

SOLD

INVESTMENT – TENANTED APARTMENT IN FANNIE BAY

Unit on Level 1

Perfectly positioned within the prestigious seaside suburb of Fannie Bay, this beautifully appointed one-bedroom apartment is a smart addition to any investment portfolio. Situated in the sought-after Akoya complex, it offers a winning combination of reliable rental income and resort-style amenities including a sparkling pool, gym, and lush communal gardens.

Currently tenanted, the apartment presents a bright, modern interior with a low-maintenance layout. A quality kitchen overlooks the open-plan living area, which flows onto a leafy entertainer's balcony. The spacious bedroom also opens to the balcony and features built-in robes, with a Jack-and-Jill bathroom for added convenience. Secure parking, split-system air conditioning, and a separate laundry complete the package, all within easy reach of East Point Reserve, Coolspot Café, and more.

Property Highlights:

- Pet-friendly complex (upon written approval)
- Spacious bedroom with built-in robe and balcony access
- Open-plan living extends to private entertainer's balcony
- Modern kitchen with stone benchtops
- Jack-and-Jill bathroom with walk-in shower
- Separate laundry and split-system air conditioning
- Secure undercover parking for one vehicle
- Resort-style facilities: pool, gym, BBQ area, tropical gardens
- Pets: Subject to approval from the body corporate.

This is an exceptional opportunity to secure a low-maintenance, high-appeal investment in one of Darwin's most desirable suburbs. Get in touch today to request the information pack or arrange a private viewing.

Additional Information:

- Year Built: 2016
- Status: Tenanted – ideal for investors seeking immediate rental income

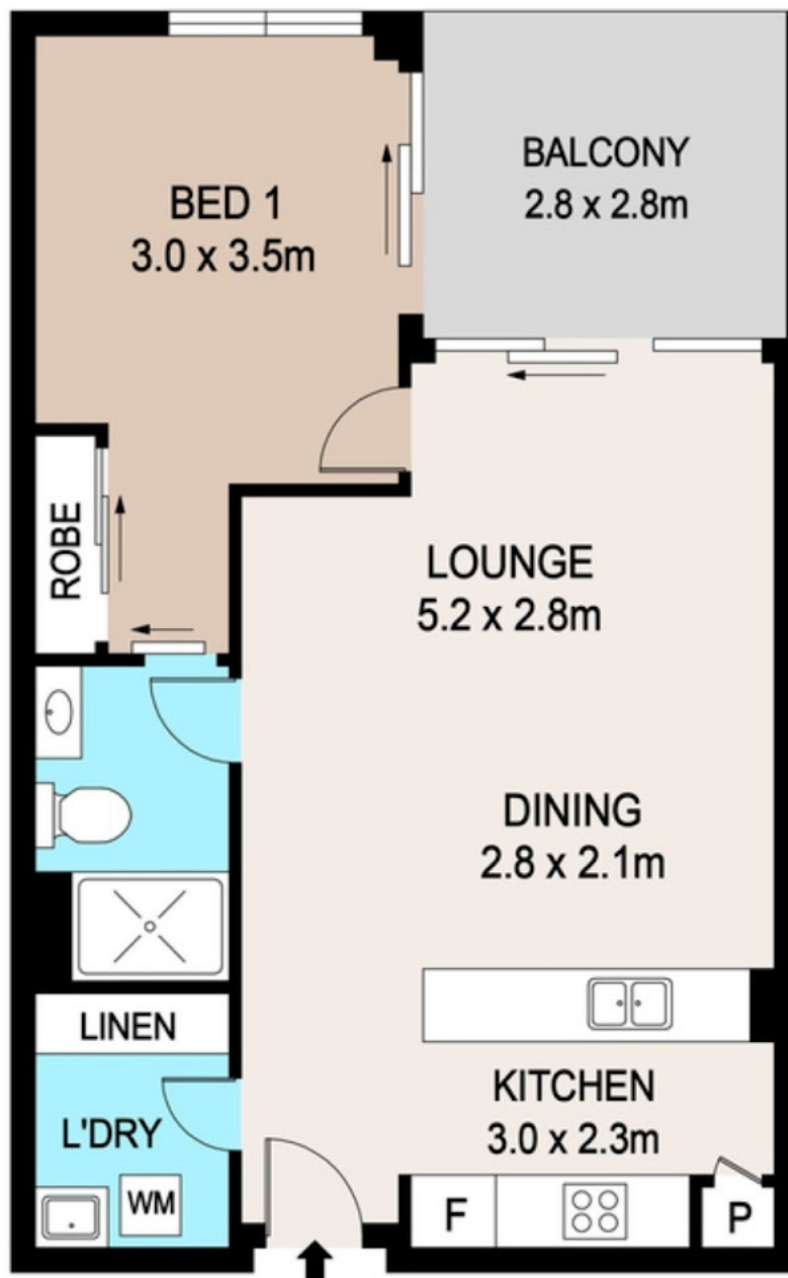
1 BED | 1 BATH | 1 CAR

PRICE:
\$370,000

OPEN FOR INSPECTION:
N/A



Nicole Wheeler
0417508800
nicolewheeler@atrealty.com.au
www.atrealty.com.au



5103/4 KURRINGAL COURT, FANNIE BAY, NT, 0820

Disclaimer: Please note this floor plan is for marketing purposes and is to be used as a guide only. All dimensions are estimates only and may not be exact measurements.