

FOR SALE

SPACIOUS 2-BEDROOM APARTMENT WITH UNMATCHED VIEWS OF THE RACECOURSE & RIVER!

Step into one of the largest floorplans in the complex with the highest quality fixtures and fittings —an 83sqm contemporary apartment that captures sweeping views of the iconic Flemington Racecourse and Maribyrnong River.

Located in the sought-after Tower 5, Victoria Square development, this light-filled residence offers a seamless blend of comfort, style, and lifestyle-enhancing amenities.

Apartment Features:

- Generous open-plan living and dining area with floating floors and split-system heating/cooling
- Modern kitchen with gas cooking, oven, dishwasher, overhead storage, and an inbuilt fridge
- European-style laundry with washer/dryer combo included
- Master bedroom with built-in mirrored robes, built-in desk/dressing table, and breathtaking racecourse and river views
- Stylish ensuite attached to the master bedroom
- Second bedroom with built-in robes and easy access to the central bathroom
- Secure car space and private storage cage included
- Entry via Joseph Street
- Easy access to public transport and Footscray train station
- Close proximity to the new Footscray Hospital

Exclusive Resident Amenities:

- Indoor heated pool with panoramic city views
- State-of-the-art gym and wellness facilities
- Private cinema
- Sky garden spanning 2,400sqm of lush green space
- Library and dining room
- Australia's only Olympic-sized aerial running track encircling the podium—exclusive to residents

2 BED | 2 BATH | 1 CAR

PRICE:

\$545,000 - \$580,000

OPEN FOR INSPECTION:

Apr 4 at 1:15pm - 1:45pm

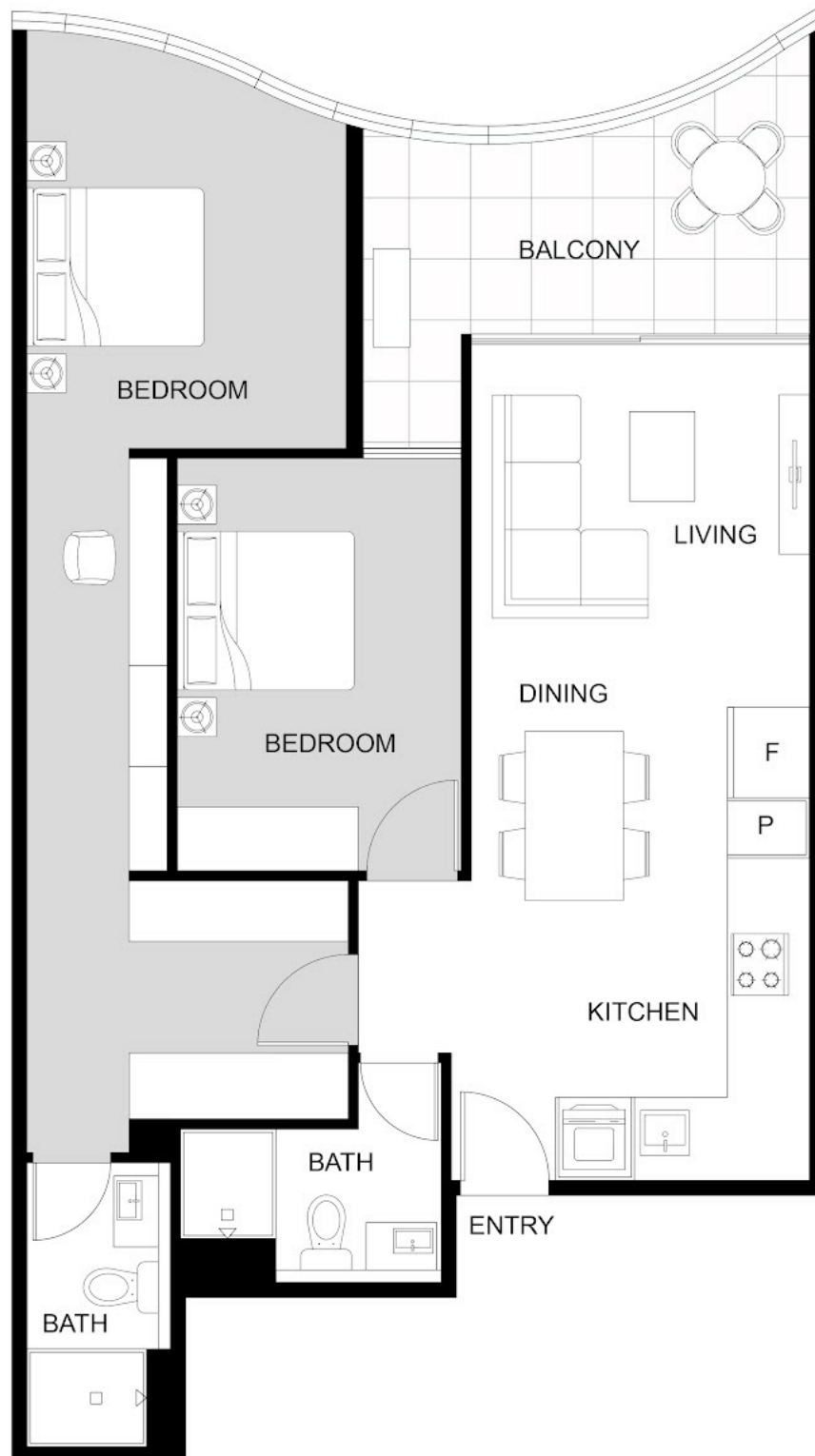


Joseph Hanna

0423966320

joseph@atrealty.com.au

www.atrealty.com.au



Disclaimer: Please note this floor plan is for marketing purposes and is to be used as a guide only. All dimensions are estimates only and may not be exact measurements.

This floor plan including furniture, fixture measurements and dimensions are approximate and for illustrative purposes only.
@Realty gives no guarantee, warranty or representation as to the accuracy and layout.
All enquiries must be directed to the agent, vendor or party representing this floor plan.