

15 WARRINA STREET, GEEBUNG, QLD, 4034



**SOLD**

## INVEST IN THE HEART OF GEEBUNG!

This property presents an exciting opportunity for those looking to create their dream home in a sought-after location. With an open-plan living, dining, and kitchen space, the current layout offers a solid foundation for a complete renovation. The home features a master bedroom and two additional bedrooms, providing a versatile canvas to reimagine the space as you see fit.

The family bathroom and separate toilet are functional but ready for an upgrade, allowing you to design your ideal space. The internal laundry offers practicality, while the spacious backyard and patio area provide ample room for expansion or outdoor living, perfect for a new build.

Situated on a generous 633m<sup>2</sup> block with a single carport, this property is perfect for those looking to knock down and rebuild. With endless potential and the opportunity to create a custom home tailored to your needs, this is a rare find in a prime location. Don't miss your chance to transform this property into the home of your dreams.

Land: 633m<sup>2</sup>

### House Features:

- Open-plan living, dining, and kitchen
- Master bedroom
- 2 additional bedrooms
- Family bathroom
- Separate toilet
- Internal laundry
- Spacious backyard
- Patio area
- Single Carport

### Location (approx. travel times):

- Walking distance to Geebung Train Station
- Walking distance to Geebung RSL
- Walking distance to Geebung State School
- Walking distance to C&K Childcare
- Walking distance to Parklands
- 5 mins to Westfields Chermanside

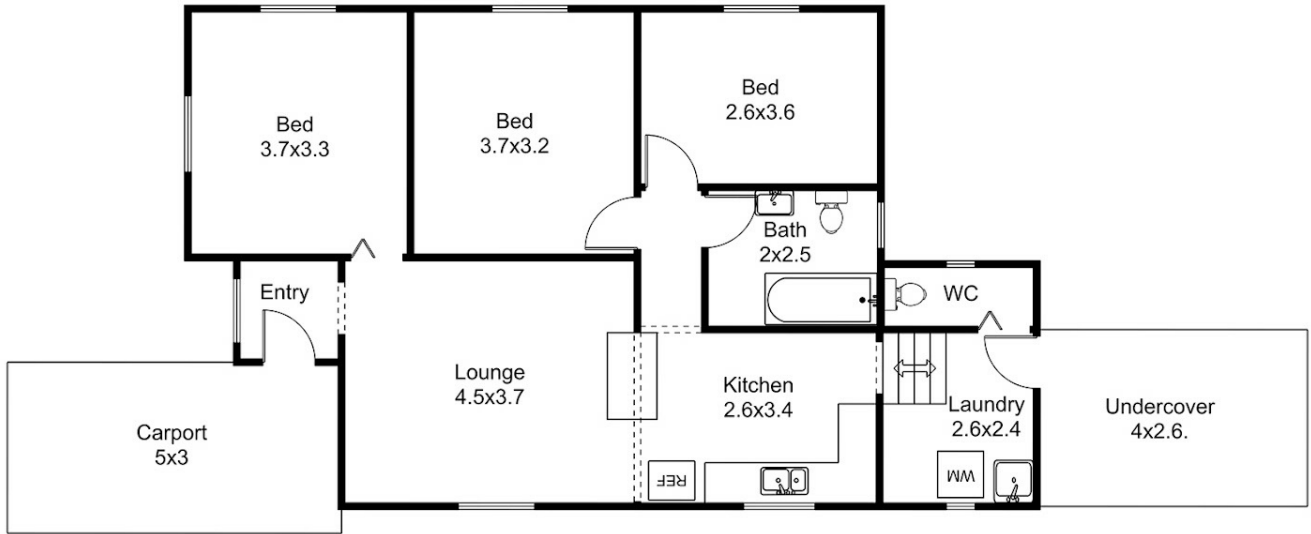
**3 BED | 1 BATH | 1 CAR**

**PRICE:**  
**\$850,000**

**OPEN FOR INSPECTION:**  
**N/A**



**Mitchell Younger**  
**0488458887**  
mitchell.younger@atrealty.com.au  
[www.atrealty.com.au](http://www.atrealty.com.au)



Floor plan, measurements and dimensions are approximate and are for illustrative purposes only.  
 Pixmo Productions gives no guarantee, warranty or representation as to the accuracy and completeness of the floor plan.

**FLOOR PLAN:**  
 15 WARRINA STREET - GEEBUNG

Disclaimer: Please note this floor plan is for marketing purposes and is to be used as a guide only. All dimensions are estimates only and may not be exact measurements.