

## FOR LEASE

### MODERN COMFORT IN A TRANQUIL SETTING

This beautifully presented single-level brick home combines comfort, style, and low-maintenance living in a peaceful village-style community. A light-filled lounge and dining area flows seamlessly to a modern kitchen with quality appliances and a private courtyard.

The master bedroom features a walk-in robe and direct access to the central bathroom, while the second bedroom offers a built-in robe and generous space. The spotless bathroom includes both a separate shower and bath, with an additional separate toilet for convenience. Year-round comfort is ensured with gas ducted heating and wall-mounted air-conditioning, while plush carpets and sleek laminate floors enhance the home's appeal. A single lock-up garage with off-street parking and an oversized laundry with courtyard access add practicality.

This property is available for a 12-month fixed-term lease and is ideal for long-term tenants. Ideally located within walking distance to Wattleview Primary, Tim Neville Arboretum, and scenic Blind Creek walking trails, with shopping, dining, and EastLink all close by. Lifestyle, comfort, and convenience come together in this exceptional home.

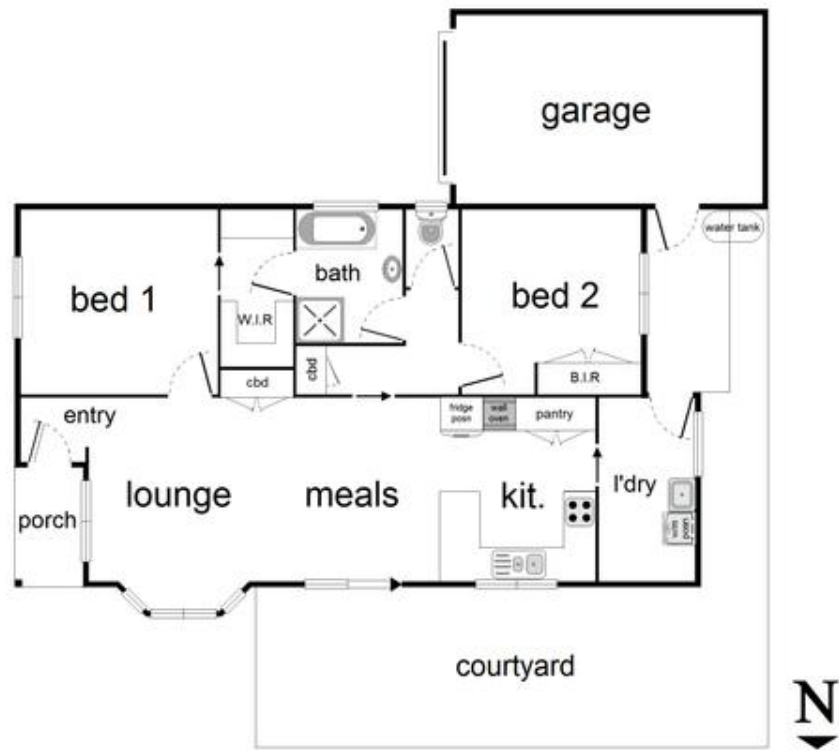
2 BED | 1 BATH | 1 CAR

**PRICE:**  
\$520 per week

**OPEN FOR INSPECTION:**  
N/A



**Bruce Ung**  
**0422353767**  
bruceung@atrealty.com.au  
[www.atrealty.com.au](http://www.atrealty.com.au)



2/31 Edina Road, Ferntree Gully

Disclaimer: Please note this floor plan is for marketing purposes and is to be used as a guide only. All dimensions are estimates only and may not be exact measurements.