

FOR SALE

113 MULLIGAN DRIVE, WATERVIEW HEIGHTS, NSW, 2460

3  | 2  | 4 



YOUR HARMONIOUS HIDEAWAY

PRICE: \$745,000 - \$765,000

Imagine waking up of a morning, only to the sound of birds. Stepping out with a warm beverage and looking out to your very own sanctuary. A small dam, the rear tree-lined boundary and bright green lawns. In the rainy season, there is a small natural watercourse that takes the run-off from the dam proving a rainforest atmosphere. At the end of the workday, the high vibe setting has you instantly relaxing before you even get out of the car. Here you unplug from the stress of the day and plug into what matters.

Your allotment comes in at approximately 7098m² including your own driveway from the street. At the conclusion of the driveway is a good-sized double shed with a carport perfect for the vehicles and toys, and there's a handy turning bay and space for visitors to park.

Look out summer! The pool in its own private setting is ready and waiting for afternoon splashes and moonlit dips. Alongside the pool is a massive undercover entertainment area, or if entertaining isn't your thing; throw in a day bed and make it your sanctuary. Again, it's super private with an outlook usually reserved for luxury destinations only.

Low-set brick and tile living couldn't be easier here. Three bedrooms plus a study has the couple or smaller family totally catered for. The living and dining space is super spacious and whilst you may not need it in the coming months, the wood fire heater makes this space toasty. The kitchen is a clear winner with fresh white cabinetry and stone benchtops, and the air-conditioned dining space very generous. Plantation shutters elevate the entire home.

OPEN FOR INSPECTION:
N/A



Kylie Swift // 0488 161 621

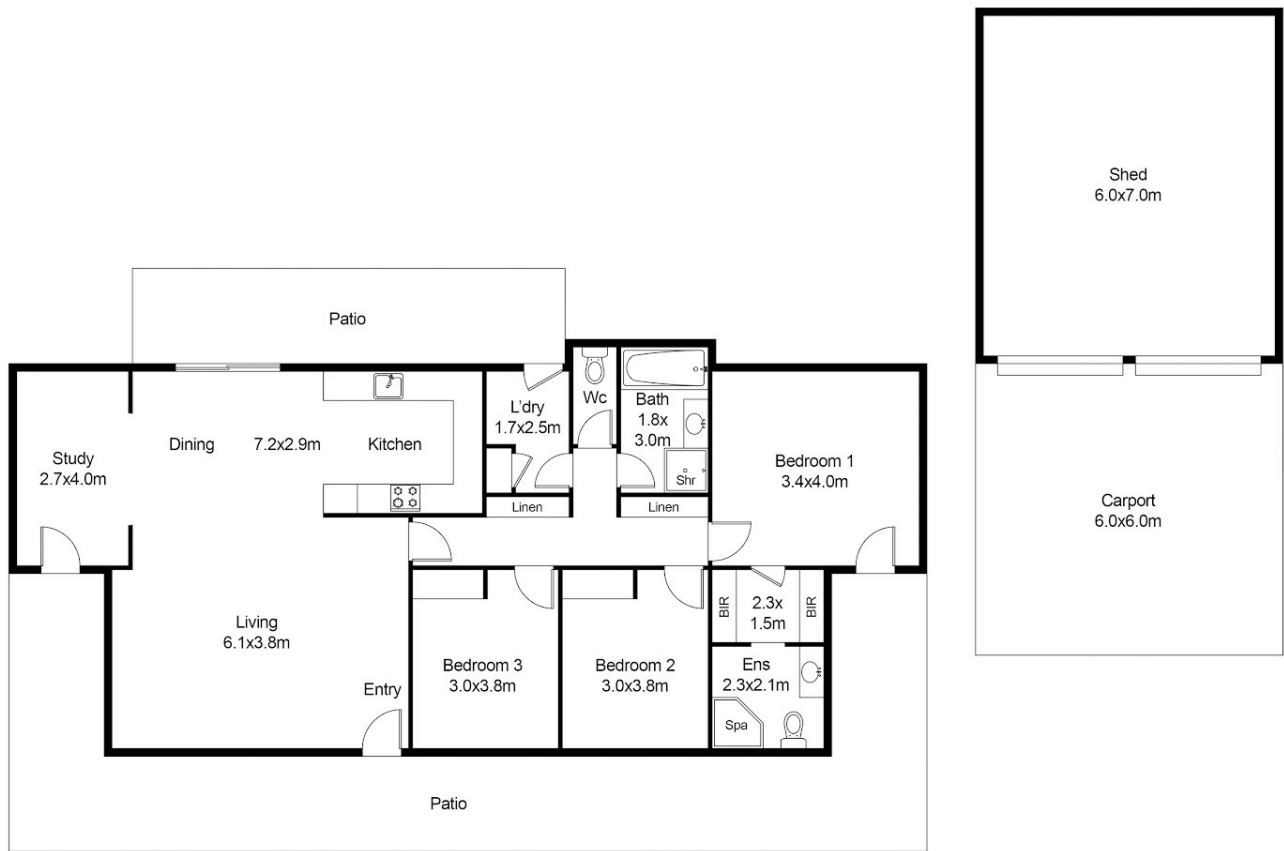
kylie@virtueproperty.com.au // www.virtueproperty.com.au



FOR SALE

113 MULLIGAN DRIVE, WATERVIEW HEIGHTS, NSW, 2460

3  | 2  | 4 



113 Mulligan Drive, Waterview Heights, NSW

Whilst every attempt has been made to ensure the accuracy of the floor plan contained here, measurements of doors, windows, rooms and any other items are approximate and no responsibility is taken for any error, omission, or mis-statement. This plan is for illustrative purposes only and should be used as such by any prospective buyer.

Kylie Swift // 0488 161 621

kylie@virtueproperty.com.au // www.virtueproperty.com.au

