



**SOLD**

## NOTHING TO BE DONE JUST MOVE IN.

Nestled in the heart of Queensland's stunning Wide Bay-Burnett region, this impeccably presented 4-bedroom, 2-bathroom family home at 91 Fyshburn Drive offers the perfect blend of coastal living and modern convenience. Set on a generous 932 square metre block in the peaceful community of Cooloola Cove, this property presents an exceptional opportunity for families seeking space, comfort, and a relaxed lifestyle just two and a half hours north of Brisbane.

This well-appointed home features four spacious bedrooms including a master suite with ensuite bathroom, providing excellent accommodation for growing families. The design incorporates two full bathrooms ensuring convenience for busy households, while the shed offers secure parking and abundant storage. The shed is sizeable 12mx8m with a covered area of 2.4 m wide and the length of the shed. There is an additional toilet facility in this space. There is potential to make it into a state of the art workshop, or even a "man shed". There possibilities are endless.

The property's sizeable block provides endless potential for outdoor living and recreation. Whether you're dreaming of establishing an outdoor entertaining area, or perhaps installing a pool, or simply enjoying the space for children and pets to play, this block delivers the room to make your vision a reality.

This peaceful locality is perfectly positioned for those who appreciate the tranquility of coastal living while maintaining convenient access to essential services and recreational opportunities.

- Close to Tin Can Bay for primary and secondary schooling to Year 10
- Easy access to Gympie for complete secondary education and city amenities
- Peaceful residential streets ideal for families

The location provides excellent connectivity with Gympie just 52 kilometres away, offering access to comprehensive shopping, dining, and educational facilities.

This property represents an outstanding opportunity to secure a substantial family home in one of Queensland's most appealing coastal communities.

If you would like more information, or to organise a private viewing, please contact Harvey on 0416 072 985.

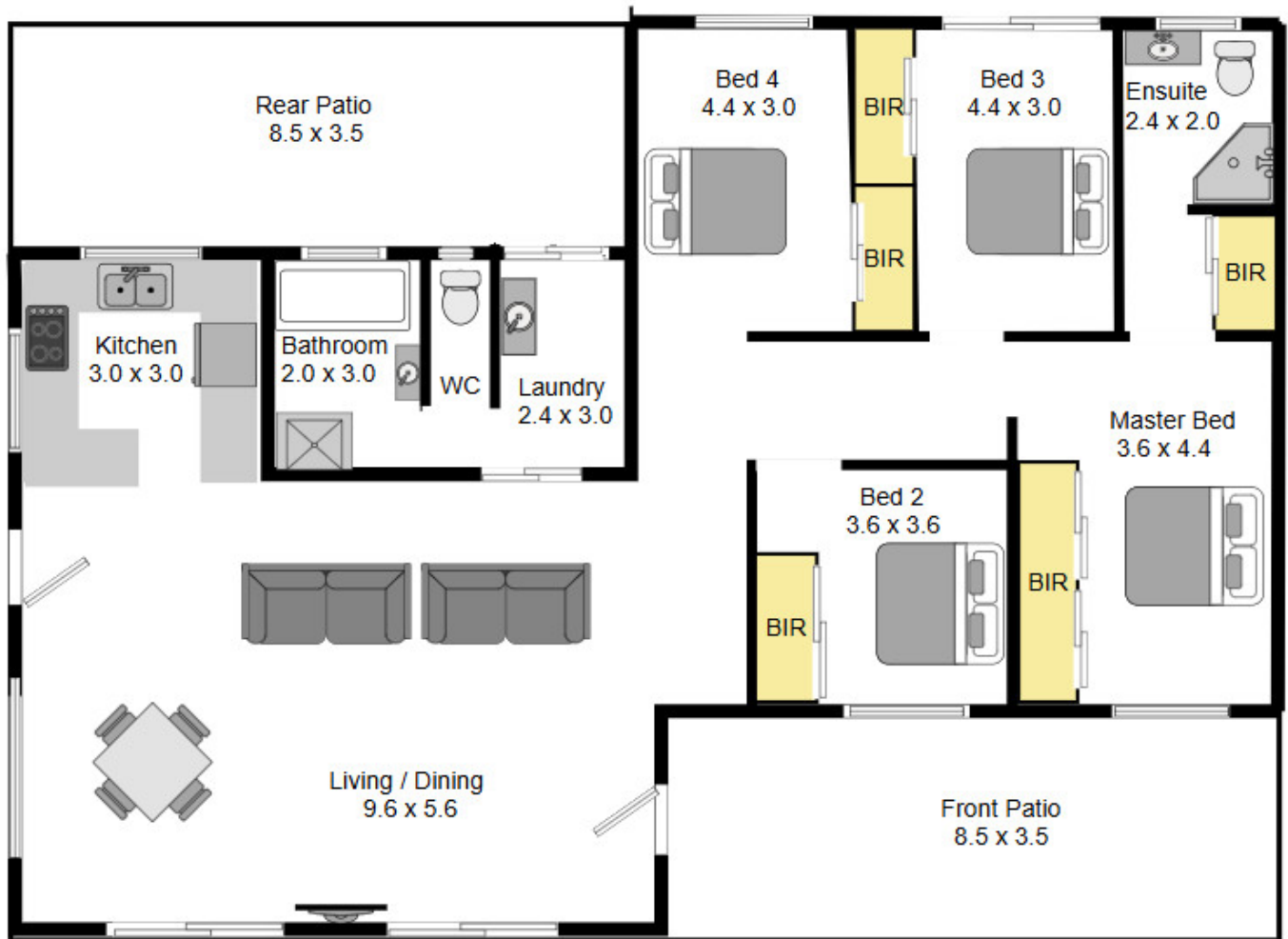
**4 BED | 2 BATH | 3 CAR**

**PRICE:**  
**\$737,000**

**OPEN FOR INSPECTION:**  
**N/A**



**Harvey Escribano**  
**0416072985**  
harvey@atrealty.com.au  
[www.atrealty.com.au](http://www.atrealty.com.au)



**Floor Plan 91 Fyshburn Drive, Cooloola Cove, QLD**

*(Please note drawing is approximate and not to scale)*

Disclaimer: Please note this floor plan is for marketing purposes and is to be used as a guide only. All dimensions are estimates only and may not be exact measurements.