



# FOR SALE

## PRESTIGIOUS FAMILY HOME WITH SPA RETREAT

Positioned in the highly sought-after Grove Estate, this well-presented home offers an excellent opportunity for families, first-home buyers or investors seeking comfort, convenience and a modern lifestyle.

Step inside to a light-filled interior that blends style and functionality. The open-plan design creates a welcoming flow from the kitchen through to the dining and living areas, making it an ideal space for both everyday living and entertaining. Quality finishes and thoughtful touches can be found throughout, delivering a home that is ready to enjoy from day one.

Bedrooms are generously proportioned, with the main suite providing a private retreat. The central bathroom and well-planned layout offer a great balance of privacy and practicality for all household members.

Outside, the property continues to impress with an undercover entertainment area and a spa with massage jets, creating the perfect setting for year-round enjoyment. This impressive entertainment room extension has been thoughtfully future-proofed, offering the versatility to easily install a second kitchen or a third shower to suit your evolving needs. Whether it's hosting gatherings, relaxing on weekends or simply enjoying the outdoors, this home is designed to suit a variety of lifestyles.

Situated close to Davis Creek Primary School, The Grange P-12 College, Riverdale Village Shopping Centre, Tarneit Central, public transport and local parks, the location offers everyday convenience in a vibrant, family-friendly community.

Additional features add comfort, security and energy efficiency, enhancing the overall appeal of the property.

This is a move-in-ready home in a location that truly has it all. Contact us today to arrange your inspection.

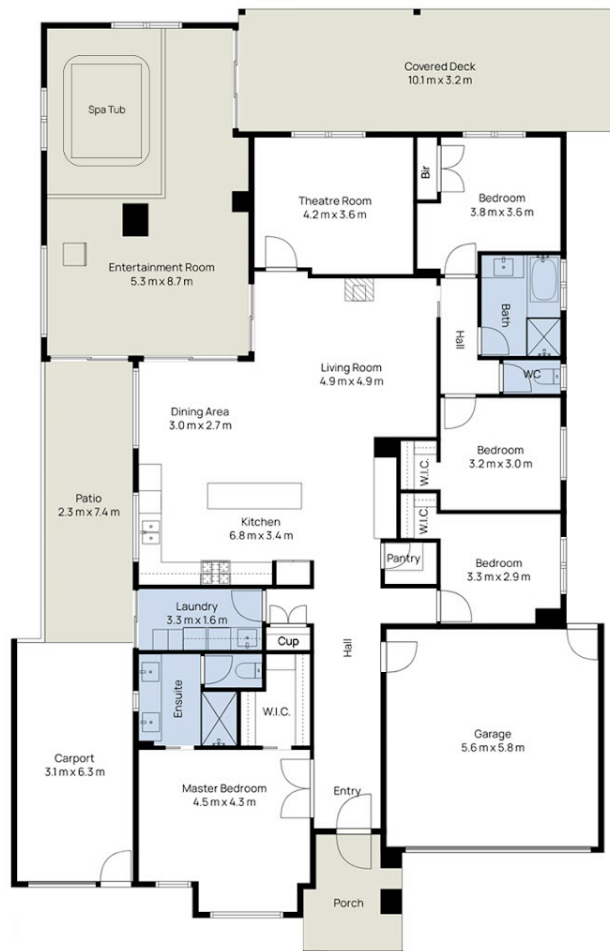
5 BED | 2 BATH | 2 CAR

PRICE:  
Contact Agent

OPEN FOR INSPECTION:  
N/A



**Samuel Hogan**  
**0401315234**  
samuel@atrealty.com.au  
[www.atrealty.com.au](http://www.atrealty.com.au)



## 16 Cuttlefish Cct, Tarneit

Whilst every attempt has been made to ensure the accuracy of the floor plan contained here, measurements of doors, windows, rooms and any other items are approximate and no responsibility is taken for any error, omission, or mis-statement. This plan is for illustrative purposes only and should be used as such by any prospective purchaser. The services, systems and appliances shown have not been tested and no guarantee as to their operability or efficiency can be given.



Disclaimer: Please note this floor plan is for marketing purposes and is to be used as a guide only. All dimensions are estimates only and may not be exact measurements.