



FOR SALE

BRAND-NEW, TITLED, AND READY TO MOVE IN

This completed and titled townhouse offers a rare opportunity to move into brand-new living in Tawa now. Designed with modern lifestyles in mind, it stands out from other townhouses in the area through its generous proportions, thoughtful features, and readiness for immediate possession.

Inside, the open-plan living area is enhanced by an impressive 2.7m stud height, creating a sense of space that is rarely found in townhouse living. The contemporary kitchen is finished with stone benchtops, high-quality appliances and modern cabinetry, flowing effortlessly to a generous north-west facing deck that captures excellent afternoon sun. Comfort is prioritised throughout, with full insulation, double glazing, and heat pumps in the living area as well as each bedroom — a level of heating not commonly offered in other townhouses.

Why This Home Stands Out

- *Completed and fully titled, ready for immediate possession
- *Elevated 2.7m stud height in the main living area
- *Two-bedroom layouts with smart, functional design
- *North-west facing outdoor living with excellent sun and privacy
- *Modern kitchen with stone benchtops and quality finishes
- *Double glazing and full insulation throughout
- *Heat pump in the living area plus one in each bedroom
- *Dedicated car pad with power ready for EV charger installation
- *Private yet convenient setting close to transport and amenities

Located just moments from the supermarket, Redwood Train Station, and with easy motorway access, daily commuting is simple and efficient. Combined with brand-new condition, immediate availability, and features rarely found in comparable townhouses, this home presents a compelling opportunity in a growing Tawa market.

Homes of this quality and location are always in demand. Act quickly to secure yours.

Get in touch to arrange a private viewing, or come see us at one of our open homes. We'd love to show you around.

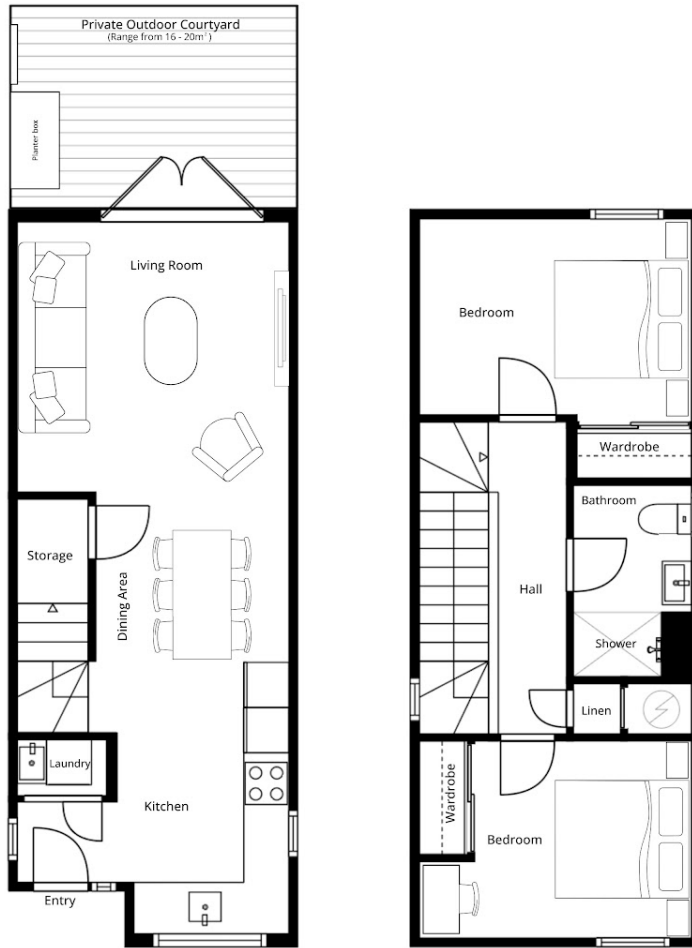
2 BED | 1 BATH | 0 CAR

PRICE:
Price by Negotiation

OPEN FOR INSPECTION:
N/A



Maria Riediger
0211637852
maria@luxerealty.co.nz
www.luxerealty.co.nz



2 Bedroom
approximately 78 sqm

4 William Earp Place
Tawa



Disclaimer: Please note this floor plan is for marketing purposes and is to be used as a guide only. All dimensions are estimates only and may not be exact measurements.