



**SOLD**

## PRIME LOCATION

Price Guide: From \$890,000

This privately positioned and secure home is superbly located.

Wide double doors provide a welcome entrance into a sunlit open plan layout. This thoughtfully designed double brick home maximises space, light and comfort. Opposite the Maylands Primary School with a friendly neighborhood.

One of three located at the rear of the block. Built in 2011 by Gemmil Homes on a 270sqm survey strata block with NO strata fees.

Filled with natural light and featuring 3 bedrooms, 2 bathrooms, walk in and built in wardrobes, ducted reverse cycle air-conditioning, alarm, window locks, solar panels, (for energy efficient-living) an enclosed extra living area, underground power, double remote garage and an additional carport for that extra parking.

The sunny enclosed extra living space has bi folding doors that open out onto a private leafy green courtyard, with a tranquil outlook, perfect for alfresco dining.

This is a low maintenance, easy care, lock up and leave home, ideal for the professional, downsizer, young family or investor.

Located in the most desirable riverside suburb.

With easy access to public transport, bus and train, airport, (metro train link) shopping precincts, cafes / restaurants, walking and cycle paths, parklands, the beautiful De Lacy Reserve, (for the dog lovers) the CBD, Maylands yacht club, and the Swan River.

This is a must-see property. For private inspections please phone Deborah on 0417919435

Please note: This property is currently vacant and has been digitally staged with virtual furniture. The information provided is as a guide only.

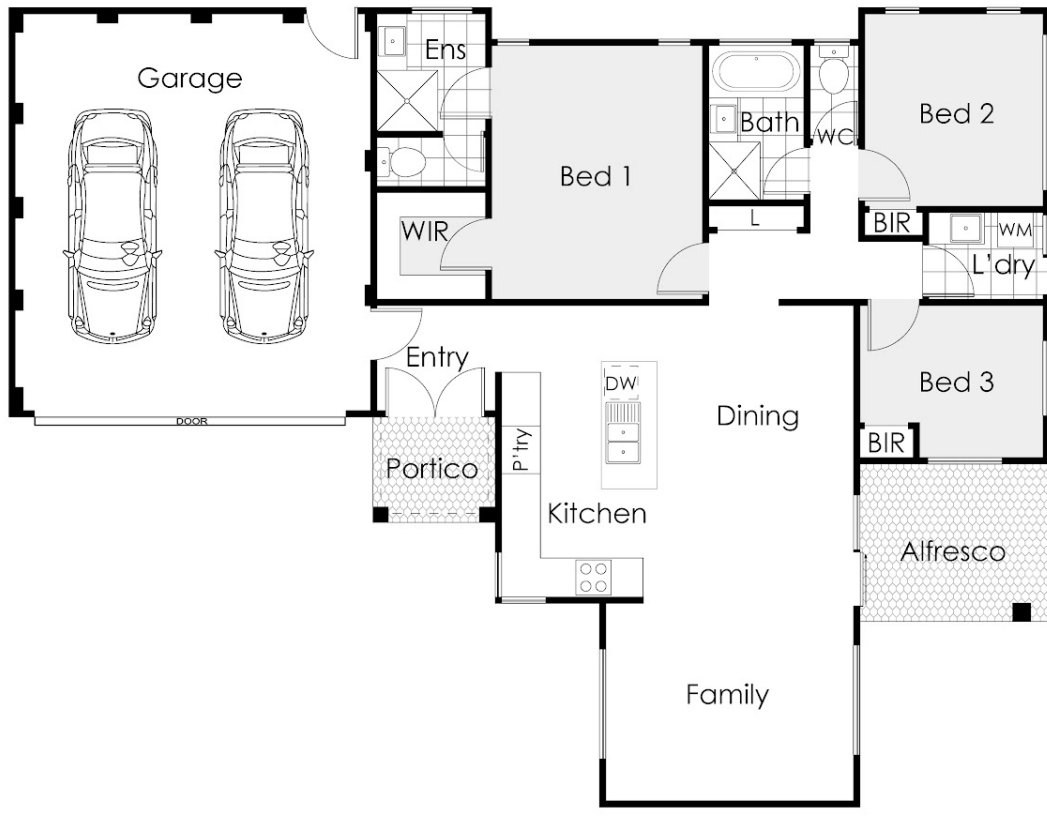
**3 BED | 1 BATH | 4 CAR**

**PRICE:**  
**\$950,000**

**OPEN FOR INSPECTION:**  
**N/A**



**Deborah Best**  
**0417919435**  
debbest@atrealty.com.au  
[www.atrealty.com.au](http://www.atrealty.com.au)



## 67c Kelvin Street, Maylands

This floor plan is not to scale.  
 Dimensions are approximate and therefore should only be used for illustrative purposes.

	134 m <sup>2</sup>
	3 Bed
	2 Bath
	2 Car

Disclaimer: Please note this floor plan is for marketing purposes and is to be used as a guide only. All dimensions are estimates only and may not be exact measurements.