



SOLD

QUALITY HOME IN DREAM LOCATION

Welcome to 14 Honeyeater Way, a beautifully designed family home nestled in one of Coffs Harbour's most sought-after neighbourhoods. Positioned on a generous 712m² block, this quality single-level residence offers a perfect balance of comfort, functionality and lifestyle, making it ideal for growing families or those looking to enjoy a relaxed coastal lifestyle.

As you step inside, you're greeted by an open and inviting layout that flows seamlessly from room to room. The home features four spacious bedrooms, all with built-in wardrobes, while the master suite offers a private retreat complete with its own ensuite and walk-in robe. The heart of the home is the expansive open-plan family and dining area, which effortlessly connects to a large undercover alfresco space – perfect for year-round entertaining or quiet family dinners in the fresh air. A separate formal lounge provides a second living area, ideal for relaxation or movie nights, and is complemented by reverse-cycle air conditioning for year-round comfort.

The kitchen is well-appointed and centrally located, designed for both everyday practicality and hosting with ease. Throughout the home, the thoughtful layout maximises natural light and offers a sense of privacy while still maintaining an open, connected feel. Outdoors, the level backyard is perfect for kids, pets, or simply enjoying the peaceful surrounds, with direct access to nearby reserve land and the scenic Coffs Creek cycleway – a dream for nature lovers and active families alike.

Situated in a quiet, established street, this property combines a sense of community with exceptional convenience. You're only minutes away from local schools, shopping centres, Jetty precinct, parks, and beaches, all while enjoying the tranquility of a leafy, family-friendly setting. Whether you're upsizing, relocating or simply searching for a quality home in a premium location, 14 Honeyeater Way offers a rare opportunity to secure a lifestyle of comfort and ease in beautiful Coffs Harbour.

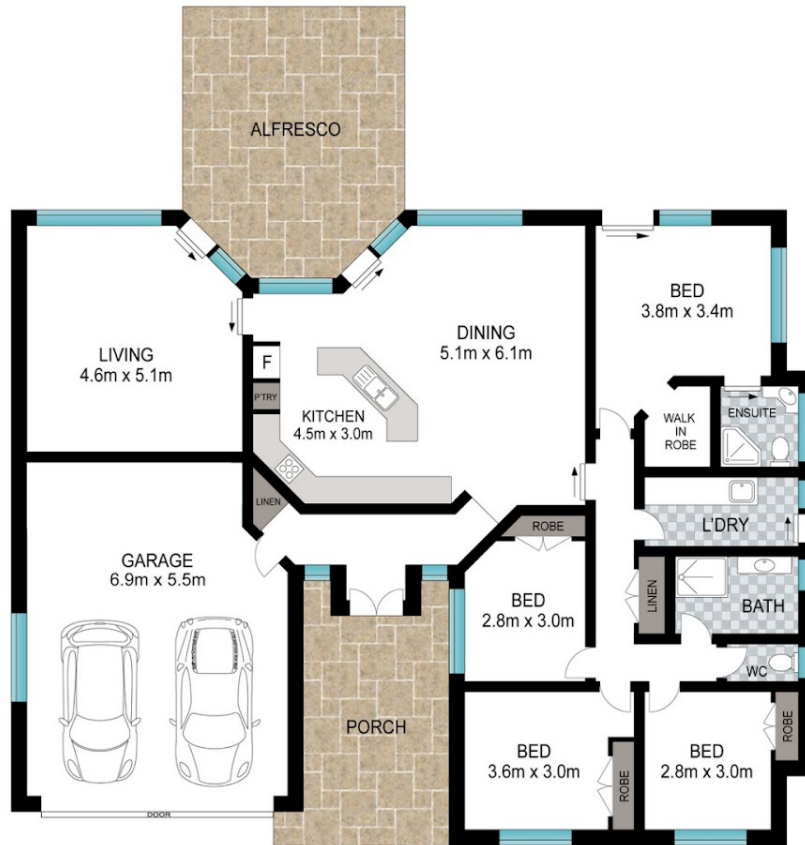
4 BED | 2 BATH | 2 CAR

PRICE:
\$1,100,000

OPEN FOR INSPECTION:
N/A



Bryce Heward
0423691322
bryce.heward@atrealty.com.au
www.atrealty.com.au



Scale in metres. Indicative only. Dimensions are approximate. All information contained herein is gathered from sources we believe to be reliable. However, we cannot guarantee its accuracy and interested persons should rely on their own enquiries.

INT: 204 m²
EXT: 40 m²

14 Honeyeater way, Coffs Harbour



Disclaimer: Please note this floor plan is for marketing purposes and is to be used as a guide only. All dimensions are estimates only and may not be exact measurements.

Bryce Heward
0423691322
bryce.heward@atrealty.com.au
www.atrealty.com.au

