

SOLD

MODERN TERRACE HOME IN THE HEART OF ROBINA

This modern terrace home exemplifies an executive lifestyle, with quality finishes throughout and offering an enviable location that is hard to beat! Upon entering, you'll find a stylish kitchen with stone benchtops and an island bench that doubles as a breakfast bar, flowing into an open-plan, tiled living and dining area that opens up to a private courtyard. The lower level features a powder room and separate laundry. The upper level includes a generous second bedroom, main bathroom, and a master suite complete with balcony access, a large walk-in robe, and an elegant ensuite.

THE PROPERTY FEATURES:

- Master bedroom with ensuite, walk in robe and balcony access
- Second bedroom with double built in robe
- Powder room and laundry on the lower level
- Open plan living and dining area leading to private courtyard
- Modern kitchen with dishwasher, island bench and quality appliances
- Air-conditioning and ceiling fans living and bedrooms
- Rainwater tank with pump servicing toilets and laundry
- New rainwater pump and bathroom exhaust fans
- Natural gas HWS
- Abundance storage space
- Move in ready
- Fully fenced property
- Internal access remote single lock-up garage
- Body Corporate Levies about \$34 per week including building insurance
- Prime location close to all amenities

CLOSE BY:

- Robina Town Centre - 600m
- Robina Hospital - 1.7km
- Robina State High School - 1.8km
- Cbus Super Stadium – 2.0km
- Robina train Station - 2.2 km
- The Glades Golf Course - 3.3 km

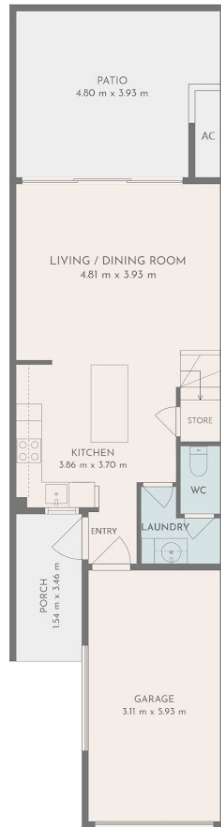
2 BED | 2 BATH | 1 CAR

PRICE:
\$845,000

OPEN FOR INSPECTION:
N/A



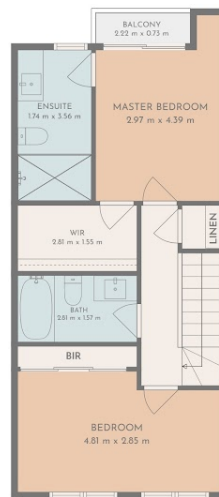
Mark Gac
0412765577
mmgac@atrealty.com.au
www.atrealty.com.au



Ground Floor

TOTAL: 146m²

MEASUREMENTS DEEMED HIGHLY RELIABLE BUT NOT GUARANTEED.



First Floor



Disclaimer: Please note this floor plan is for marketing purposes and is to be used as a guide only. All dimensions are estimates only and may not be exact measurements.

