



SOLD

CHARMING 2BR HOME ON A GENEROUS SIZE CORNER BLOCK

Disclaimer - Please note some internal images have digitally staged furnishings. Nestled on a generous 620 (approximate) square meter corner block in the heart of Charlestown, this charming 2-bedroom house at 6A Elizabeth Parade presents an exceptional opportunity for those seeking comfort and convenience in one of Lake Macquarie's most established suburbs. Whether you're a first-time buyer, downsizer, a savvy investor or looking for a duplex development project, this well-positioned property offers the perfect blend of opportunity and suburban tranquility.

Step inside to discover thoughtfully designed interiors featuring split level living, a large lounge room and a large dining and kitchen area, a second loo downstairs, and a large main bedroom with built-in wardrobes that maximise storage and space efficiency. The home is equipped with reverse cycle air conditioning ensuring year-round comfort, while an integrated alarm system provides peace of mind and security for you and your family. Each room has been carefully planned to make the most of the available space, creating a warm and welcoming atmosphere throughout.

The outdoor appeal is equally impressive, with a delightful balcony perfect for morning coffee or evening relaxation. The substantial land size of 620 square meters provides ample space for:

- Gardening enthusiasts to create their own backyard oasis
- Children and pets to play safely
- Future extensions or improvements (subject to council approval)
- Entertaining family and friends in a private setting

Charlestown's reputation as the largest suburb in Lake Macquarie speaks volumes about its desirability and established community feel. Located approximately 10 kilometers from Newcastle's CBD, residents enjoy the perfect balance of suburban serenity with urban accessibility. The area's rich mining heritage adds character and depth to this well-established neighborhood.

The suburb's commercial heart revolves around the Pacific Highway, where you'll find the impressive Charlestown Square shopping center offering everything from major department stores to specialty retailers. For additional convenience, Hilltop Plaza and The Forum Centre

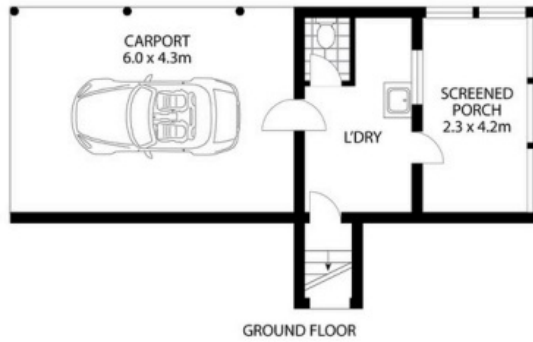
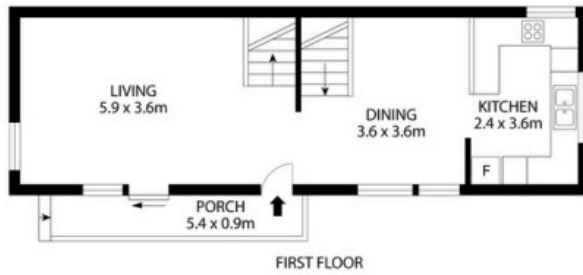
2 BED | 1 BATH | 1 CAR

PRICE:
\$930,000

OPEN FOR INSPECTION:
N/A



Anthony Castelli
0414514140
anthonycastelli@atrealty.com.au
www.atrealty.com.au



Internal Area Approx. : 103m²
External Area Approx. : 54m²

Floor and site plans are provided for marketing purposes only. Measurements are approximate and not to scale. Interested persons should rely on their own enquires.

Disclaimer: Please note this floor plan is for marketing purposes and is to be used as a guide only. All dimensions are estimates only and may not be exact measurements.