



SOLD

FAMILY READY IN TIMBERTOWN ESTATE

- * Tidy brick veneer home, with 3-4 bedrooms, 2 bathrooms & internal parking for 2 cars
- * Generous side access to a stamped concrete parking pad suitable for a large caravan, boat or RV
- * North east facing undercover entertainment area with ceiling fan
- * Front formal lounge
- * 3 air conditioners, 8 fans throughout
- * Kitchen with electric cooktop, stone bench tops & dishwasher
- * Large master with ensuite & walk-in robe
- * Versatile 4th bedroom, also suitable for large office
- * Solar hot water
- * Laundry with built-in benches & plenty of storage throughout
- * Workshop shed at rear
- * Lot size of approximately 647m²
- * Lot 373/DP1193423

DISCLAIMER-This information has been provided to us by third parties, with all care taken, we do not accept any responsibility for its accuracy.

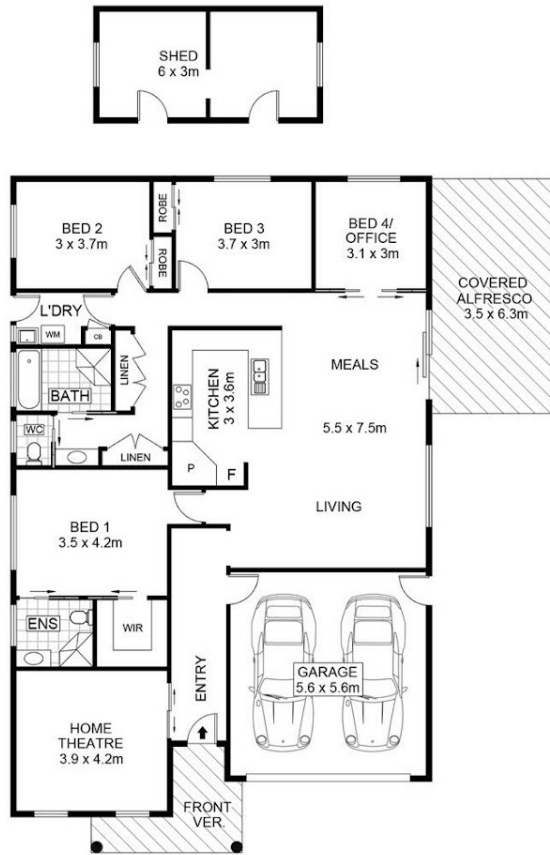
4 BED | 2 BATH | 2 CAR

PRICE:
\$895,000

OPEN FOR INSPECTION:
N/A



Chris Gill
0438866000
chris.gill@atrealty.com.au
www.atrealty.com.au



8 CARPENTER STREET, WAUCHOPE

Disclaimer: Dimensions are approximate. We have obtained all information in this document from sources we believe to be reliable; however, we cannot guarantee its accuracy. Prospective purchasers are advised to carry out their own investigations.



Internal Area : 152 sq. m.
 External Area : 30 sq. m.
 Garage Area : 31 sq. m.

Disclaimer: Please note this floor plan is for marketing purposes and is to be used as a guide only. All dimensions are estimates only and may not be exact measurements.