



SOLD

SOLID FAMILY HOME OR INVESTMENT – SANS SOUCI DRIVE, WODONGA

Positioned in the highly sought-after Sans Souci Drive, this quality-built home offers comfort, space and practicality in a location known for its strong appeal to both families and investors. With an easy-to-live-in floor plan and generous proportions throughout, it presents as a home that is as functional as it is welcoming.

- Spacious living: The home opens to a generous lounge and dining area, creating a warm and inviting space. A conveniently positioned family room and separate meals area provide additional living zones, ensuring there's room for everyone to enjoy their own space.
- Well-designed kitchen: The large kitchen is the heart of the home, complete with a breakfast bar, pantry and plenty of storage cupboards, making it perfect for everyday living and entertaining.
- Room for everyone: Three generous bedrooms all include built-in robes, with the main bedroom offering a very spacious retreat complete with ensuite. Additional hallway storage, a family bathroom, separate toilet and laundry add to the home's practicality.
- Outdoor & storage: Step outside to a pleasant covered alfresco area, surrounded by established gardens that provide privacy and shade. The secure backyard includes side access for boats, trailers or vans, a garden shed and a huge four-car garage with remote control and high clearance.

Comfort is assured year-round with reverse cycle heating and cooling, making the home suitable for Wodonga's changing seasons.

This is a property that ticks every box—space, comfort, storage and location. A brilliant choice for first home buyers looking to step into the market, families wanting room to grow, or investors seeking a solid rental return.

An excellent opportunity in one of Wodonga's most desirable streets—move straight in or secure a smart investment today.

3 BED | 2 BATH | 4 CAR

PRICE:
\$643,000

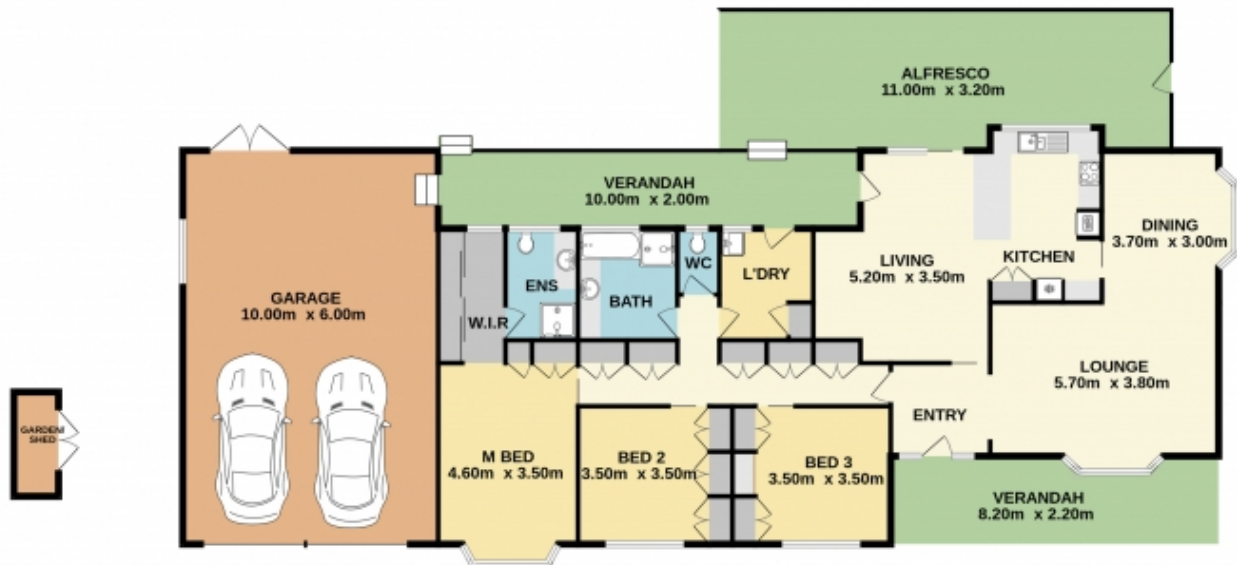
OPEN FOR INSPECTION:
N/A



George Bourdis
0412291974

george.bourdis@atrealty.com.au
www.georgebourdisrealestate.com.au

GROUND FLOOR



Measurements are approximate. Not to Scale. Illustrative purpose only.

Disclaimer: Please note this floor plan is for marketing purposes and is to be used as a guide only. All dimensions are estimates only and may not be exact measurements.