



SOLD

A HOME FOR ALL THE FAMILY.

2025 Custom built, this luxury residence at 8 Carbine Court sets a new benchmark for modern family living. Positioned on a generous 945m² block with breathtaking views of the surrounding hills and farmland, this home offers both style and space in one impressive package. Designed for comfort, flexibility, and everyday enjoyment, every detail has been thoughtfully considered — from the high-end finishes to the versatile floorplan and energy-efficient features.

Key Features:

- Four bedrooms, ensuite, large family bathroom plus powder room (main level)
- Designer kitchen with premium appliances, butler's pantry, built-in bar & large island bench
- Open-plan living and dining with gas log fireplace and seamless flow to a decked balcony
- Spacious master suite with walk-in robe and luxury ensuite
- Fully self-contained lower level with its own kitchen, bedroom, and bathroom – perfect for guests, family, or rental income
- Three-car garage with workshop and under-house storage
- Landscaped and fenced gardens with side access for a caravan or trailer
- Zoned ducted heating & refrigerated cooling for year-round comfort
- Solar panels and EV charging point for energy efficiency

This home truly delivers the best of both worlds — high-end design meets everyday practicality. Move straight into luxury living without the wait.

5 BED | 3 BATH | 3 CAR

PRICE:
\$1,300,000

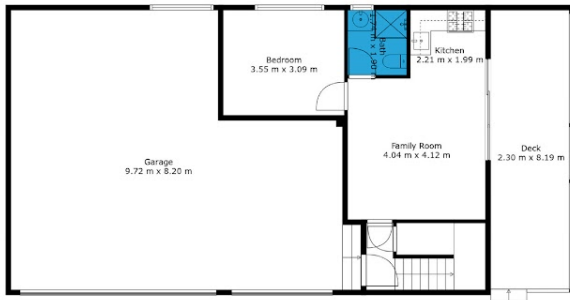
OPEN FOR INSPECTION:
N/A



Mel Ahearn
0409183763

mahearn@atrealty.com.au

atrealtypropertysalesgippsland.com.au



8 Carbine Court, Drouin

Whilst every attempt has been made to ensure the accuracy of the floorplan contained here all measurements are approximate and are for illustration purposes only. No responsibility is taken for any error, omission or misstatement



Disclaimer: Please note this floor plan is for marketing purposes and is to be used as a guide only. All dimensions are estimates only and may not be exact measurements.