



**SOLD**

## COMFORT, CONVENIENCE & POTENTIAL!

First time offered to the market in 35 years and sitting pretty in a sought-after family friendly neighbourhood, this solid 5-bedroom brick home offers an opportunity to rejuvenate and capitalise on the blue-ribbon location. Situated close to schools, shops, city buses, parks & playgrounds, and within easy access to both Macquarie & Top Ryde Shopping centres.

### Featuring:

- Versatile floorplan with large formal and informal living areas
- Updated kitchen with breakfast bar, gas cooking and dishwasher
- 5 comfortable bedrooms all with built in robes
- An enclosed sunroom with kitchenette
- 3 neat & clean bathrooms
- Light & bright family room opening onto full length balcony
- Work shed for the home handyman
- Fully fenced, level, child and pet friendly rear yard
- LAND | R2 zoned, 570sqm block with a 15.2m frontage (approx.)

With a touch of paint and some polish, this house could be transformed into the perfect family home. Featuring multiple living spaces and a spacious backyard ideal for weekend barbecues and children's play. Each corner of this house has the potential to become a sanctuary for your family. It's not just a house; it's a canvas waiting for you to create your dream home. Please call Shek Maharaj on 0406 090 409 to arrange your private inspection.

**DISCLAIMER:** Every precaution has been taken to establish accuracy of the above information but does not constitute any representation by the owner or agent. Information is gathered from sources we believe to be reliable; we cannot guarantee its accuracy and interested persons should rely on their own enquiries. All development opportunities are subject to due diligence and council approval.

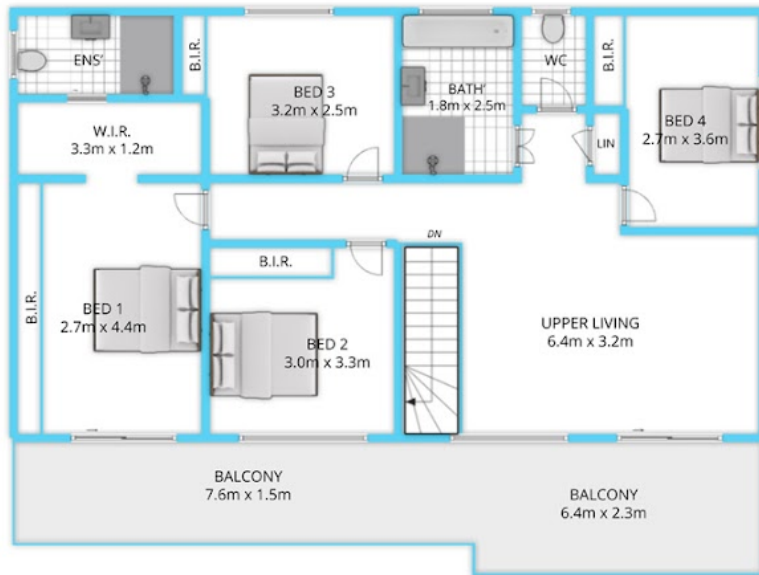
**5 BED | 3 BATH | 2 CAR**

**PRICE:**  
**\$2,850,000**

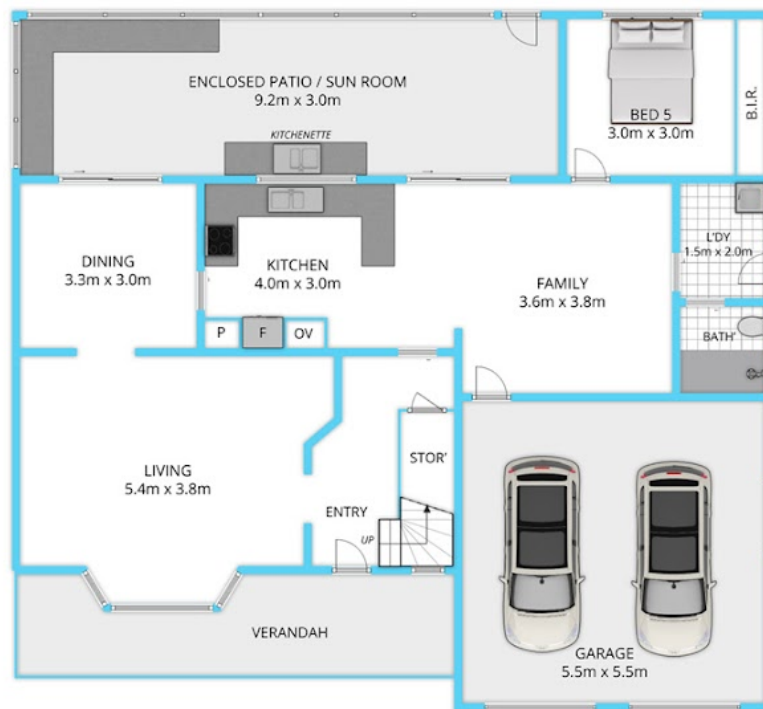
**OPEN FOR INSPECTION:**  
**N/A**



**Shek Maharaj**  
**0406090409**  
shek@atrealty.com.au  
[www.atrealty.com.au](http://www.atrealty.com.au)



Upper Level



Ground Level

Disclaimer: Please note this floor plan is for marketing purposes and is to be used as a guide only. All dimensions are estimates only and may not be exact measurements.

Disclaimer: Please note that while the information contained in this floorplan is provided by reliable sources, we cannot guarantee its accuracy. It is intended as a guide only. Interested parties should rely on their own enquiry. Drawing not to scale. Dimensions are approximate.