



FOR SALE

MAGICAL RIVER FRONTAGE & A SEPARATE DWELLING ON 4.2 FLAT ACRES

"RIVERWOOD" - 111 Colemans Farm Road, Yandina

This Homestead is a MAGICAL piece of paradise on the banks of the South Maroochy River! with STUNNING river access for swimming and fishing. There is a beautiful dam to the front of the property. There is a huge MACHINERY SHED with drive thru-access and the potential for a mezzanine floor. In addition adjacent to the Homestead is a 3 bay carport with a bathroom which makes a fabulous games room or the potential for an office/granny flat. ***Watch Our Video***

A rare 4.2 acres of FLAT EASILY MANAGED LAND which is fully fenced which is elevated from the river which means this property does not experience river flooding.

WHAT WE LOVE ABOUT THIS PROPERTY

- Located on the banks of the South Maroochy River with access for swimming/kayaking/fishing
- FRESHWATER due to natural weir downstream that forms a lagoon which is the centre magical 180 degree Maroochy River views from the main Homestead and it's verandas.
- Fenced paddock, orchard and chook pen!
- Pretty dam and wildlife galore including platypus in the river, black swans and nesting freshwater turtles.
- A boxed out driveway with geo and rubble with road base, very stable with a huge area for car parking at house and sheds

"RIVERWOOD" - THE MAIN HOMESTEAD

- A sweeping driveway with a film star feel!
- Four bedrooms, Three bathrooms in an Indonesian theme and is architect designed with gorgeous 5m high vaulted ceilings giving space and light throughout the home
- Frameless glass doors for magnificent river views
- High quality fixtures and fittings for all bathrooms, laundry, kitchen, fans and lights
- Quality kitchen with river views and a butlers pantry
- New rear and side decks and portico with Merbau hardwood and 300mm natural poles with amazing views to River and beyond - a beautiful spot for sunrises and sun sets
- Fireplace with local rock from the river

6 BED | 4 BATH | 10 CAR

PRICE:

Two Separate Homes & 4.2 Flat Acres

OPEN FOR INSPECTION:

N/A

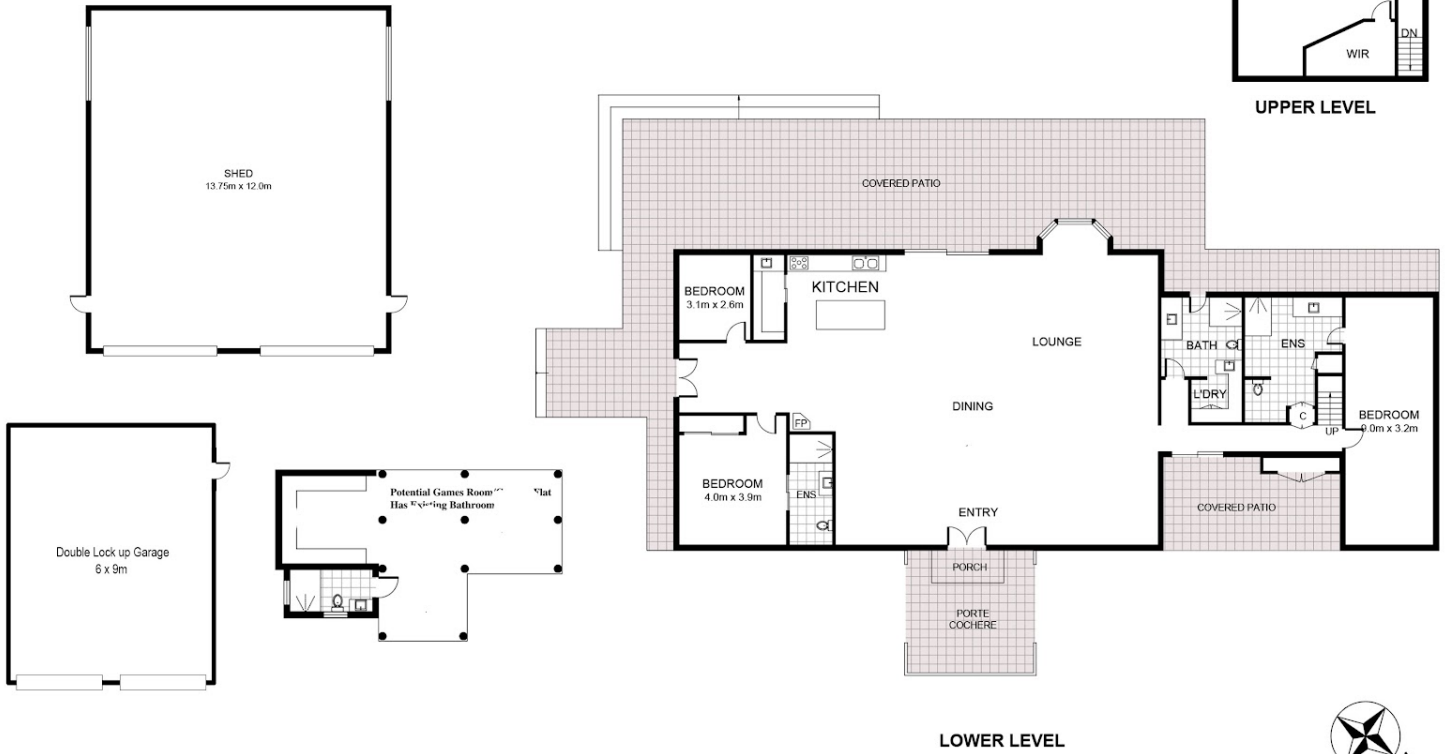
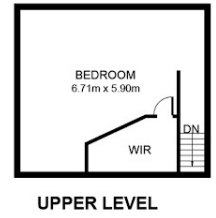


Wendi Turner

0435770030

wendi@atrealty.com.au

www.atrealty.com.au



(Floor Plan For Illustrative Purposes Only)

Scale in metres. We give no guarantee, warranty or representation as to the accuracy and completeness of the floor plan. We recommend that you instruct your own surveyor to carry out an independent investigation of the property prior to relying on the accuracy and completeness of this plan. Floor plan created by www.sunshinepropertyphotos.com.au



Main Homestead

111 Colemans Farm Road, Yandina

Disclaimer: Please note this floor plan is for marketing purposes and is to be used as a guide only. All dimensions are estimates only and may not be exact measurements.