



SOLD

CHARM, COMFORT AND CONVENIENCE!

This beautiful home showcases quality both inside and out. Situated in a fantastic Werribee location, you're just a short drive to everything this vibrant community has to offer, including:

- Werribee Train Station for an effortless commute to the Melbourne CBD.
- The bustling Pacific Werribee Shopping Centre for all your retail and dining needs.
- Highly-regarded local schools and childcare facilities, making the daily school run a breeze.
- Easy access to the Princes Freeway for a simple trip into the city or down the coast.
- The world-class Werribee Open Range Zoo and the historic Werribee Mansion are right on your doorstep.

Boasting three good-sized bedrooms, each with built-in robes and carpets, this home provides a comfortable and private space for the whole family. The large open-plan dining area adjoins a spacious kitchen, which is complimented by quality appliances.

Step outside to the low-maintenance backyard, ideal for those wanting to enjoy their outdoor space all year round without the hassle. Other inviting features include ducted heating, side access to the rear and single car remote garage for all your storage needs.

This property is a fantastic opportunity for first-time buyers, growing families, or investors looking for a quality asset in a sought-after area.

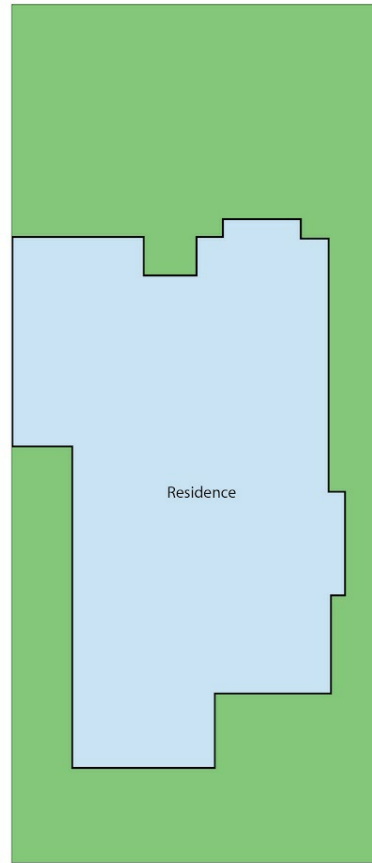
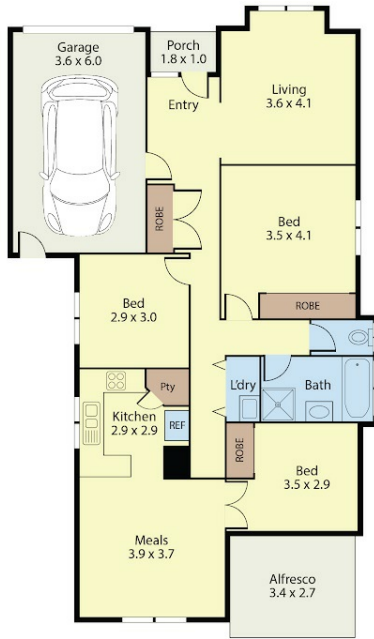
3 BED | 1 BATH | 1 CAR

PRICE:
\$510,000

OPEN FOR INSPECTION:
N/A



Joseph Hanna
0423966320
joseph@atrealty.com.au
www.atrealty.com.au



33 Hooker Rd, Werribee

Dimensions are approximate and for illustrative purposes only



Disclaimer: Please note this floor plan is for marketing purposes and is to be used as a guide only. All dimensions are estimates only and may not be exact measurements.