

**SOLD**

## PREMIUM LUXURY, STYLE AND SOPHISTICATION

Already completed and ready for you to move in, this brand new residence showcases sun-drenched open plan living, dining and hostess kitchen with stone benches, Blaupunkt appliances (including dishwasher) and self-closing cabinetry.

Sliding doors provide a streamlined flow of space, spilling out onto an outdoor entertaining area and low-maintenance courtyard, appreciating a north-facing aspect.

Upstairs you will discover a spacious second living area, three generous bedrooms, master includes a stunning full ensuite and walk-in robe. Bedrooms two and three are serviced by a second central bathroom.

Additional extras include a downstairs powder room and European laundry, along with electric ducted heating and refrigerated air conditioning, double-glazed windows, a water tank and double garage with internal entry.

Nestled in an inviting location, close to Kilsyth Primary, Yarra Hills Secondary, Chruing Shopping Centre, buses and a short drive to Main St Croydon.

CALL BILL NOW FOR MORE INFORMATION AND INSPECTION TIMES 0419514276

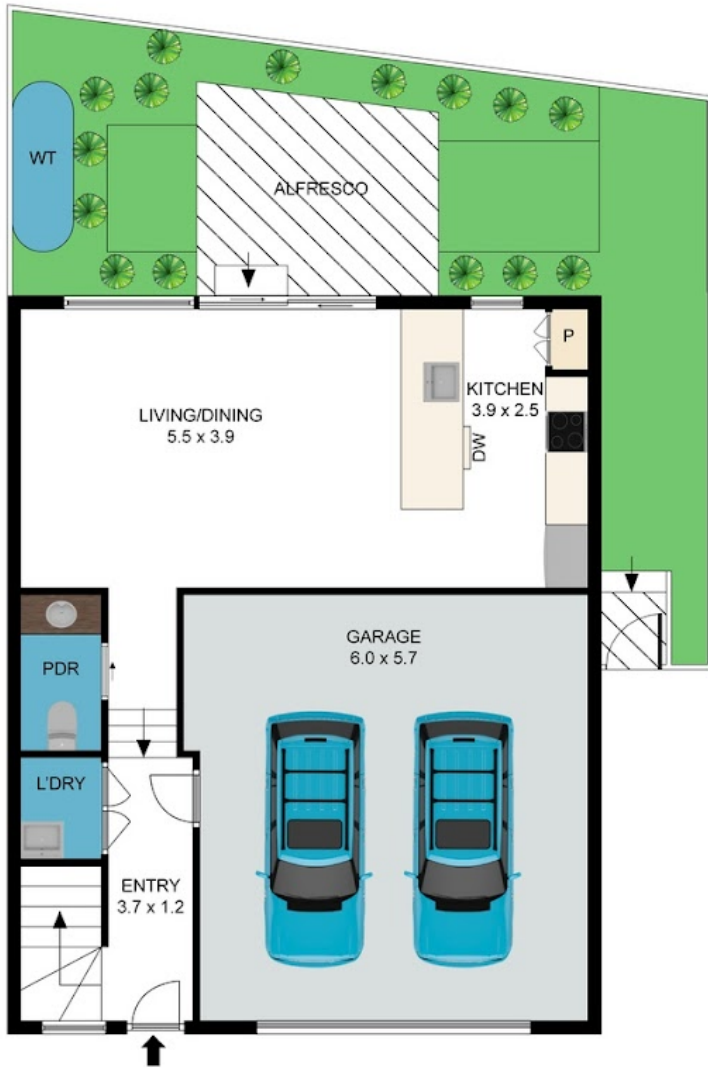
3 BED | 2 BATH | 2 CAR

PRICE:  
\$790,000

OPEN FOR INSPECTION:  
N/A



**Bill Katsoulis**  
**0419514276**  
billkatsoulis@atrealty.com.au  
[www.atrealty.com.au](http://www.atrealty.com.au)



GROUND FLOOR



1ST FLOOR

Disclaimer: Please note this floor plan is for marketing purposes and is to be used as a guide only. All dimensions are estimates only and may not be exact measurements.

Bill Katsoulis  
0419514276

billkatsoulis@atrealty.com.au  
www.atrealty.com.au

Unit 3/8 Idinia Street, Kilsyth

Whilst every attempt has been made to ensure the accuracy of the floor plan contained here, measurements of doors, windows, other items are approximate and no responsibility is taken for any error, omission, or mis-statement. This plan is for illustrative purposes only and should be used as such by any prospective purchaser. The services, systems and appliances shown have not been tested and no guarantee as to their operability or efficiency can be given.



