

17 GLENDALE CRESCENT, OCEAN SHORES, NSW, 2483



**SOLD**

## PRIVATE & SCENIC ON WATER LILY PARK

Located in a quiet cul-de-sac with frontage on to pretty Water Lily Park, this delightful brick home is a must to inspect.

Sitting on a level 602m<sup>2</sup> flood free block of land, it offers scenic vistas over the rear garden into the park.

On entry the open floor plan with living, dining and kitchen flows out onto the covered entertaining area and private garden.

The stylish new kitchen with quality appliances is any cook's dream to be preparing delicious meals in and is the hub of family gatherings.

Three bedrooms, all with built-ins and garden views. The primary bedroom comes with an ensuite, whilst the other two bedrooms share the main bathroom.

A fully fenced yard with fruit trees, is pet friendly, and a relaxing place to chill, whether you're reading, writing, painting or just 'being'

The entire home has security screens for comfort in the summer, 4.98 KW of solar power and a single lock up garage.

The rates are \$3528 per year.

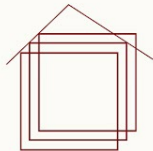
**3 BED | 2 BATH | 1 CAR**

**PRICE:**  
**\$1,100,000**

**OPEN FOR INSPECTION:**  
**N/A**



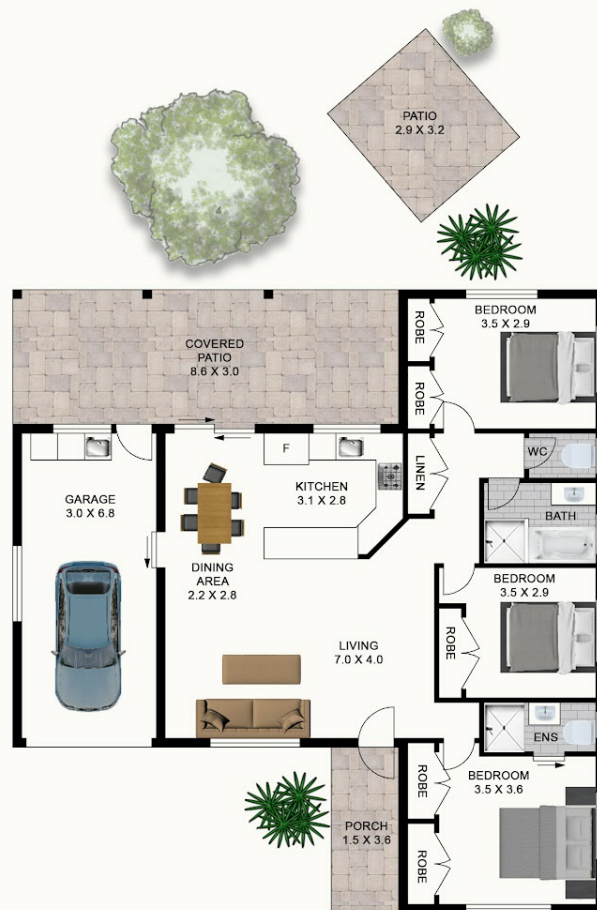
**Ruth Russell**  
**0402855929**  
ruthrussell@atrealty.com.au  
[www.atrealty.com.au](http://www.atrealty.com.au)



**RRR**

RUTH RUSSELL REALTY

# 17 Glendale Cres



Disclaimer: Floor Plan measurements are approximate and are for illustrative purposes only. While we do not doubt the floor plans accuracy, we make no guarantee, warranty or representation as to the accuracy and completeness of the floor plan. You or your advisors should conduct a careful, independent investigation of the property to determine to your satisfaction as to the suitability of the property for your space requirements.

**BED: 3 BATH: 2 CAR: 1**



**INTERIOR FLOOR: 112m<sup>2</sup>**

Disclaimer: Please note this floor plan is for marketing purposes and is to be used as a guide only. All dimensions are estimates only and may not be exact measurements.