



SOLD

BEACHSIDE FAMILY HAVEN ON 1075SQM

Nestled in the sought after community of Emerald Beach, this charming three-bedroom home at 37 Fishermans Drive presents an exceptional opportunity to secure your slice of coastal paradise. This low maintenance residence sits on a generous 1,075 square metre block, offering space, comfort, and the ultimate beachside lifestyle that families and sea-change seekers dream about.

Featuring ducted air conditioning for all year comfort and including three comfortable sized bedrooms, a walk-in robe in the main bedroom and built in robes in bedroom 2. A large two way bathroom services the home efficiently, providing a double sized shower, bath and separate w.c. The central kitchen utilizes gas cooking and includes a dishwasher and walk in pantry. The living room opens to the rear patio and enjoys a terrific bushland view. For outdoor entertaining there is a massive under cover patio with access to the double garage which also contains a handy 2nd toilet.

The large sized allotment provides plenty of space for gardening, a pool or perhaps granny flat and has easy side access for vehicles. The outlook is the bush and creek reserve at the rear.

This property is just a short walk to cafes' and beaches.

Emerald Beach is renowned as one of the Mid North Coast's most sought-after coastal communities, where beautiful beaches meet lush hinterland. The area offers excellent access to quality schools, childcare facilities, and essential services, while the nearby Pacific Highway provides seamless connectivity to Coffs Harbour and beyond.

Experience the magic of coastal living where every day feels like a holiday, and the sound of waves becomes your daily soundtrack. This is your chance to call Emerald Beach home.

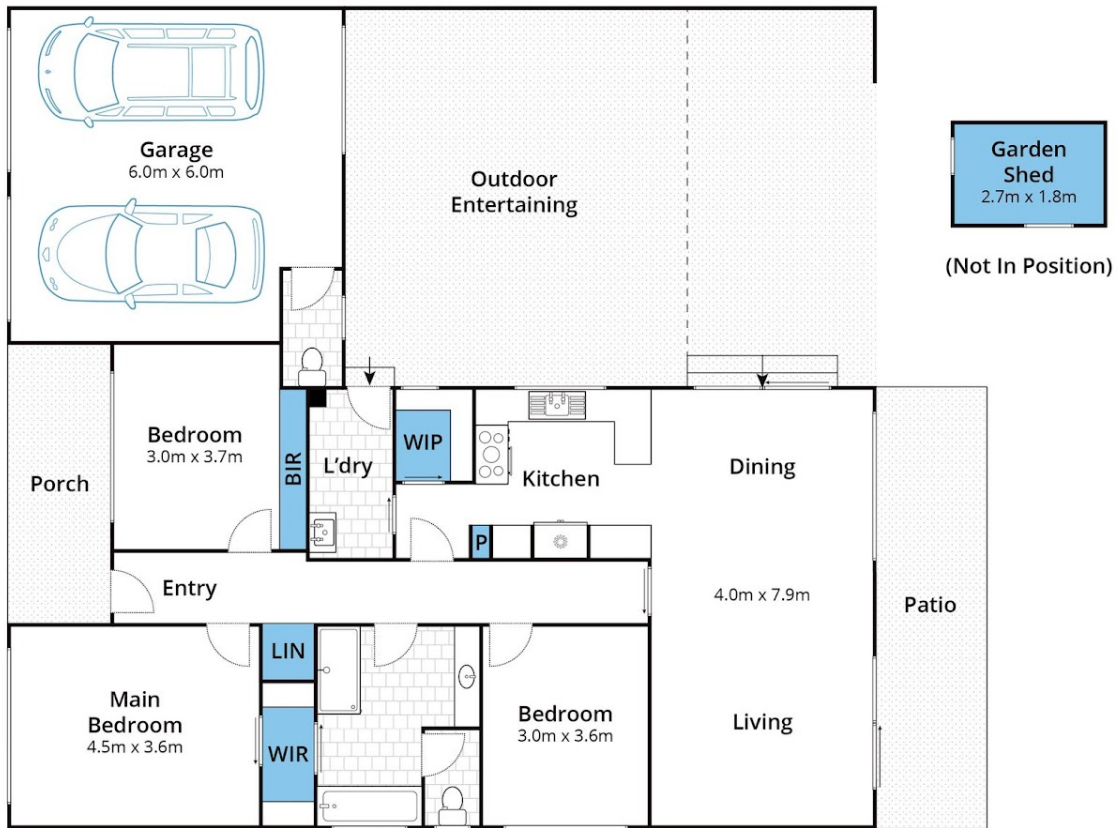
3 BED | 1 BATH | 2 CAR

PRICE:
\$1,015,000

OPEN FOR INSPECTION:
N/A



David Tompkins
0404158364
davet@atrealty.com.au
www.atrealty.com.au



Approx House Area 157m²

Whilst bwrn.com.au has made every attempt to ensure the accuracy of the floor plan contained here, measurements are approximate and no responsibility is taken for any error, omission, or mis-statement. This plan is for illustrative purposes only.

37 Fishermans Drive, Emerald Beach



DAVE REAL ESTATE
TOMPKINS

@realty

Disclaimer: Please note this floor plan is for marketing purposes and is to be used as a guide only. All dimensions are estimates only and may not be exact measurements.

David Tompkins
0404158364
davet@atrealty.com.au
www.atrealty.com.au

@realty