



SOLD

COASTAL SANCTUARY IN CAPE PATERSON

Discover a sublime coastal retreat positioned high on tree-lined land in one of the Bass Coast's most coveted seaside hamlets. This thoughtfully designed home captures the essence of relaxed Australian coastal living, where the constant, soothing ocean soundtrack filters through the mature canopy.

Designed for Coastal Living:

The home's genius lies in its dual deck design – perfectly positioned to follow the sun's path throughout the day. Start your morning with garden tranquility on the east-facing deck, then retreat to the afternoon sanctuary as the seasons dictate. The master suite opens directly onto a sublime north-facing deck, creating your own private coastal haven.

Authentic Character, Modern Comfort:

Lovingly reimagined by the current owners, this mid-century gem seamlessly blends authentic charm with contemporary functionality.

Living Spaces:

Solid timber floors throughout
Three spacious bedrooms with master suite deck access
Modern kitchen featuring stainless steel appliances and separate pantry
Cosy wood-burning stove for winter evenings

Sustainable Features:

Full solar array to minimize energy costs
Heat pump hot water service
Thoughtfully designed for natural light and ventilation

Practical Excellence:

Two large under-house storage areas have been cleverly incorporated into the design.
Studio/Workshop space with full plumbing – perfect for creative pursuits or home business
Equipment storage with roller door access for all your beach toys and coastal lifestyle essentials

The Cape Paterson Lifestyle:

Whether you're drawn to the unparalleled coastal positioning, the authentic architectural charm, or simply the prospect of waking to ocean sounds and views every morning, this property

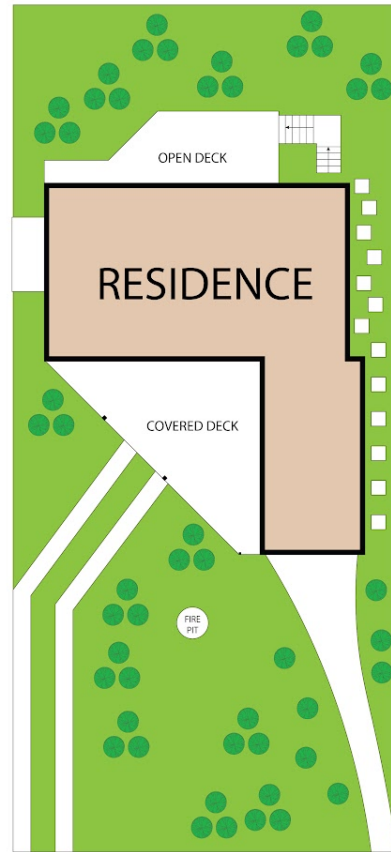
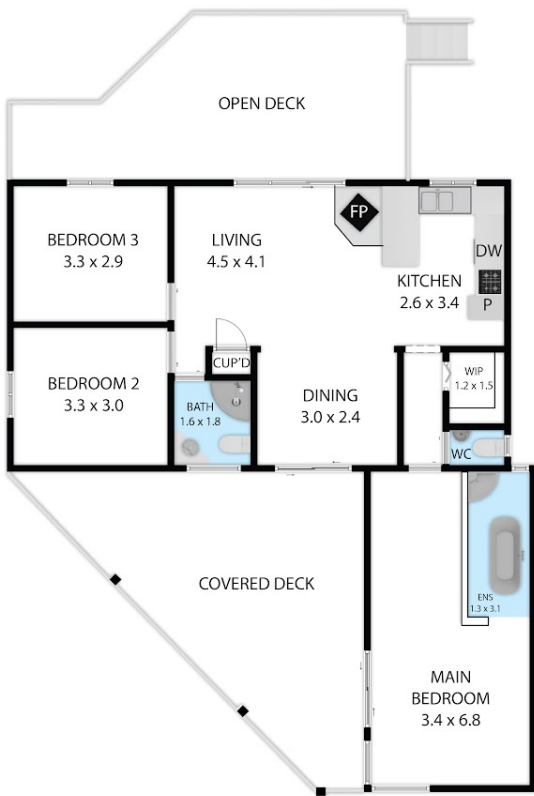
3 BED | 2 BATH | 2 CAR

PRICE:
\$686,000

OPEN FOR INSPECTION:
N/A



Leo Edwards
0472523445
leo@atrealty.com.au
www.atrealty.com.au



67 Anchor Parade, Cape Paterson, VIC, 3995

TOTAL APPROX. FLOOR AREA 110 SQ.M

Whilst every attempt has been made to ensure the accuracy of the floor plan contained here, measurements of doors, windows, rooms and any other items are approximate and no responsibility is taken for any error, omission, or misstatement. This plan is for illustrative purposes only and should be used as such by any prospective purchaser.

INVERLOCH
REALTY

@realty

Disclaimer: Please note this floor plan is for marketing purposes and is to be used as a guide only. All dimensions are estimates only and may not be exact measurements.

Leo Edwards
0472523445
leo@atrealty.com.au
www.atrealty.com.au

@realty