



SOLD

RESORT STYLE LIVING AT ITS BEST

Resort style Living at it's best in one of the most beautiful parts of the Mid North Coast.

If you are in that stage of your life where it is time to relax and enjoy yourself, here is the chance to be part of a vibrant community and have the pick of fantastic facilities to keep your life fun, healthy and active.

South West Rocks is a stunning coastal town with beautiful beaches, a buzzing town centre with tasty cafes and restaurants, an excellent 18-hole golf course only minutes away and with direct access in your cart, and surrounded by National Parks, it really is hard to match for a quality lifestyle.

The Links is a wonderfully designed over 55s Retirement Lifestyle Community with the following outstanding features

- Under construction, an impressive \$3m Clubhouse, to be completed by early 2026
- Practice Putting & Chipping Greens
- 25m Outdoor Pool & BBQ Area
- Pickle Ball Courts
- Croquet Court
- Professional Sized Bowling Green
- Gym & Amenities
- Recreation Vehicle Storage
- Community Construction Shed
- Fully Fenced Off-leash dog park
- 15m Heated Indoor Pool & Spa

This home is at the top end of the choices on offer in the community being a very spacious 3-bedroom, 2-bathroom combination with a double garage and large outdoor area. With exceptional finishes including high ceilings and skylights, floor to ceiling tiles in the bathrooms, spacious open plan living and air-conditioning, this is an incredibly comfortable home that stands out.

Having only been completed 18 months ago everything feels new and fresh and you have the comfort of knowing it is still under Builders Warranty.

3 BED | 2 BATH | 2 CAR

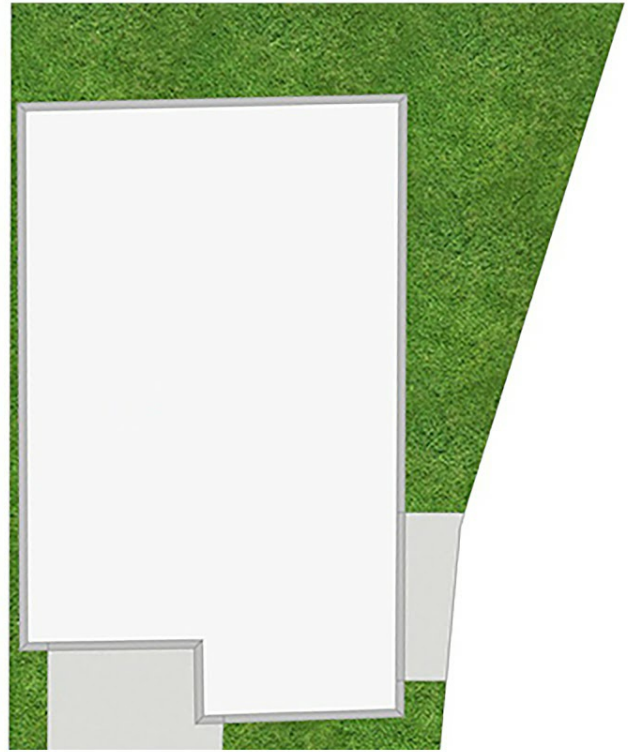
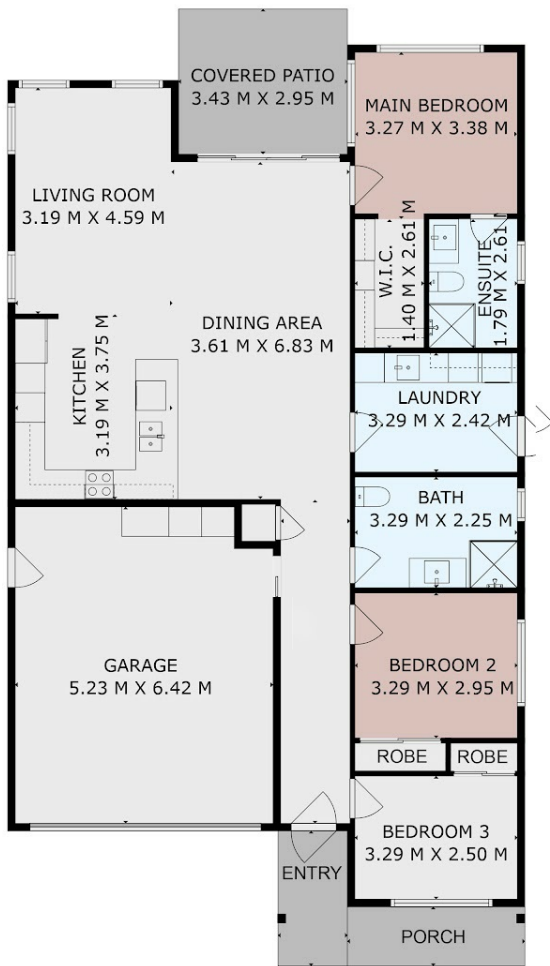
PRICE:
\$810,000

OPEN FOR INSPECTION:
N/A



Phil Sheridan
0413520435

phil@sheridanrealestate.com.au
www.sheridanrealestate.com.au



SRE
SHERIDAN REAL ESTATE

52 Sunnydale Crescent, South West Rocks

Total Size: 152m²

All measurements have been created digitally. These measurements are approximate only.



Disclaimer: Please note this floor plan is for marketing purposes and is to be used as a guide only. All dimensions are estimates only and may not be exact measurements.

Phil Sheridan
0413520435
phil@sheridanrealestate.com.au
www.sheridanrealestate.com.au

@realty