

SOLD

TRUE LIFESTYLE HOME

5 Markham Drive is at the pinnacle of bringing indoor and outdoor living together. The clever design, along with so many upgrades and extras, make this home something truly special. Set in the heart of Calderwood Valley Estate with manicured lawns and gorgeous gardens, this 4 bedroom family home will have you craving more.

Features include 4 spacious bedrooms, the main with a walk in robe and designer ensuite, 10ft ceilings with square set shadow cornice throughout, formal media room, a huge open plan living adjoins a gorgeous kitchen that overlooks the clever dining space with double-stack sliding doors that invite you out to the huge alfresco dining and bowling green back yard. The 512m2 corner block affords side access via Colourbond gates, perfect for caravans, boats or trailers. This family home is the true definition of indoor and outdoor entertaining.

Located only minutes from multiple local parks with BBQ facilities, basketball courts, playgrounds, the Plough & Ale Tavern and the forthcoming shopping precinct, invest in the future of the Illawarra's most progressive and exciting estate. Don't miss this fantastic opportunity, phone Peter Bullman today for more information.

4 BED | 2 BATH | 2 CAR

PRICE:

\$0

OPEN FOR INSPECTION:

N/A

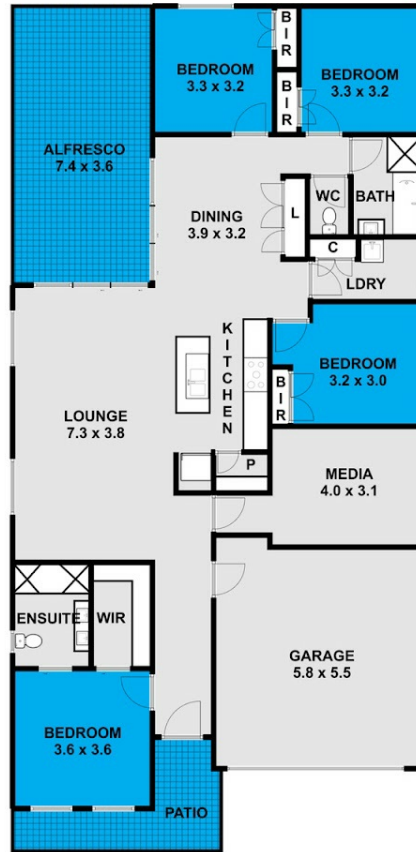


Peter Bullman

0401394394

peterb@atrealty.com.au

www.atrealty.com.au



This floor plan including furniture, fixture measurements and dimensions are approximate and for illustrative purposes only.
@Realty gives no guarantee, warranty or representation as to the accuracy and layout.
All enquiries must be directed to the agent, vendor or party representing this floor plan.

5 Markham Drive Calderwood

Disclaimer: Please note this floor plan is for marketing purposes and is to be used as a guide only. All dimensions are estimates only and may not be exact measurements.