



FOR SALE

DUAL LIVING WITH TRANQUIL SURROUNDINGS

NOTE: House has no Form 21- Please contact Mitch for clarification

Nestled on a serene 2-acre parcel in the heart of Delaneys Creek, this property offers the perfect blend of privacy, space, and relaxed country living — all just a short walk to the local primary school.

The tranquil residence is the ideal tree change you have been looking for boasting four bedrooms, two bathrooms, and two generous living areas, ample space for families or those who love to entertain. Surrounded by established gardens, open lawns, and lush greenery, the home captures the essence of peaceful country living.

A true highlight is the separate cabin, ideal for guests, a teenage retreat, or a private home office. Adding to the versatility of this property is a 16m x 7.5m shed, complemented by an additional shelter — perfect for storage, hobbies, or weekend projects.

Property Features:

- Expansive 2-acre parcel offering excellent privacy
- 4-bedroom, 2-bathroom main residence with an office and 2 living areas
- Separate guest cabin — ideal for visitors, teens, or work-from-home needs
- Large shed for tools, storage, or hobbies
- Established veggie gardens and lush green surrounds
- Peaceful, family-friendly setting with room to expand or explore
- Walking distance to Delaneys Creek State School
- Conveniently located minutes from Woodford and a short drive to Caboolture

Whether you're looking for space for children to play, room for a few animals, or simply a private retreat surrounded by nature, this property delivers it all.

Don't miss this opportunity to secure your own slice of country paradise — arrange your inspection of 71 Delaneys Creek School Road today!

We make no representation or warranty as to the accuracy, reliability or completeness of the information relating to the property. Some information has been obtained from third parties and has not been independently verified. Accordingly, no warranty, representation or undertaking,

4 BED | 2 BATH | 4 CAR

PRICE:

OFFERS OVER \$870,000

OPEN FOR INSPECTION:

N/A

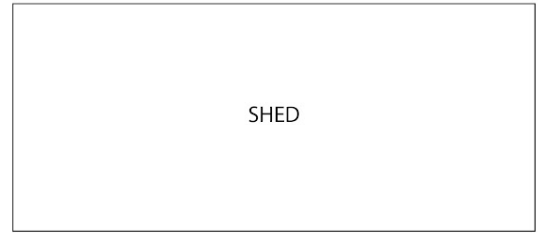
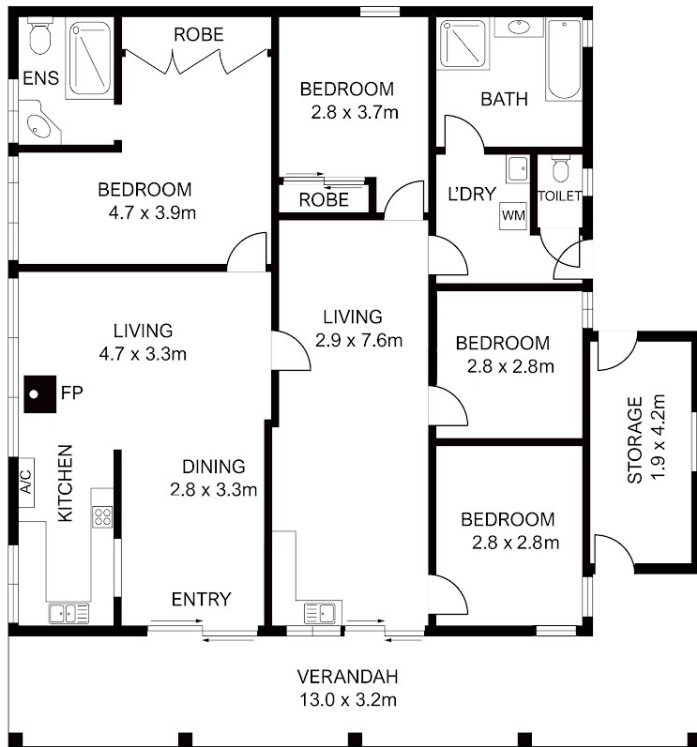


Mitchell Younger

0488458887

mitchell.younger@atrealty.com.au

www.atrealty.com.au



FLOOR PLAN

This floor plan including furniture, fixture measurements and dimensions are approximate and for illustrative purposes only. BoxBrownie.com gives no guarantee, warranty or representation as to the accuracy and layout. All enquiries must be directed to the agent, vendor or party representing this floor plan.

Disclaimer: Please note this floor plan is for marketing purposes and is to be used as a guide only. All dimensions are estimates only and may not be exact measurements.