

37 CORNWELL CRESCENT, CRANBOURNE EAST, VIC, 3977



SOLD

PERFECT START IN A PRIME LOCATION

Positioned in the sought-after pocket near the renowned Hunt Club Estate, this inviting 3-bedroom home offers exceptional value in a lifestyle-rich location. Surrounded by parks, walking tracks, quality schools, and just minutes to major shopping precincts, it's a home that truly delivers more than you'd expect.

Step inside and enjoy:

- 3 well-proportioned bedrooms with a central family bathroom
- Light-filled open living with split system heating and cooling for year-round comfort
- Neat kitchen and meals area with direct access outdoors
- Double remote garage with convenient corner block positioning
- Low-maintenance brick construction and easy-care gardens

Whether you're starting out, downsizing, or looking for a smart investment, this property is a perfect choice with location and lifestyle front of mind.

Please note: Every care has been taken to verify the accuracy of the details in this advertisement; however, we cannot guarantee its correctness. Prospective purchasers are requested to take such action as is necessary to satisfy themselves of any pertinent matters. Buyer(s) are advised to refer to the Due Diligence Checklist provided by Consumer Affairs Victoria prior to purchasing a property.

www.consumer.vic.gov.au/duediligencechecklist

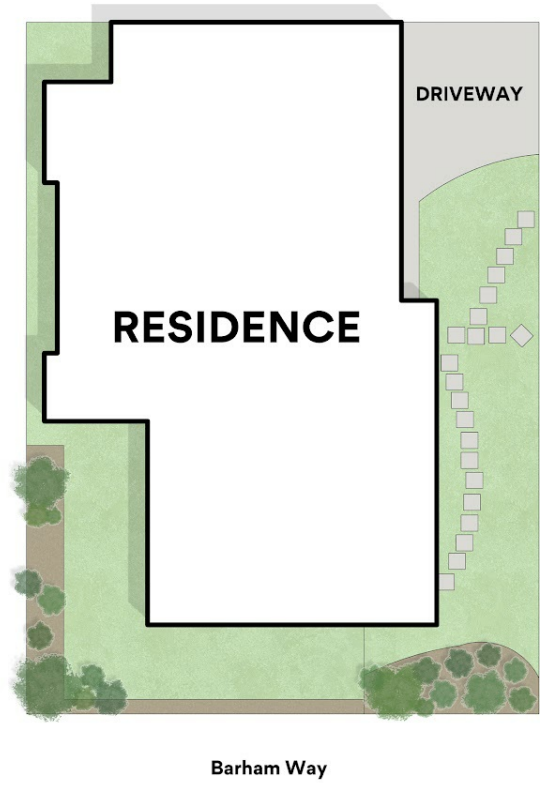
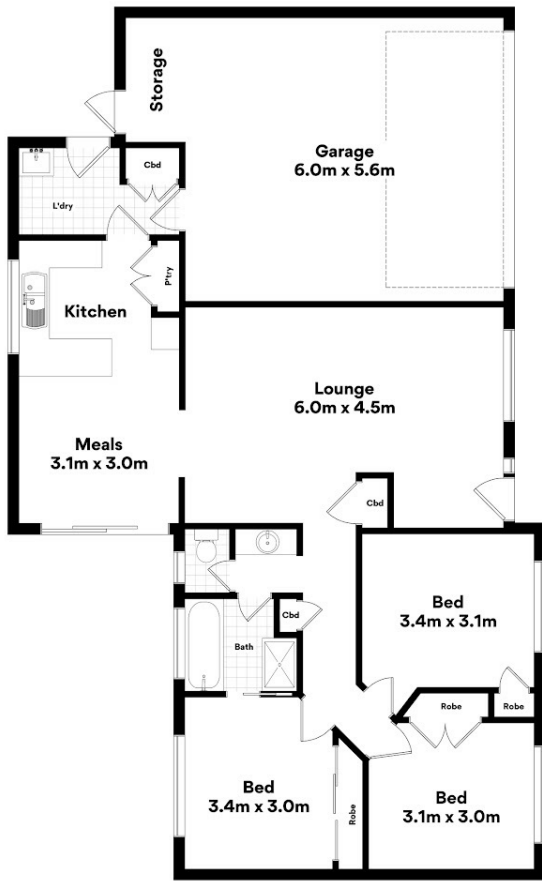
3 BED | 1 BATH | 2 CAR

PRICE:
\$674,200

OPEN FOR INSPECTION:
N/A



Tamara Leskie
0448809458
tamara.leskie@atrealty.com.au
www.atrealtypropertyexperts.com.au



37 Cornwell Cres, Cranbourne East

Whilst every attempt has been made to ensure the accuracy of the floorplans contained here, measurements of doors, windows and rooms are approximate and no responsibility is taken for any error, omission or misstatement. These plans are for representation purposes only.

Disclaimer: Please note this floor plan is for marketing purposes and is to be used as a guide only. All dimensions are estimates only and may not be exact measurements.