



SOLD

LOW-SET BERRINBA VILLA | LOW-MAINTENANCE, HIGH ON LIFESTYLE | ALARM/CAMERAS.

Perfectly positioned in one of Berrinba's most sought-after pockets, this beautifully maintained, owner-occupied brick villa seamlessly blends lifestyle, location, and low-maintenance living. Set in a quiet, well-managed complex of just 23 villas, it has been well-maintained from every corner and offers rare outdoor space for families and entertainers.

Step inside to a light-filled, open-plan living zone flowing over easy-care tiles. The modern kitchen features Caesarstone benchtops, an electric cooktop, oven, rangehood and dishwasher —ideal for everyday cooking and weekend entertaining.

The outdoor areas are a standout: an expansive backyard plus a large covered alfresco—perfect for family gatherings, friends over, or a relaxed BBQ.

Property Highlights

- Low-set brick villa – single level, easy living for all ages.
- Quiet, well-managed boutique complex of 23 (mostly owner-occupied).
- Light-filled open-plan living & dining flowing over easy-care tiles.
- Contemporary kitchen with Caesarstone benchtops, electric cooktop, oven, rangehood & dishwasher.
- Master bedroom with mirrored walk-in robe and ensuite.
- Two additional bedrooms with built-ins & ceiling fans.
- Large, tiled, covered alfresco opening to a generous backyard — perfect for year-round entertaining.
- Smart alarm system with security camera monitoring for peace of mind.
- Split-system air-conditioning to the living; LED downlights.
- Fully landscaped, front to back.
- Remote single lock-up garage with internal access.
- Separate internal laundry for added convenience.
- Separate toilet.
- Solar system 6.2 KW & water tank (3000L) for efficiency.

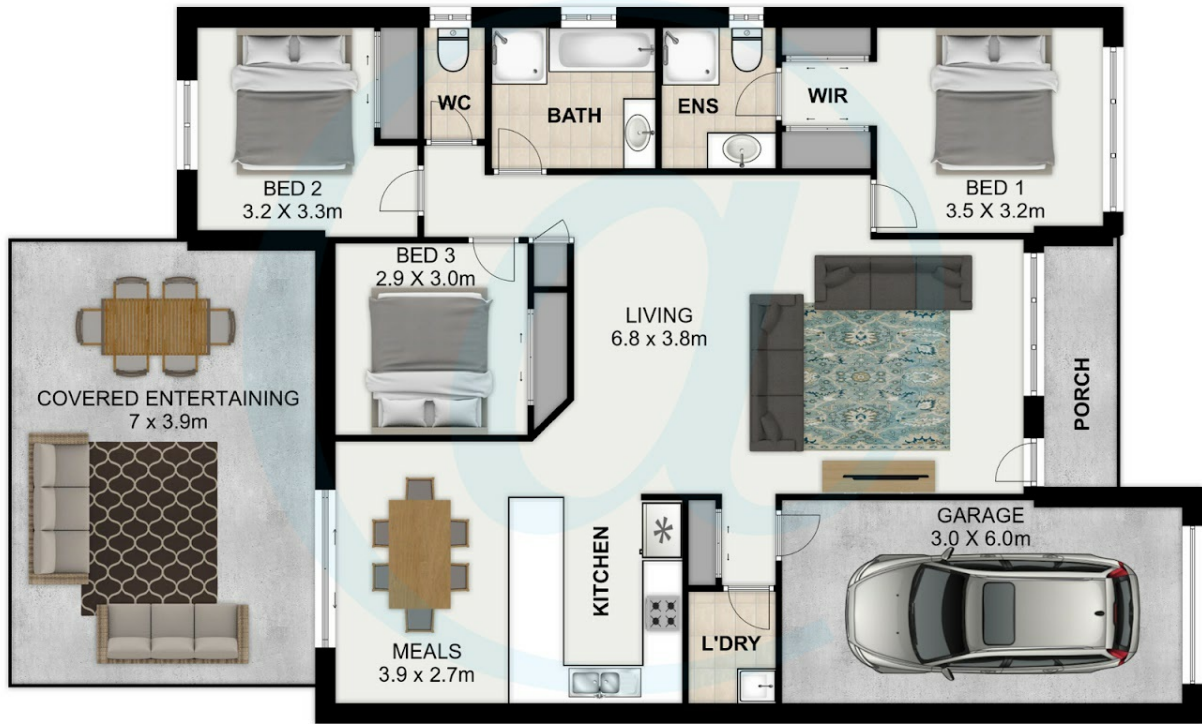
3 BED | 2 BATH | 1 CAR

PRICE:
\$755,555

OPEN FOR INSPECTION:
N/A



Yogi Sharma
0415558800
yogi.sharma@atrealty.com.au
www.atrealty.com.au



This floorplan is not to scale; measurements are indicative and in meters. Exterior elements are not in position. Plans should not be relied on. Interested parties should make and rely on their own enquiries. All other information provided has been collected from reliable sources but cannot be guaranteed for accuracy.

2/52-54 Freshwater Drive , **BERRINBA**



Disclaimer: Please note this floor plan is for marketing purposes and is to be used as a guide only. All dimensions are estimates only and may not be exact measurements.

Yogi Sharma
0415558800
 yogi.sharma@atrealty.com.au
www.atrealty.com.au

