



SOLD

PEACEFUL COUNTRY LIVING WITH STUNNING MOUNTAIN VIEWS

Set on approximately 2.5 acres of picturesque land, this charming 2-bedroom, 1-bathroom home in the heart of Buxton offers the perfect blend of tranquility, space, and lifestyle. Whether you're looking for a permanent residence, a weekend escape, or exploring the potential for short-stay accommodation (STCA), this property is a rare opportunity to embrace the serenity of country living.

Wake up to breathtaking mountain views, with the home nestled in a quiet and friendly neighbourhood. The land features a generous mix of cleared, gently sloping areas, a fruit orchard, and natural bushland, all enhanced by a seasonal creek and an abundance of local wildlife – a true nature lover's haven.

The home itself offers a light-filled, open-plan kitchen, living and meals area, perfectly suited for relaxed country living. A cozy wood heater keeps things warm through the cooler months, while a reverse-cycle split system A/C ensures comfort year-round.

Just a short stroll to the local primary school and beloved Buxton pub, this property also enjoys close proximity to Lake Mountain alpine resort, the vibrant township of Marysville, approx. 35-minute drive to Healesville or 25 minutes to Alexandra.

Whether you're sipping your morning coffee on the veranda, exploring the nearby walking trails, or watching the local birdlife, this home offers a true sense of calm and relaxation.

Call David today to book your private inspection.

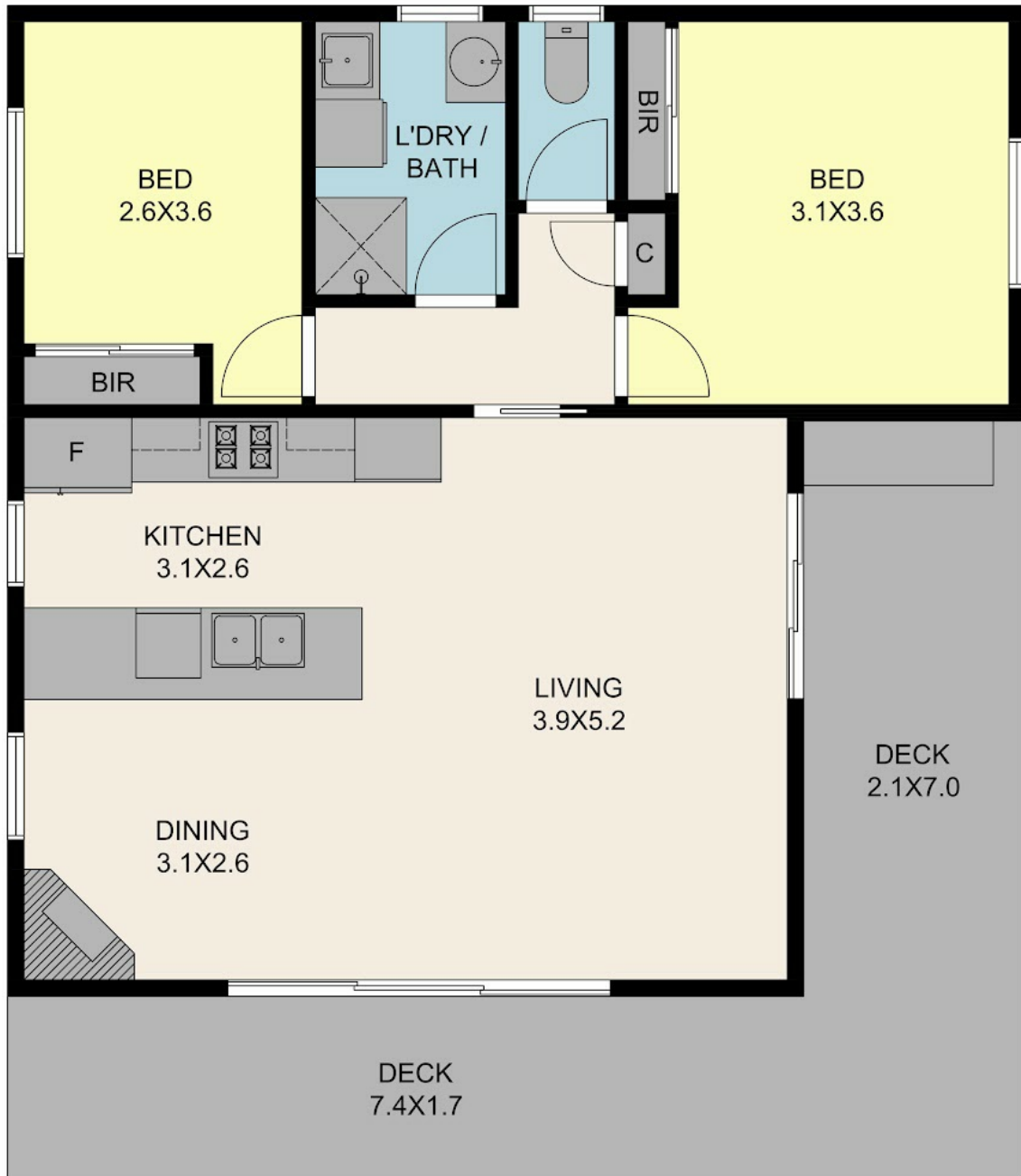
2 BED | 1 BATH | 0 CAR

PRICE:
\$675,000

OPEN FOR INSPECTION:
N/A



David McKee
0419150009
david.mckee@atrealty.com.au
www.atrealty.com.au



Disclaimer: Please note this floor plan is for marketing purposes and is to be used as a guide only. All dimensions are estimates only and may not be exact measurements.

TOTAL APPROX. FLOOR AREA 76 SQ.M

Whilst every attempt has been made to ensure the accuracy of the floor plan contained here, measurements of doors, windows, rooms and any other items are approximate and no responsibility is taken for any error, omission, or misstatement. This plan is for illustrative purposes only and should be used as such by any prospective purchaser.

David McKee
 0419150009
 david.mckee@atrealty.com.au
www.atrealty.com.au

