



FOR SALE

'BAIA' – ULTIMATE BAYSIDE HAVEN OF LUXURY & LEISURE

A signature creation by PAMA Constructions, 'BAIA' extends an invitation to a dream bayside lifestyle of refined taste and pure quality. This vision includes beautiful flooring and joinery, designer fittings, spacious bedrooms and opulent bathrooms, all combining to assure the family's environment is a daily reminder of the importance of standards of excellence. It is designed as a forever home, including an internal lift to help with access to three of the four levels, in a floorplan which reveals that when it comes to entertaining, we are simply spoilt for choice. Blessed with a perfect north-east aspect, bring everyone together in the formal living area, or in the rumpus room below – both levels possess their own alfresco area with a state-of-the-art outdoor kitchen. Live your life vividly, enjoying the home's shimmering water views and sensational finishes, and the superb location where it resides. Enjoy bay walks and park time, along with easy access to esteemed schools and vibrant retail and hospitality hubs in Five Dock and Drummoyne.

Engineered flooring in Oak and Willow, custom glass lighting perfects the mood. Floor-to-ceiling glass maximises the north-east aspect with district & water views. Splashes of Imperial Green Quartzite Stone; Ajax marble evoke superior aesthetic & class. Welcome to a stunning formal living area with a marble-encased landscape fireplace. Kitchen; butler's pantry of equal quality, Miele integrated appliances with a Billi tap. Both alfresco areas with inspire relaxation, have heat bars for year-round enjoyment. Alfresco kitchens include an Artusi 900mm BBQ, rangehood, Parisi sink, bar fridge. Rumpus room of total privacy that joins with the outdoor media space & pool area. Concertino Travertine floors outdoors, sublime Onyx mosaic pool and spa with heating. Perfectly sized bedrooms with polyurethane BIRs, some rooms have balcony access. Outstanding master suite with water views from bed, luxe bathroom & private balcony. Heritage brass-hammered fittings, Astra Walker tapware in the kitchens & bathrooms. Electric curtains, ducted AC, One-touch lighting, custom storage with cellar options. Garage with 4-car stacker, freestanding building, part of a row of new prestige homes. Abbottsford Public School catchment, near The Bay Run; Lyons Rd eateries / buses.

4 BED | 4 BATH | 5 CAR

PRICE:

Auction - Unless Sold Prior

OPEN FOR INSPECTION:

Oct 11 at 10:45am - 11:30am

Oct 16 at 5:30pm - 6:15pm

Oct 18 at 10:45am - 11:15am

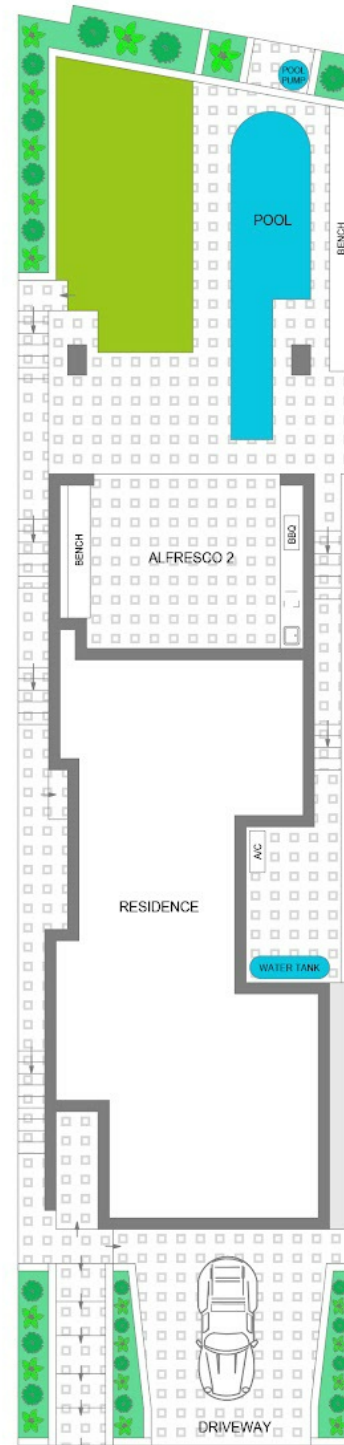
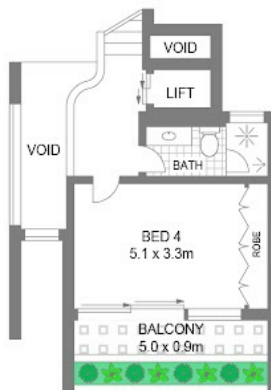
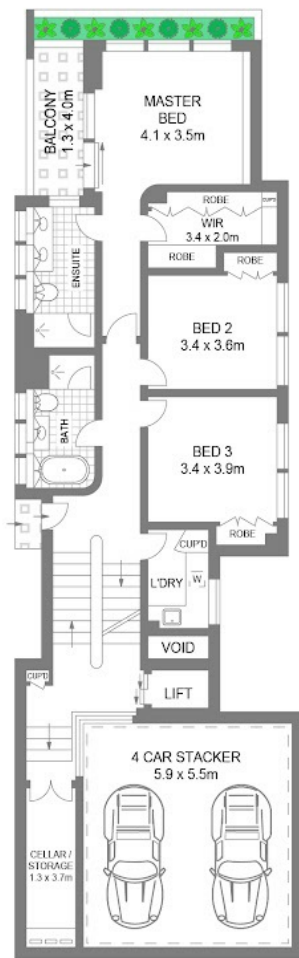


Lee Trakosas

0411118833

lee@kosasproperty.com

[kosasproperty.com](https://www.kosasproperty.com)



INT : 353m²

Disclaimer: Please note this floor plan is for marketing purposes and is to be used as a guide only. All dimensions are estimates only and may not be exact measurements.

Scale in metres.
Indicative only. All information contained herein is obtained from sources we believe to be accurate.
We cannot guarantee its accuracy. Interested persons should make their own enquiries.