

FOR LEASE

SPACIOUS 4-BEDROOM HOME WITH SIDE ACCESS

****PLEASE NOTE RENT WILL INCREASE TO \$670 PER WEEK FROM THE 21/12/2025****

Welcome to 64 Fig Tree Circuit, a modern family home set in one of Caboolture's most popular estates. Designed with comfort and convenience in mind, the layout flows with open-plan living, a well-equipped kitchen, and a covered patio overlooking the backyard. Ducted air-conditioning keeps the home comfortable year-round, while thoughtful extras like solar power and side access make daily life that little bit easier. Bedrooms are generously sized with built-in wardrobes and ceiling fans, and the master enjoys its own ensuite. Outside, the fully fenced yard offers plenty of room for kids, pets, or weekend entertaining.

FEATURES

- Open-plan living, dining, and kitchen filled with natural light
- Gas cooktop and ample storage in the modern kitchen
- Large master bedroom with ensuite & built-in wardrobes
- Three additional bedrooms with built-in wardrobes and ceiling fans
- Main bathroom with separate shower and bathtub
- Ducted air-conditioning throughout + ceiling fans
- Solar power to help with electricity costs
- Covered outdoor patio for entertaining or relaxing
- Fully fenced backyard with side access
- Double remote garage with internal access

LOCATION HIGHLIGHTS

- Situated in the sought-after Fig Tree Estate surrounded by parks and walking paths
- Close to Caboolture Hospital, Central Lakes Shopping Village, and local schools
- Quick Bruce Highway access – approx. 45 minutes to Brisbane or the Sunshine Coast
- Public transport, childcare, and medical facilities nearby

Modern, comfortable, and set in a family-friendly pocket – this one ticks the boxes. Apply online today or get in touch to arrange a viewing.

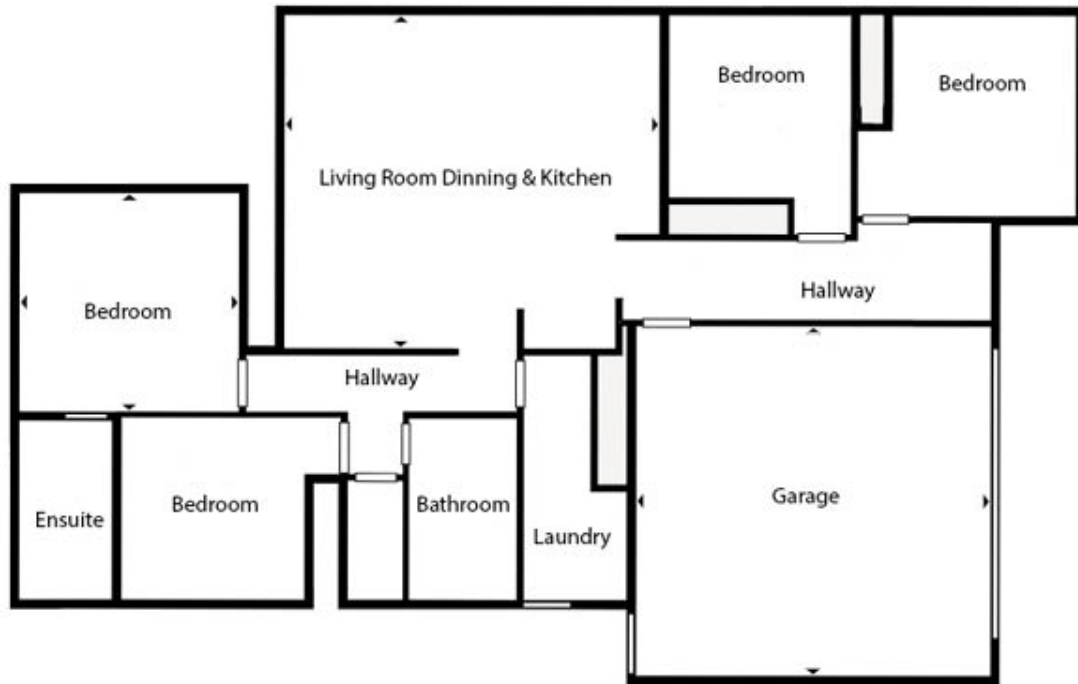
4 BED | 2 BATH | 2 CAR

PRICE:
\$650 per week

OPEN FOR INSPECTION:
N/A



Tom Boyle
0414382312
ruproperty@atrealty.com.au
www.atrealty.com.au



Floor plan, measurements and dimensions are approximate and are for illustrative purposes only. RU Property gives no guarantee, warranty or representation as to the accuracy and completeness of the floor plan.

Disclaimer: Please note this floor plan is for marketing purposes and is to be used as a guide only. All dimensions are estimates only and may not be exact measurements.