

4/19 BLIGH STREET, WOLLONGONG, NSW, 2500



**SOLD**

## FULLY RENOVATED UNIT OFFERING SPACE, LIGHT & LOCATION

This beautifully renovated, move-in ready unit combines modern style with everyday comfort and unbeatable convenience. Set in a well-maintained complex in the heart of Wollongong, it's the perfect opportunity for first-home buyers, downsizers, or investors.

This apartment offers exceptional convenience and an excellent opportunity for a comfortable, easy lifestyle.

### Property Features:

- Freshly painted with brand-new flooring throughout
- Spacious and stylish new kitchen with ample storage and quality finishes
- Renovated bathroom with luxurious freestanding bath and modern fittings
- Separate internal laundry
- Light-filled living and dining areas
- Two generous bedrooms, both with built-in wardrobes
- Private balcony – ideal for outdoor relaxation
- Secure single car garage
- Walk to shops, cafes, public transport, and everything Wollongong CBD has to offer.

Move straight in and enjoy low-maintenance living in one of the region's most sought-after locations.

Enquire now – this one won't last!

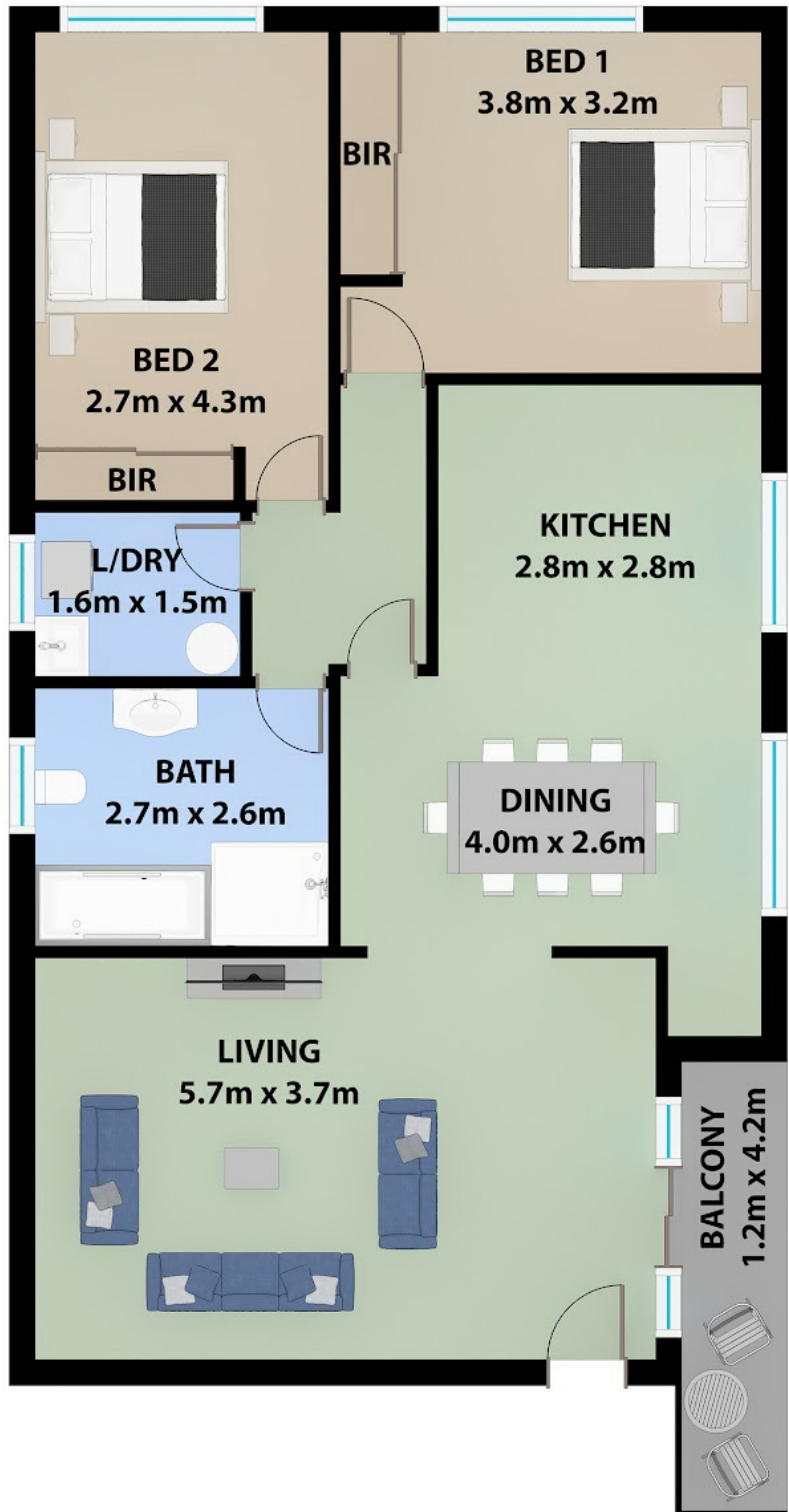
**2 BED | 1 BATH | 1 CAR**

**PRICE:**  
\$685,000

**OPEN FOR INSPECTION:**  
N/A



**Vicky Dukleski**  
**0422605833**  
vicky.dyvineproperty@atrealty.com.au  
[www.atrealty.com.au](http://www.atrealty.com.au)



Disclaimer: Please note this floor plan is for marketing purposes and is to be used as a guide only. All dimensions are estimates only and may not be exact measurements.

INTERNAL : 81.5m<sup>2</sup>  
EXTERNAL : 5.0m<sup>2</sup>  
GARAGE: 21.8m<sup>2</sup>

**TOTAL: 108.3m<sup>2</sup>**

**Vicky Dukieski**

**0422605833**

vicky.dyvineproperty@atrealty.com.au

[www.atrealty.com.au](http://www.atrealty.com.au)



This plan is for presentation purposes only and should not be included as part of any legal document or title. While every endeavour has been made to verify the correct details on this illustration, it is subject to errors, omissions and change without notice.