



SOLD

BIG ON SPACE, LOW ON MAINTENANCE

This one is a real goodie! Bathed in sunshine on a desirable corner site, this exceptionally tidy townhouse offers effortless living with conveniences close by. From Christie Street, you can drive straight into the carport, while the Mitchell Street entrance provides the security of a garage complete with overhead storage.

Freshly repainted inside and new carpet laid, the home feels light and inviting, ready for you to add your own personal touch. The modern kitchen flows into the adjoining dining and living area, with a conservatory extending the space even further. A sliding door opens out to a courtyard, perfect for relaxed outdoor living.

Both bedrooms feature built-in wardrobes. The updated bathroom has a tiled floor, shower and vanity, while the separate toilet has also been renewed with fresh flooring and fittings. You'll find good storage throughout, and the heat pump along with ceiling insulation helps keep the house warm. Further improvements include a newly painted roof.

Enjoy just the right balance of outdoor space - a manageable lawn and garden where you can potter, without the demands of a large section.

With Green Island's shops and services just minutes away, you'll love the lifestyle on offer here. Extremely tidy, well maintained and easy to enjoy, this is townhouse living at its best. Get in touch today to arrange a viewing, we're happy to accommodate times outside of open homes.

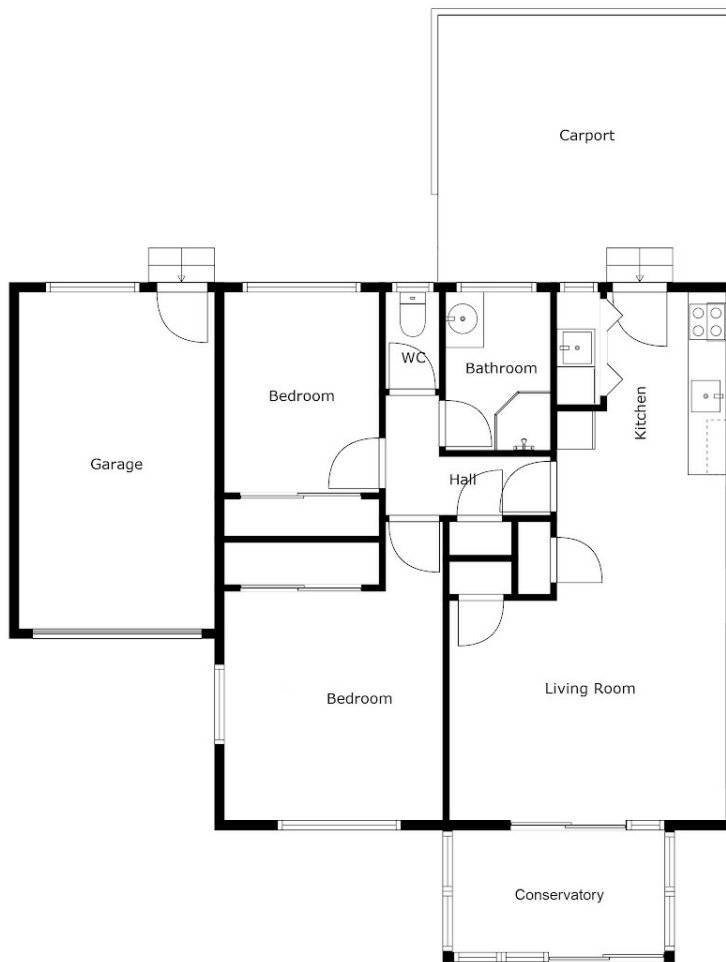
2 BED | 1 BATH | 2 CAR

PRICE:
\$460,000

OPEN FOR INSPECTION:
N/A



Shane and Julie Robinson
021953676
teamrobinson@thecollectiverealty.co.nz
www.thecollectiverealty.co.nz



Sizes And Dimensions Are Approximate, Actual May Vary

Disclaimer: Please note this floor plan is for marketing purposes and is to be used as a guide only. All dimensions are estimates only and may not be exact measurements.