



SOLD

SPACIOUS HIGHSET HOME WITH SHED & SIDE ACCESS IN PRIME LOCATION

Tucked away in a quiet pocket of Kippa-Ring, this property offers the perfect blend of peaceful suburban living with unbeatable convenience. You'll enjoy being just moments from local amenities including shops, schools, parks, and public transport, without the hustle and bustle. Whether you're commuting, shopping, or heading out for a bite by the bay, everything is within easy reach - making this location a standout for families and investors alike.

This neat and tidy highset home is full of charm and potential. Upstairs, you'll find three generous bedrooms, a large main bathroom, and a spacious open-plan lounge that flows seamlessly into a large kitchen. Sliding doors open onto a sprawling outdoor entertaining area that catches the breeze and overlooks the fully fenced 617sqm block, creating the perfect space for relaxed family living. Downstairs includes a second bathroom, laundry, a single-car garage, a massive multipurpose area, and an additional multipurpose room. Outside, there's a double roller door shed with side access, along with a slim garden shed for extra storage. With room for all the toys, pets, and play, this home truly offers something for everyone.

Features You'll Love:

- 3 bedrooms with ceiling fans
- Bedrooms 1 and 2 with built-in wardrobes
- Spacious lounge and large kitchen
- Side Access
- Renovated main bathroom upstairs + second bathroom downstairs
- Covered outdoor entertaining area overlooking the backyard
- 617sqm block with fully fenced yard and gated side access
- Double roller door shed + single garage under the house (3 secure car spaces)
- Additional multipurpose spaces downstairs
- Garden shed and pet-friendly backyard

Location Highlights:

- 800m to Kippa-Ring Train Station
- 1km to Kippa-Ring Shopping Centre (with Hoyts Cinema)

3 BED | 2 BATH | 3 CAR

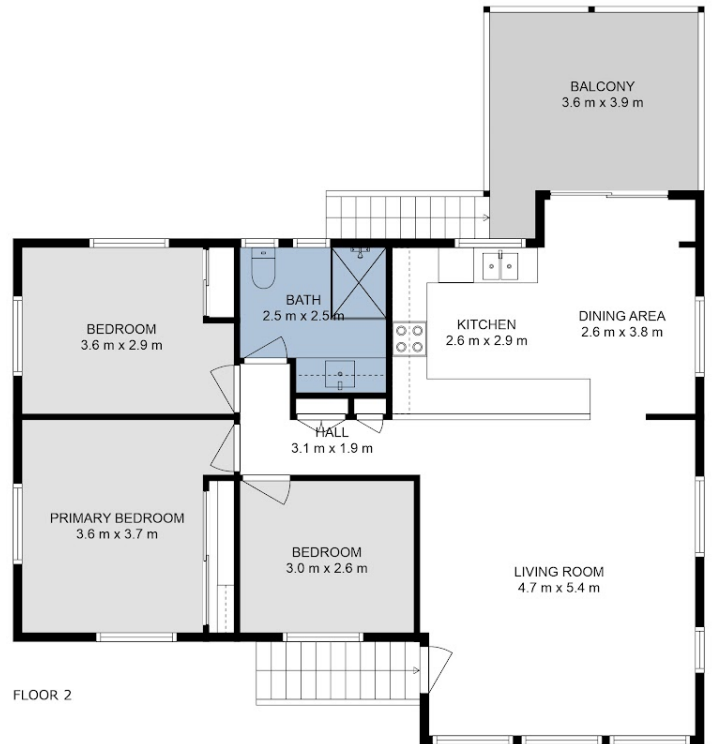
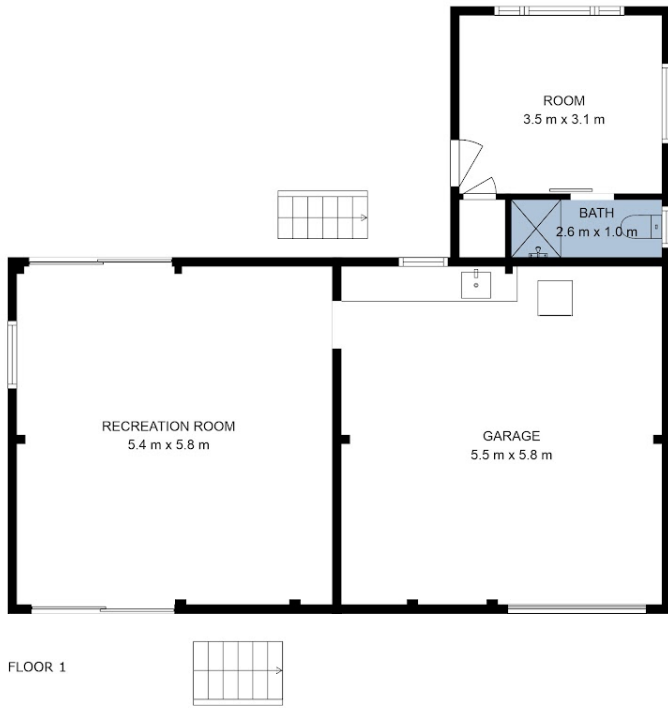
PRICE:
\$880,000

OPEN FOR INSPECTION:
N/A



Paige Creedon
0413402110

paige@creedonpropertygroup.com
creedonpropertygroup.com



This floor plan is intended to give a general indication of the layout only. Sizes & dimensions are approximate, actual may vary.



Disclaimer: Please note this floor plan is for marketing purposes and is to be used as a guide only. All dimensions are estimates only and may not be exact measurements.