



SOLD

FRESHLY UPDATED FAMILY HOME, OWNER COMMITTED TO SALE BEFORE CHRISTMAS. QUALITY 4 BEDROOM FAMILY HOME

Ideal family home, easy care gardens, newly painted and sanded and stained hardwood timber floors, ready for a family to move in and enjoy Christmas in their new home.

Discover the perfect blend of modern style, comfort, and family functionality in this beautifully presented four-bedroom, single-level home in the highly sought-after suburb of Franklin. Positioned on a generous 450m² block, this residence is packed with quality features and thoughtful touches that make everyday living a pleasure.

Step inside and be welcomed by the warmth of natural timber floors throughout, complemented by high 2.7-metre ceilings that enhance the sense of light and space. The heart of the home is the expansive open-plan living and dining area, seamlessly connected to a stunning kitchen boasting premium stone benchtops, matching splash backs, and high-end Miele appliances—a dream for entertainers and home cooks alike.

With 189m² of internal living space, plus a separate formal lounge, spacious bedrooms, and luxurious bathrooms, this home delivers both space and style. Whether you're growing your family or simply want a home that blends elegance with practicality, this one ticks all the boxes.

Standout Features:

- Solid natural timber floors throughout – newly polished and stained
- Soaring 2.7m ceilings in the main living areas
- Designer kitchen with 40mm stone benchtops, stone splashback & pantry
- Miele appliances including 900mm 5-burner gas cooktop, oven & dishwasher
- Spacious master suite with walk-in robe and luxurious ensuite with dual vanities
- Main bathroom with spa bath and floor-to-ceiling tiles
- Freshly painted interiors with a warm, contemporary colour palette
- Ducted gas heating and evaporative cooling for year-round comfort
- Ducted vacuum system for added convenience
- Fully enclosed, low-maintenance garden
- 5,000L rainwater tank

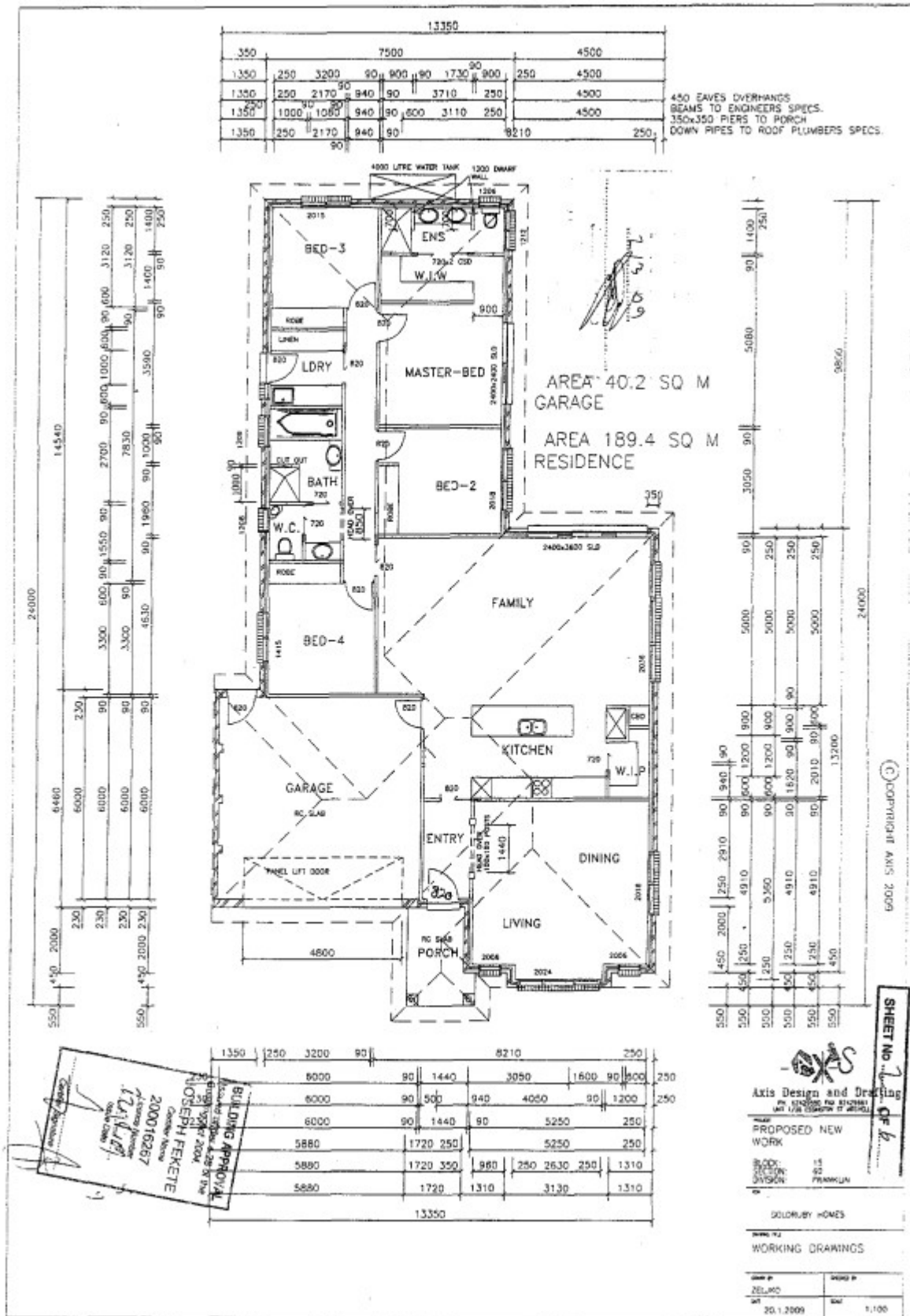
4 BED | 2 BATH | 2 CAR

PRICE:
\$1,195,000

OPEN FOR INSPECTION:
N/A



John Longmire
0412205380
john.longmire@atrealty.com.au
www.atrealty.com.au



Disclaimer: Please note this floor plan is for marketing purposes and is to be used as a guide only. All dimensions are estimates only and may not be exact measurements.