

SOLD

HIDDEN GEM! CHARMING FAMILY HOME WITH DUAL LIVING POTENTIAL

Full of warmth and character, this much loved, well maintained family home sits in an elevated, leafy pocket of Ferny Hills. Whether city or bushland views are your thing, this property has you covered. Add to that the generous back deck overlooking the sparkling inground pool and you have the perfect place to call home.

If dual living potential, separate spaces for all the family, or dedicated work from home or hobby areas are on your wish-list, this may be the perfect property for you. The versatility makes it ideal for families needing extra space, potential dual living arrangements, or a quiet place to work from home.

Key Features Include:

- 3 bedrooms
- 2 bathrooms
- Large rear deck overlooking inground pool
- Downstairs built in with a rumpus and three utility rooms plus second bathroom and laundry/kitchenette
- Perfect for home office, studio or hobby space
- Quiet, family-friendly location surrounded by greenery

Location Highlights:

- School catchments: Patricks Road State & Ferny Grove High Schools
- Transport: Bus stop just around the corner; minutes to Ferny Grove and Grovely train stations
- Convenience: Close to retail, services, dining
- Lifestyle: Nearby walking and cycling trails, George Willmore Park and Ferny Hills Aquatic Centre

For more information, contact Karen Marlow on 0411 033 892. We look forward to welcoming you at one of the upcoming open homes.

This property is being sold by auction or without a price and therefore a price guide can not be provided. The website may have filtered the property into a price bracket for website functionality purposes.

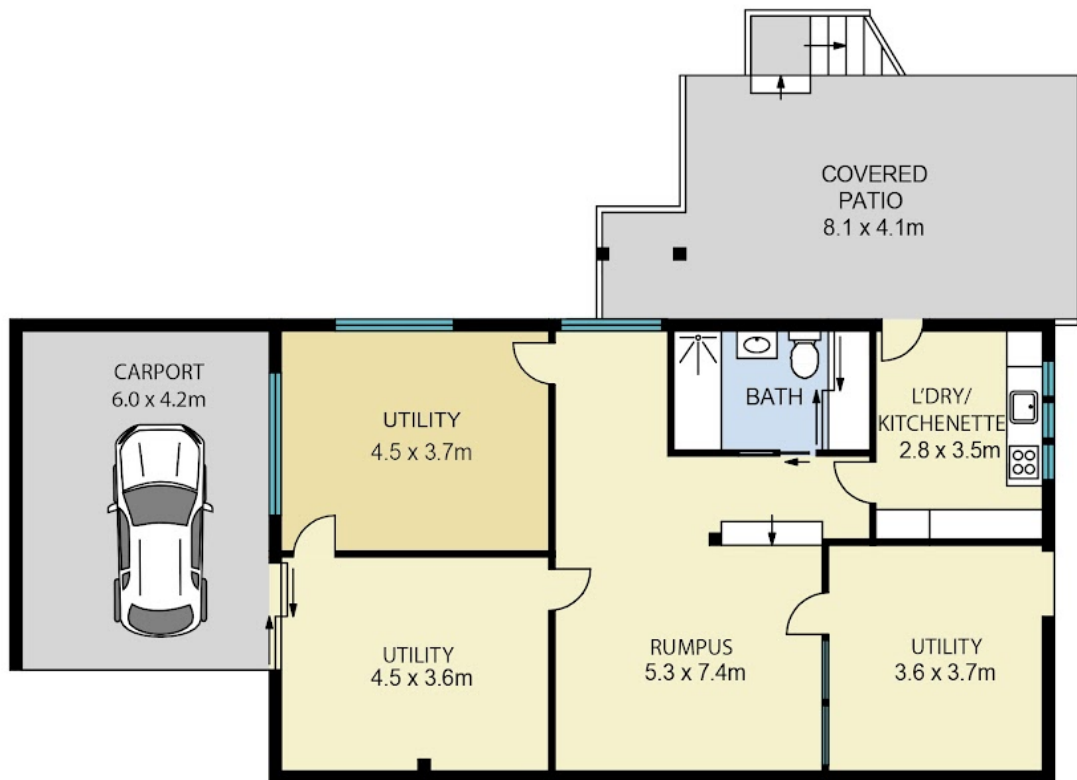
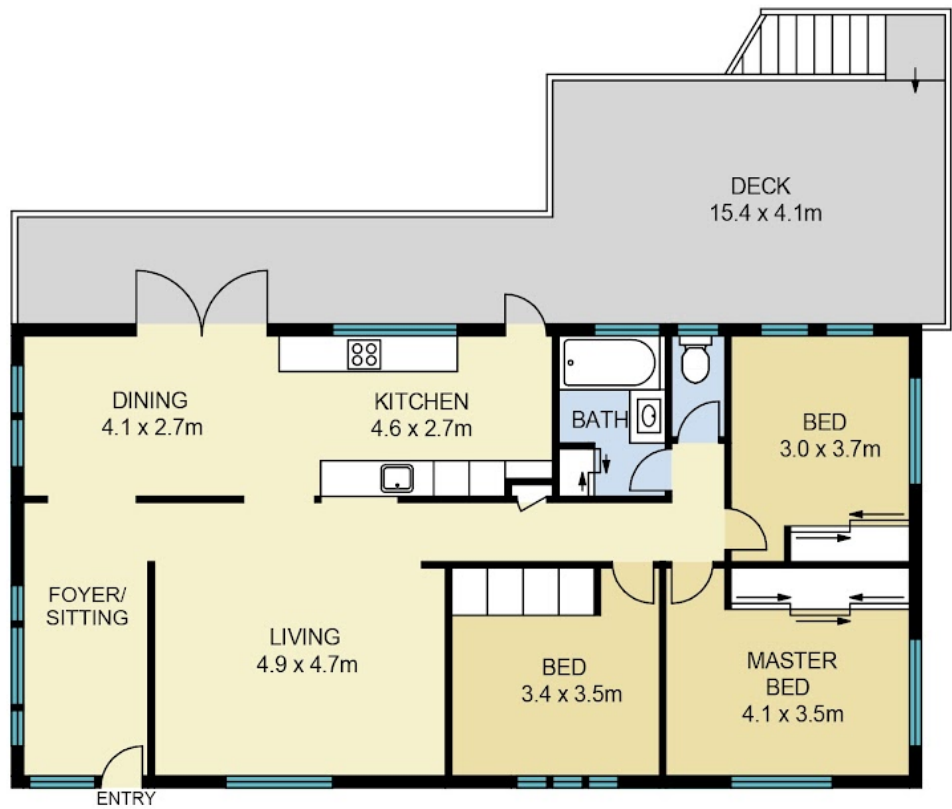
3 BED | 2 BATH | 1 CAR

PRICE:
\$1,253,000

OPEN FOR INSPECTION:
N/A



Karen Marlow
0411033892
karenmarlow@atrealty.com.au
www.atrealty.com.au



Disclaimer: Please note this floor plan is for marketing purposes and is to be used as a guide only. All dimensions are estimates only and may not be exact measurements.

Floor Plans are representative and should be used as a guide only