



SOLD

YOUR DREAM LIFESTYLE AWAITS IN MAPLE GROVE ESTATE

Stop looking! You've just found the one you've been waiting for. This isn't just another new build; this is a flawless, sun-drenched family sanctuary on a prime corner block, offering space, light, and luxury in one of Melbourne's fastest-growing corridors.

INSTANT WOW FROM THE FIRST STEP

Be greeted by a radiant interior flooded with natural light, showcasing modern, high-spec finishes that are as stylish as they are smart.

Here's what makes this property the undisputed star of the market:

- o SPECTACULAR MASTER BED: Escape to your private haven at the front of the home. Featuring a generous walk-in robe and a sleek, modern ensuite because every parent deserves a sanctuary.
- o READY TO MOVE IN Three additional, well-proportioned bedrooms, all fully carpeted with quality blinds and downlights. Unpack your bags and start living it's all done for you.
- o THE HEART OF THE HOME - A CHEF'S KITCHEN: This is where memories are made. Prepare gourmet meals with ease on the 900mm stainless steel cooker, surrounded by stunning Caesarstone benchtops. Ample storage and preparation space make entertaining a joy.
- o SEAMLESS INDOOR-OUTDOOR FLOW: The open-plan living and dining area, with its elegant laminate flooring, spills effortlessly onto a huge decked alfresco area. It's the ultimate stage for summer barbecues, family gatherings, or simply relaxing while watching the kids play in the easy-care, low-maintenance gardens.

This is the lock-up-and-leave, entertainer's dream you've been working for.

Don't just buy a house, invest in a lifestyle. With immense growth, fantastic amenities, and a thriving community, Pakenham isn't just a great place to live it's a brilliant place to invest, 500 metres to the station, only short distance from princes highway and amenities.

4 BED | 2 BATH | 2 CAR

PRICE:
\$690,000

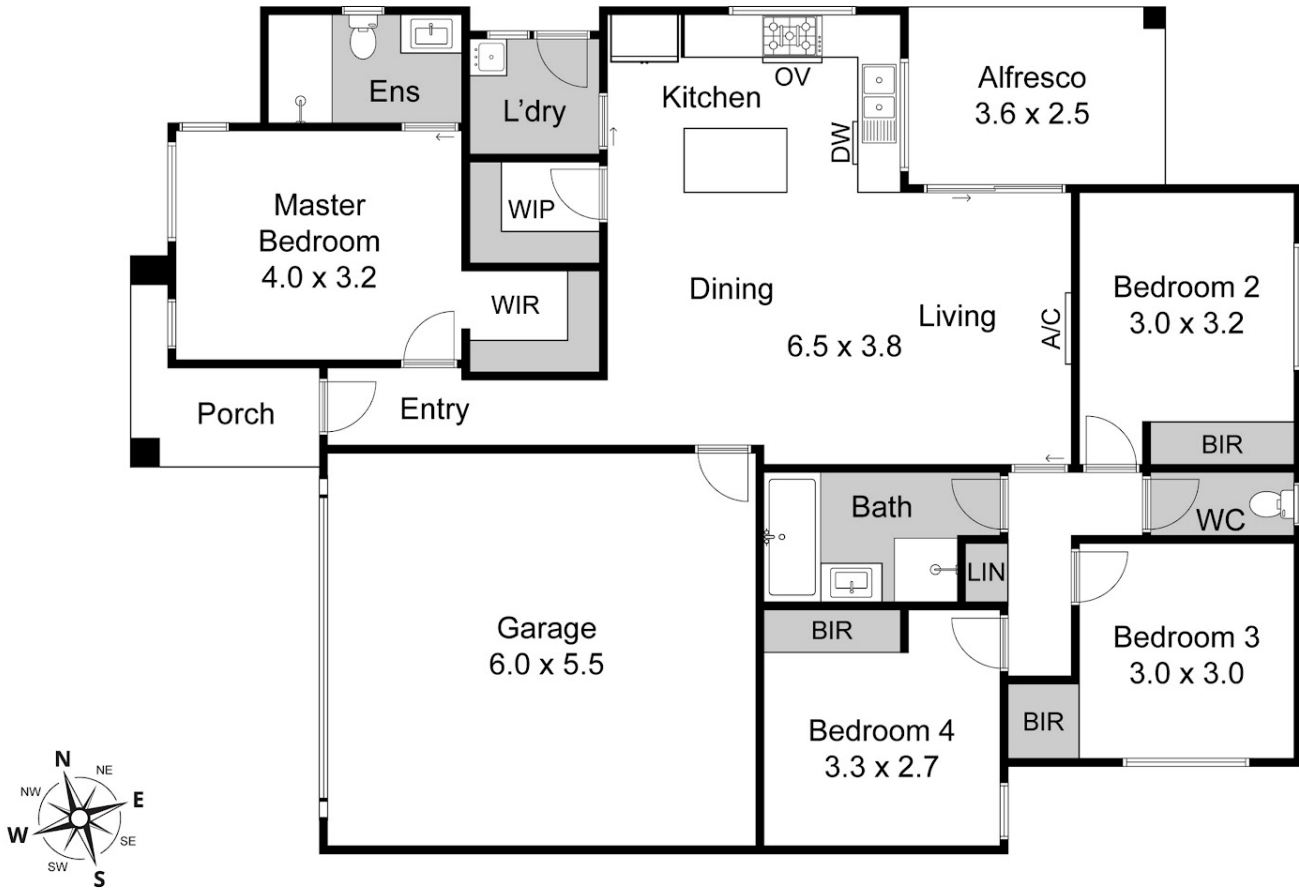
OPEN FOR INSPECTION:
N/A



Roger Nissanka
0406271004

roger@atrealty.com.au

rogers-realestate.com.au



Disclaimer: Please note this floor plan is for marketing purposes and is to be used as a guide only. All dimensions are estimates only and may not be exact measurements.