

**SOLD**

## BAYSIDE BEAUTY - LIFESTYLE PLUS

This executive, high end and luxurious unit suits first home buyers, downsizers and astute investors.

Ideal for those who value a quality finish with fixtures and fittings, prime location walking distance to the village to embrace the cafe/restaurant lifestyle and cute boutiques.

Beachside bliss for those who enjoy an active/outdoor type of life and extremely low maintenance living.

Open plan and spacious, this third floor apartment (with lift) boasts the best of indoor/outdoor living with a private balcony situated off the light and bright living area.

The central kitchen is a chef's delight with stone bench tops and stainless steel appliances.

Two double bedrooms each with built in robes and two modern and trendy bathrooms make this apartment a wonderful place to call home.

There is security undercover parking with internal access for peace of mind and comfort.

Excellent opportunity to be in your new home before Christmas so don't hesitate and inspect today to appreciate all it has to offer

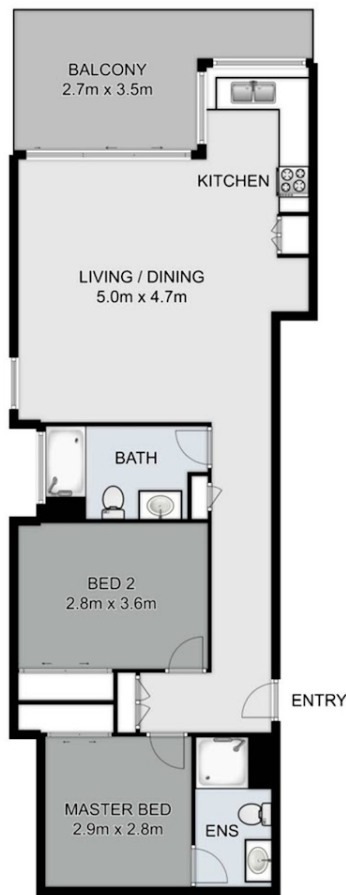
**2 BED | 2 BATH | 1 CAR**

**PRICE:**  
\$740,000

**OPEN FOR INSPECTION:**  
N/A



**Sandra Sherratt**  
0411298493  
sandrasherratt@atrealty.com.au  
[www.atrealty.com.au](http://www.atrealty.com.au)



**15/51 EMSWORTH STREET,  
WYNNUM**

INTERNAL AREA 71 sqm  
EXTERNAL AREA 25 sqm  
TOTAL BUILDING AREA 96 sqm approx.

*This plan is for illustrative purposes only. All areas, dimensions and fittings are approximate. Plants are decorative only. Floor Plan by Listing Media.*

Disclaimer: Please note this floor plan is for marketing purposes and is to be used as a guide only. All dimensions are estimates only and may not be exact measurements.