

FOR SALE

A HIDDEN YORK BAY ESCAPE

Priced from \$950,000

Your hidden York Bay escape, a private retreat surrounded by bush, sunshine and harbour views.

Set on a secluded section with a double garage and a flat lower area (currently a mini market garden), this property also offers the possibility for a small future home — ideal for extended family, guests or extra flexibility over time.

Inside, the home offers flexible family living across two levels. The entry level includes a separate office and laundry with its own shower — perfect for working from home, teenagers needing space, or simply spreading out.

Upstairs is where the home really comes into its own. The main living level features three distinct spaces — ideal for family time together or quiet moments soaking up the sun. The kitchen sits at the heart of the home, with dining and two adjoining living areas flowing out to a deck that captures harbour views while remaining nicely sheltered.

With exposed timber ceilings and a warm retro feel (more sixties than eighties), the home feels cosy, relaxed and inviting — a place to truly unwind.

Four generous bedrooms are spread across the two levels, along with a well-appointed family bathroom and separate WC on the living level, ensuring there's room for everyone.

Life here feels peaceful and tucked away, yet it's all so accessible — an easy walk to the bus stop, a short trip to Days Bay for the ferry into the city, bush tracks right on your doorstep, and Eastbourne village just minutes away.

Luxe Highlights:

- * Double garage and two utility rooms
- * Separate office
- * Ducted heating
- * Quiet, private setting
- * Abundant birdlife and bush surrounds

4 BED | 2 BATH | 2 CAR

PRICE:

Enquiries Over \$950,000

OPEN FOR INSPECTION:

May 31 at 1:15pm - 1:45pm

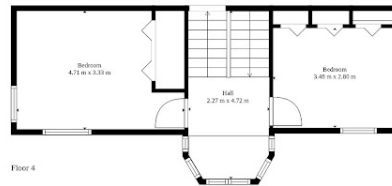
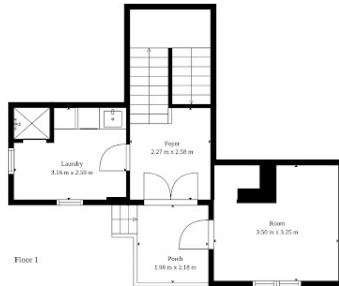
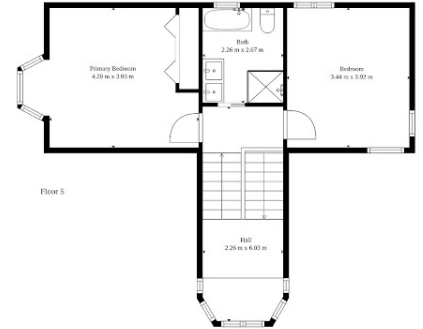
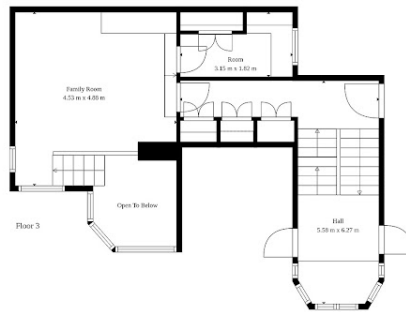
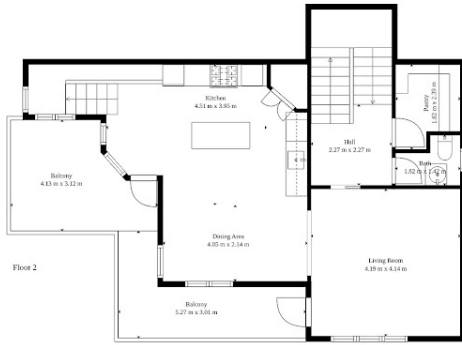


Mike Lovell

0274356007

mike@luxerealty.co.nz

www.luxerealty.co.nz



Measurements are indicative only

19 Kaitawa Road
York Bay

Disclaimer: Please note this floor plan is for marketing purposes and is to be used as a guide only. All dimensions are estimates only and may not be exact measurements.