

SOLD

LIFESTYLE AND ENTERTAINING IN MOSSFIEL ESTATE

Perfectly positioned in the sought-after Mossfiel Estate, this versatile family home is designed for comfort, entertainment, and convenience. Offering four bedrooms plus a study, three bathrooms, and multiple living zones, this home caters to modern family life in a convenient location.

The well-appointed kitchen flows seamlessly into the dining and living areas, while polished Tasmanian Oak floors bring warmth and character throughout. Upstairs, the bedrooms include a master with an ensuite and built-in robes in every room, providing plenty of storage for the whole family.

Step outside and discover a massive outdoor entertainment space, perfect for hosting gatherings or simply relaxing in a low-maintenance setting. With a double garage and a carport accommodating up to four vehicles, there's no shortage of parking!

Located within walking distance to Pacific Werribee, Hogan's Corner, local schools and Mossfiel Reserve, this property combines lifestyle and convenience in one of Hoppers Crossing's most desirable pockets.

Ideal for young families and entertainers seeking quality and location, this home is a standout opportunity you won't want to miss.

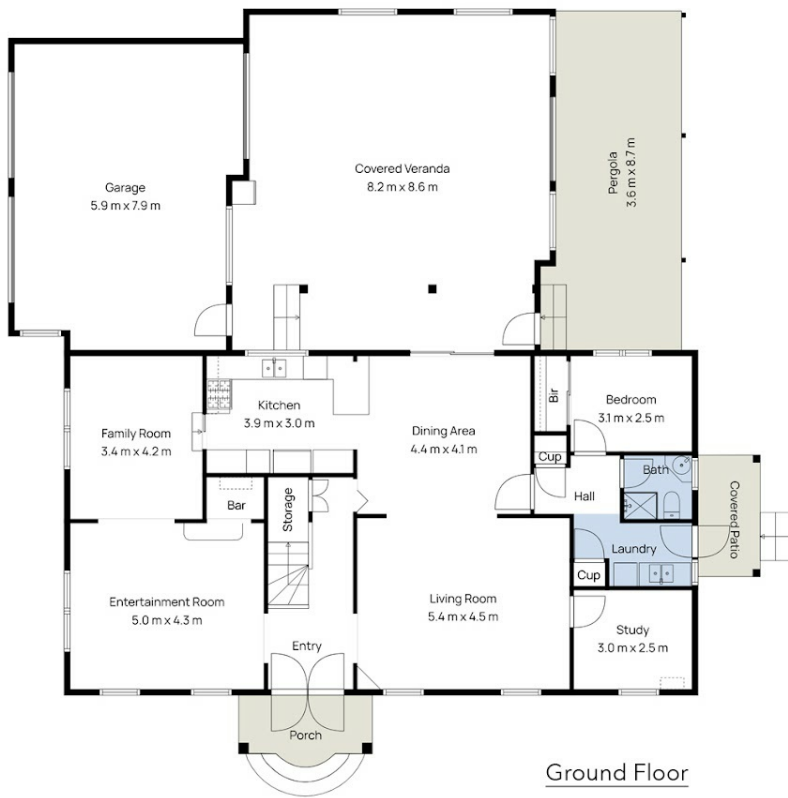
4 BED | 3 BATH | 4 CAR

PRICE:
\$865,000

OPEN FOR INSPECTION:
N/A



Samuel Hogan
0401315234
samuel@atrealty.com.au
www.atrealty.com.au



14 Hughes St, Hoppers Crossing

Whilst every attempt has been made to ensure the accuracy of the floor plan contained here, measurements of doors, windows, rooms and any other items are approximate and no responsibility is taken for any error, omission, or mis-statement. This plan is for illustrative purposes only and should be used as such by any prospective purchaser. The services, systems and appliances shown have not been tested and no guarantee as to their operability or efficiency can be given.



Disclaimer: Please note this floor plan is for marketing purposes and is to be used as a guide only. All dimensions are estimates only and may not be exact measurements.