



FOR SALE

CHARMING 3-BEDROOM HOME WITH SPACE, COMFORT, AND ENDLESS EXTRAS

Discover a home that combines practical living with plenty of room to enjoy. Featuring three bedrooms, a bathroom, and two living areas, this property is designed for both comfort and functionality. A double carport and a massive shed provide space for vehicles, projects, or storage.

The interior is bright and clean, featuring neutral décor that allows you to make the space your own. Enjoy energy efficiency with 3kW solar, ducted gas heating, and two split systems keeping the home comfortable year-round.

Step outside to a large undercover decked area - perfect for entertaining or relaxing while enjoying the beautiful gardens. The outdoor space also includes raised veggie patches and fruitful trees, ideal for green thumbs.

With so many extras throughout, this home is ready to welcome its next family.

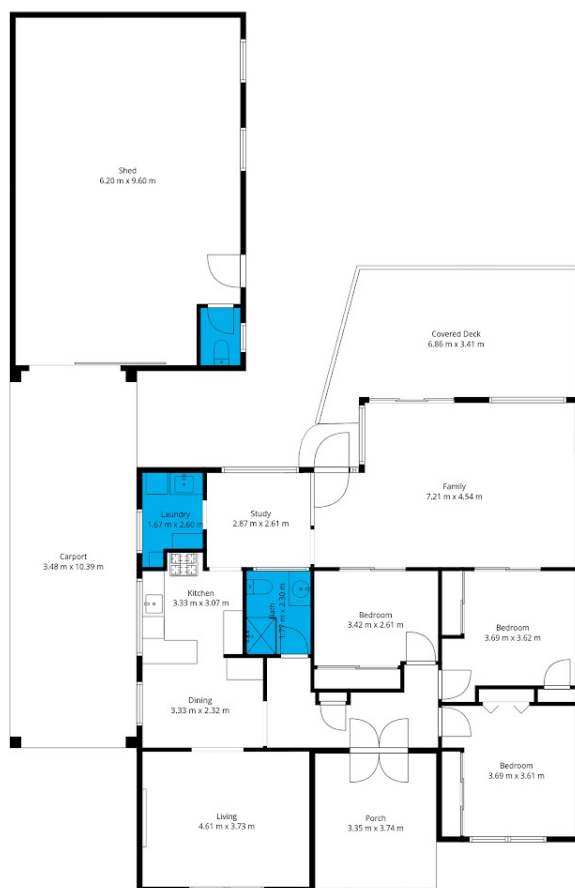
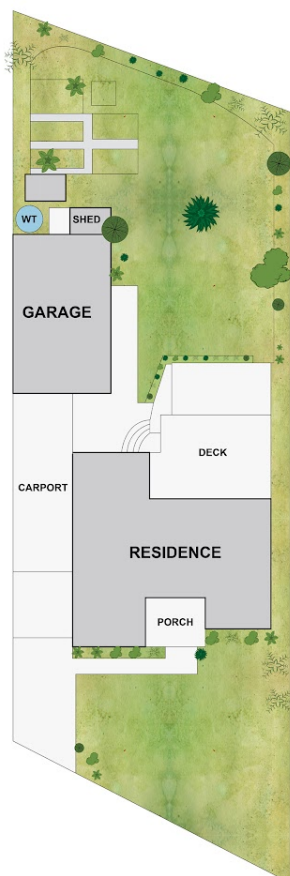
3 BED | 1 BATH | 4 CAR

PRICE:
\$490,000 - \$539,000

OPEN FOR INSPECTION:
N/A



Jeff Dalzotto
0411601046
jeffd@atrealty.com.au
atrealtypropertysalesgippsland.com.au



32 Shannahan Parade, Newborough

Whilst every attempt has been made to ensure the accuracy of the floorplan contained here all measurements are approximate and are for illustration purposes only. No responsibility is taken for any error, omission or misstatement.

LIVING 14.10 sqs



Disclaimer: Please note this floor plan is for marketing purposes and is to be used as a guide only. All dimensions are estimates only and may not be exact measurements.