

FOR SALE

SPACIOUS APARTMENT WITH REAR GARDEN

Nestled in the heart of coastal paradise, this stunning three-bedroom apartment at 12/5 Crag Road offers the perfect blend of modern luxury and seaside tranquility in beautiful Batehaven. Just 4 kilometres from the vibrant hub of Batemans Bay, this double-storey residence presents an exceptional opportunity for those seeking a premium coastal lifestyle.

- Double-storey design maximising space and privacy
- Remote garage accommodation for two vehicles plus storage
- Ensuite spa for ultimate relaxation and wellness

The outdoor spaces truly set this property apart from the rest. A private deck extends your living space outdoors, perfect for morning coffee while watching the sunrise. The outdoor entertainment area becomes the focal point for gatherings with family and friends, whether you're hosting intimate dinners or larger celebrations under the stars.

Rates \$667 pq Strata \$1,186 pq

Features: Filtered water views - Private rear courtyard with awning - Renovated kitchen - Smeg dishwasher
Fisher & Paykel oven - Induction cooking - Quality curtains & shutters - Large entertaining balcony
2 x split system A/C - Tandem double garage - Internal access - Stair chair lift - Garage extra storage
Garden water reticulation system - NBN

3 BED | 2 BATH | 2 CAR

PRICE:
\$850,000

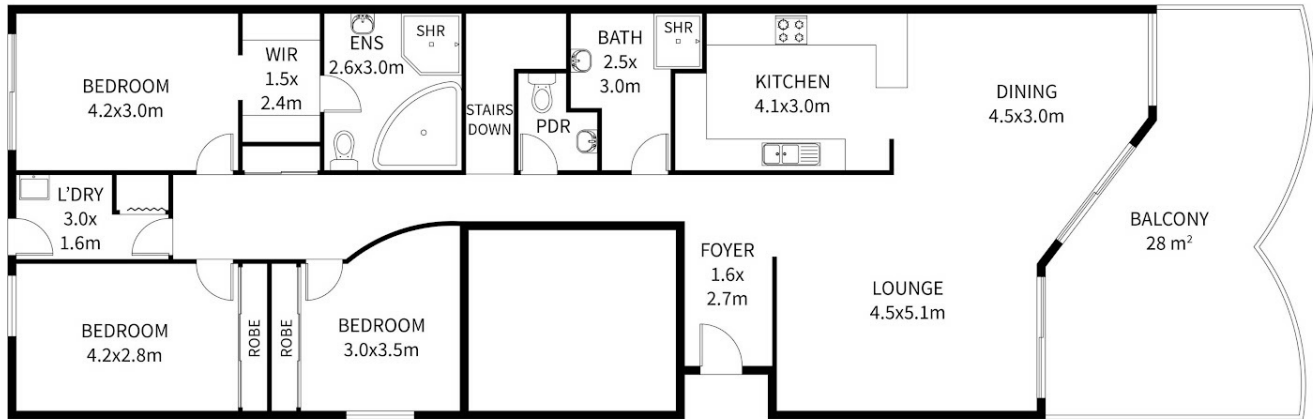
OPEN FOR INSPECTION:
N/A



Greg Robson
0407773881
gregrobson@atrealty.com.au
www.atrealty.com.au



GROUND LEVEL



UPPER LEVEL

This floor plan including furniture, fixture measurements and dimensions are approximate and for illustrative purposes only. All enquiries must be directed to the agent, vendor or party representing this floor plan.

12/5 Crag Road Batehaven NSW 2536



Disclaimer: Please note this floor plan is for marketing purposes and is to be used as a guide only. All dimensions are estimates only and may not be exact measurements.