

SOLD

CONVENIENT FAMILY LIVING IN A PRIME TARNEIT POCKET

22 Isabella Way, Tarneit presents an exceptional opportunity to secure a beautifully updated, family-friendly home set on a spacious 478m² (approx.) block with an impressive 18m frontage. With generous proportions, multiple living areas, and quality upgrades throughout, this home is ideal for growing families, entertainers, or savvy investors.

Property Highlights:

Four spacious bedrooms, including:

Master suite with his and her walk-in wardrobes and private ensuite

Three additional bedrooms with mirrored built-in wardrobes

Two generous living zones, perfect for flexibility and entertaining:

Open-plan living/dining area filled with natural light from a central skylight

A separate formal lounge at the front – ideal for a theatre room, kids' retreat, or home office

Modern upgrades throughout, including:

Brand new carpets, fresh paint, and stylish new blinds

Skylight to enhance natural light

Ducted heating and split system air conditioning for year-round comfort

Contemporary kitchen with ample storage and a functional layout overlooking the main living zone

Extended pergola – ideal for outdoor dining, entertaining guests, or weekend relaxation

4 BED | 2 BATH | 2 CAR

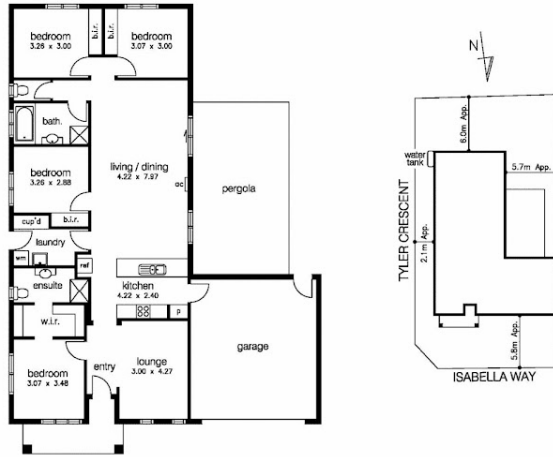
PRICE:
\$670,000

OPEN FOR INSPECTION:
N/A



Mickey Grover
0450168887
mickeygrover@atrealty.com.au
www.atrealty.com.au

22 ISABELLA WAY, TARNEIT



Disclaimer: Please note this floor plan is for marketing purposes and is to be used as a guide only. All dimensions are estimates only and may not be exact measurements.