



SOLD

TWO BEDROOM CORNER PROPERTY IN VERY QUIET AREA OF THE VILLAGE - LARGE RV PORT.

This is one for the traveller or just your final special piece of paradise, with two large bedrooms and bathroom with separate toilet and carport plus large RV port, this is a must see home! Some main features are:

- + Large corner property with north/south facing RV port on east side.
- + Entrance via front covered deck to open plan lounge, dining and kitchen with raked ceilings, modern tiled kitchen and dining areas, double sink and dishwasher, gas hob, electric oven, drawers and cupboards.
- + Alloy wind-out shutters.
- + Carpet in lounge area with fan and modern reverse cycle air conditioning.
- + Bedroom one has built-in wardrobes with carpet, ceiling fan and air conditioning.
- + Bedroom two is also carpeted with built-in wardrobe. (Currently office).
- + The tiled bathroom also has a separate toilet.
- + Tiled laundry and linen cupboard with door to outside with built in dog door.
- + Large L shaped covered timber deck to the south and west side.
- + Shed at rear with power 3.2 x 3.2 approx. plus large rainwater tank, clothes line and a dog fence.

This award winning pet friendly R V Park Village for the over 50s has many amenities with swimming pool, men's shed, large BBQ areas, 300 acres of land, 8 ball pool hall, a 9 hole pitch and putt golf course, art and craft room, library, games room and more!

Plus No stamp duty, no Council, sewage or rubbish collection fees.

No incoming or outgoing fees and no hidden fees. Conveyancing fees all included.

Walk to town with Centrelink, 24 hour emergency hospital, Aldi, Coles, Woolies and all other facilities available.

Inspect one of the best presented homes in the village.

Call Murgha on 0414 666 970

2 BED | 1 BATH | 2 CAR

PRICE:
\$395,000

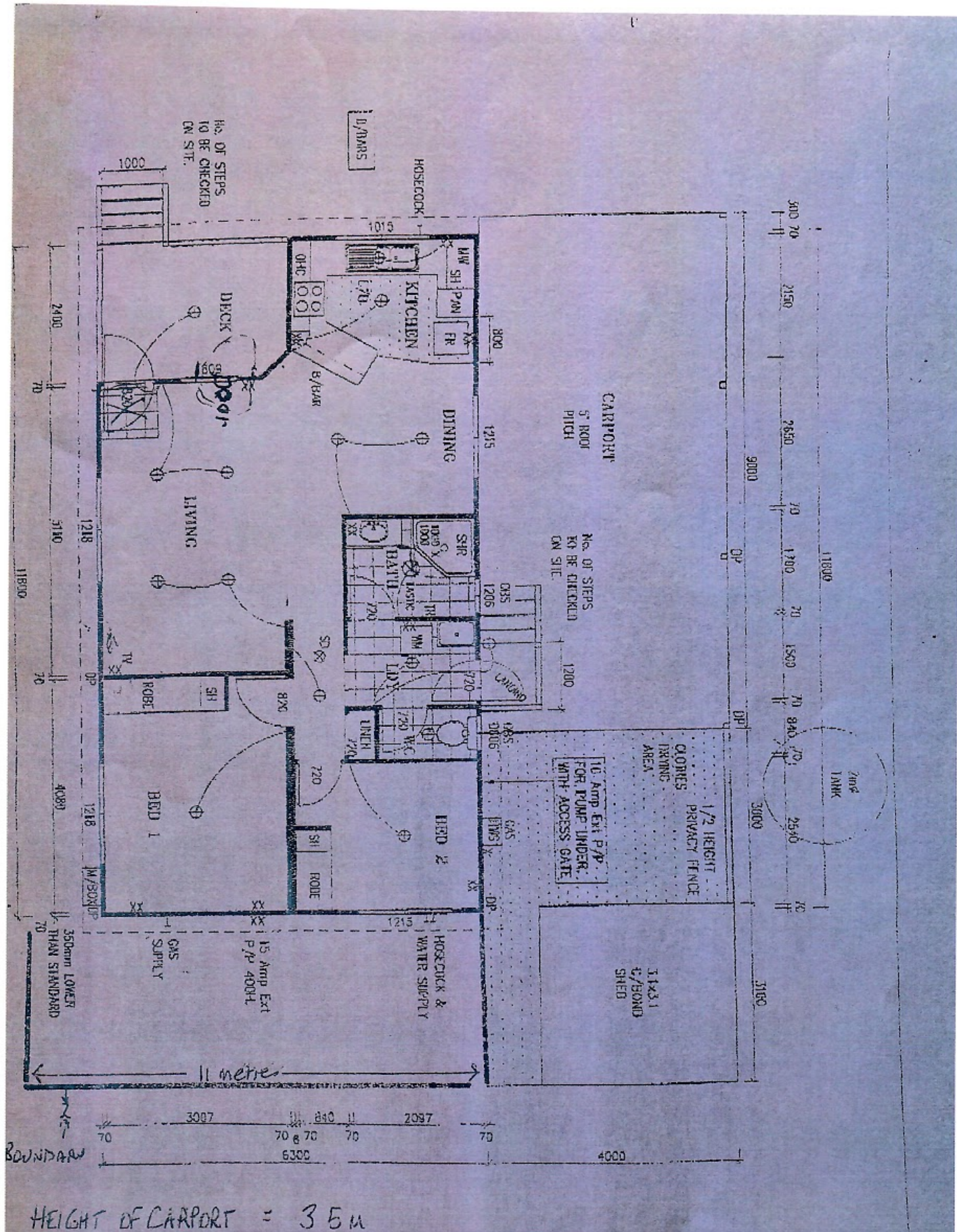
OPEN FOR INSPECTION:
N/A



Murgha Mack
0414666970

murghamack@atrealty.com.au

www.atrealty.com.au



Disclaimer: Please note this floor plan is for marketing purposes and is to be used as a guide only. All dimensions are estimates only and may not be exact measurements.

Murgha Mack
 0414666970
 murghamack@atrealty.com.au
 www.atrealty.com.au



