

SOLD

GRAND COUNTRY STYLE HOME!!

HUGE PRICE REDUTION - OWNERS WANT SOLD!!

Occasionally, a property comes along that you've always dreamed of living in — but it never makes it to the market. Well, now is your chance to experience it for yourself. Take a step back in time when you enter this beautifully presented home on a huge 1592m2 block. With raw cypress timber floors and 9ft ceilings, it has all the charm and character you expect in a country home. There are three spacious bedrooms with a sleepout that has been converted into a fourth bedroom, two of which have built-in wardrobes. The lounge room has a fireplace to keep you cozy in winter and a reverse cycle air conditioner to cater to the warmer weather. The kitchen has a large freestanding gas oven and cooktop with a dishwasher and pantry. The house has been rewired, and all of the windows have been replaced in recent years. The gardens have been beautifully landscaped with an established vegetable patch, manicured lawns, and six rainwater tanks that can be used for the garden or the home. There is a four-bay lockable colorbond shed in the backyard with three-phase power and a carport. Alfresco dining can be enjoyed in multiple outdoor settings.

The property, located in Pittsworth, is situated in the heart of the Darling Downs in a rural community, surrounded by various agricultural industries, including grain, cotton, cattle and dairy farms. It is approximately 40km west of Toowoomba and within a 2-3 hour scenic drive to Brisbane and the Sunshine and Gold Coasts. Shops including Woolworths, schools and parks are close by within a short 10-minute walking distance. There is also the convenience of a bus service that runs daily into Toowoomba for shopping and private schools.

Features include:

- Fireplace
- 9ft Ceilings
- Large Laundry
- Fully fenced yard
- 18 x Solar panels
- Three-phase power
- Solar hot water system
- Security Screens doors
- Cypress pine timber floors
- Reverse Cycle Air Conditioner
- 4 Bay Powered Colorbond Shed

3 BED | 1 BATH | 5 CAR

PRICE:
\$640,000

OPEN FOR INSPECTION:
N/A



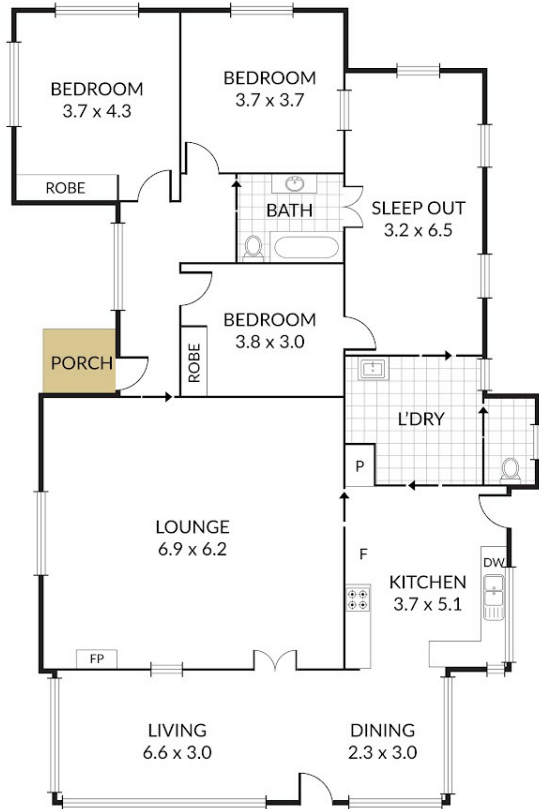
Robert Cox
0422841777
robertcox@atrealty.com.au
Tyme Real Estate

Internal 180m² External 113m² Total 293m²

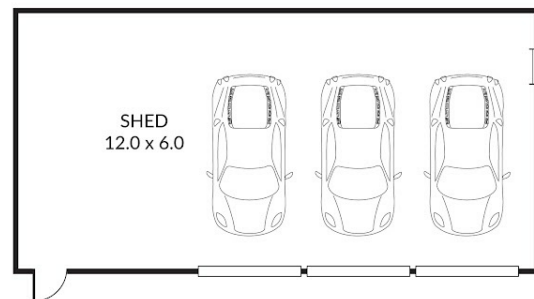
5 Edward Street, **Pittsworth**



4 x 1 x 4 x



(NOT IN POSITION)



NOTE: Every precaution has been taken to verify the accuracy of the above details. However, prospective purchasers are advised to make their own enquiries.

Disclaimer: Please note this floor plan is for marketing purposes and is to be used as a guide only. All dimensions are estimates only and may not be exact measurements.

Robert Cox
0422841777
robertcox@atrealty.com.au
Tyme Real Estate

