



FOR LEASE

FRESHLY RENOVATED DUAL-LIVING HOME IN THE HEART OF TOWN

Perfectly positioned in the heart of Nambucca Heads, this freshly renovated home combines space, flexibility, and coastal convenience — just a short walk to beaches, the river, cafés, and shops.

Step inside to discover beautifully resurfaced timber floors, fresh paint throughout, and two distinct living areas, each with their own facilities — ideal for dual living, extended family, or shared accommodation.

Set on a generous block, the home enjoys a large backyard perfect for kids, pets, or relaxed outdoor entertaining. Rear lane access provides convenient off-street parking.

Property Highlights:

- Freshly painted interiors
- Resurfaced timber floors
- Two separate self-contained living areas
- Spacious backyard
- Rear access with off-street parking
- Walk to beaches, river, shops & cafés

This is a rare opportunity to secure a move-in-ready home in one of Nambucca's most convenient locations — offering flexibility, lifestyle, and character all in one.

TO INSPECT OR APPLY:

It's important to register your interest in any upcoming and advertised open homes or inspections. Failing to register may result in not being informed of any unforeseen or unplanned changes to inspection times. To register (or apply) for this property please click on the get in touch button and send your details to our agency. You'll receive an email back with instructions on how to register and apply via our website and booking service.

We do NOT accept 1Form, Ignite, 2Apply or any other online type of tenancy application form. You must apply using the the provided application link sent to you once you enquire.

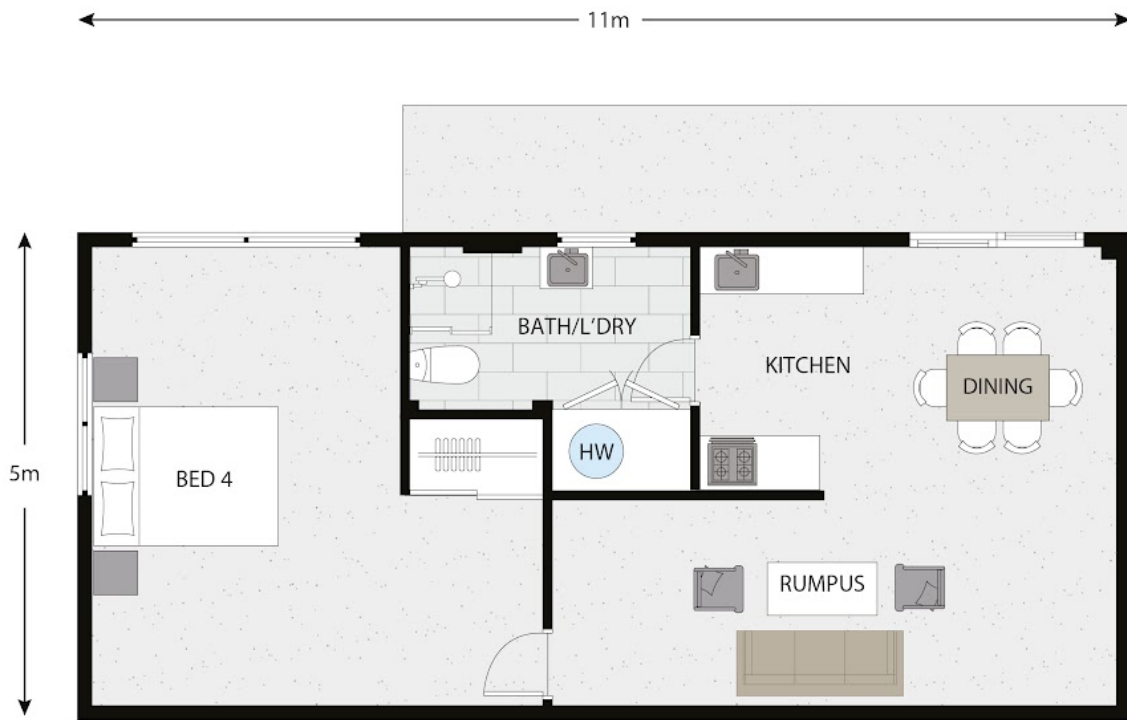
4 BED | 2 BATH | 0 CAR

PRICE:
\$750 per week

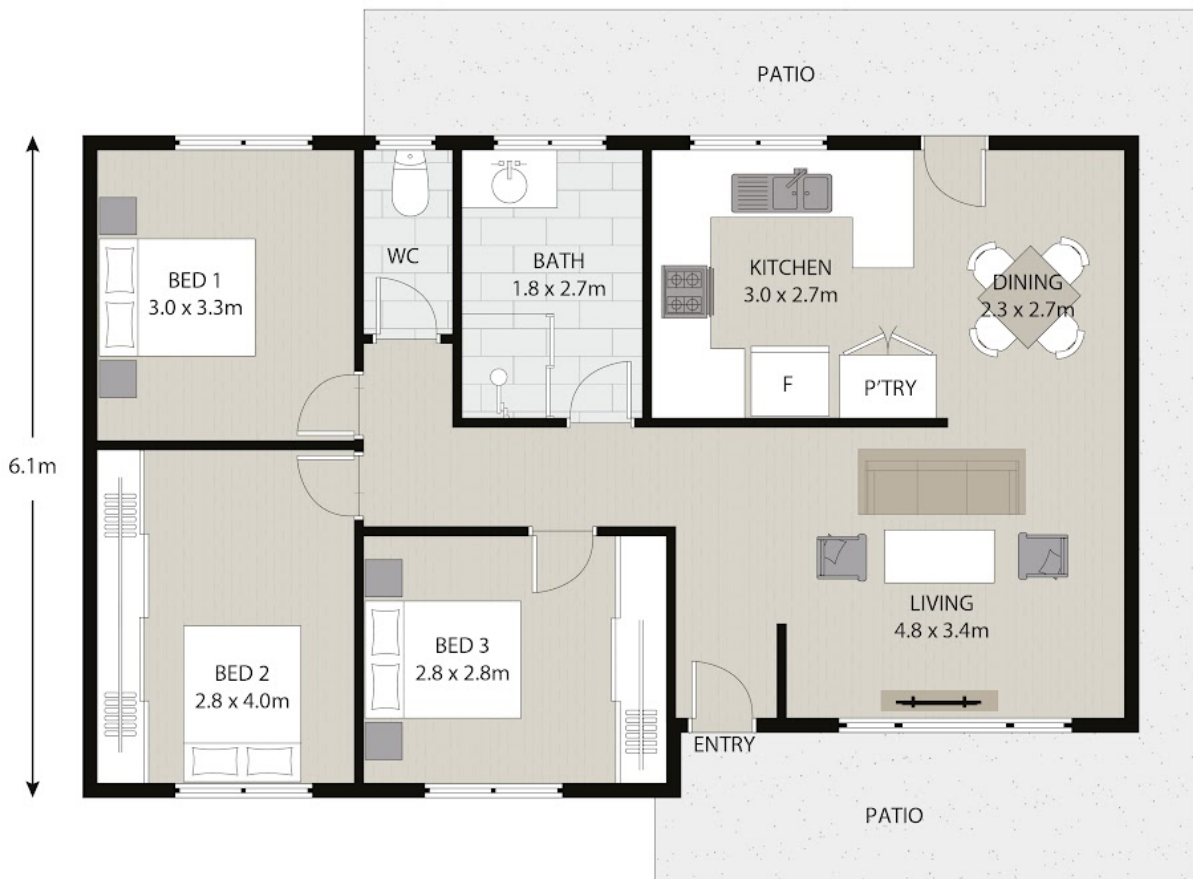
OPEN FOR INSPECTION:
N/A



Simon McPherson
0432073130
simonmcpherson@atrealty.com.au
www.atrealty.com.au



LOWER FLOOR



MAIN FLOOR

Disclaimer: Please note this floor plan is for marketing purposes and is to be used as a guide only. All dimensions are estimates only and may not be exact measurements.



All information contained in this document is from sources we believe to be accurate, however we cannot guarantee its accuracy. Interested persons should make and rely on their own enquiries in relation to measurements, dimensions, layout, furniture and descriptions.