



# SOLD

## SOLD

Nestled on a generous 727 square meter block with stunning lake, valley, and hill aspects, this impressive double-storey family home at 127 Seebeck Road offers the perfect blend of space, comfort, and natural beauty in one of Rowville's most desirable locations. With five bedrooms, two bathrooms, and two living areas, this residence is designed for growing families who value both privacy and togetherness.

Step inside to discover thoughtfully designed interiors that flow seamlessly across two levels, creating distinct zones for relaxation and entertainment. The home's dual living areas provide flexibility for family life, whether you're hosting gatherings or seeking quiet retreat spaces. Air conditioning ensures year-round comfort, while the thoughtful layout maximizes both natural light and the breathtaking views that surround the property.

The heart of family life extends beautifully outdoors, where multiple entertaining options await. A deck provides the perfect setting for morning coffee while taking in those spectacular vistas, while a balcony offers an elevated perspective of the surrounding landscape. The fully fenced property ensures privacy and security, making it ideal for children and pets to play safely.

Practical features enhance everyday living with a double garage providing secure parking and storage, complemented by additional sheds for all your storage needs. The generous land size offers plenty of room for gardens, play areas, or future improvements, all while maintaining that essential connection to nature that makes this location so special.

Rowville's family-friendly reputation shines through its excellent educational facilities, with four quality primary schools and Rowville Secondary College's dual campuses ensuring educational needs are well covered. The suburb's commitment to community is evident through events like the annual Stringybark Festival, which draws over 25,000 visitors and showcases the area's sustainability focus.

Shopping and amenities are exceptionally convenient, with Stud Park Shopping Centre just minutes away offering major retailers including Coles, Woolworths, and Kmart, plus over 60 specialty stores. Wellington Village and Rowville Lakes shopping centres provide additional retail options, ensuring all daily needs are easily met.

- Three golf courses within Rowville for weekend recreation

5 BED | 2 BATH | 2 CAR

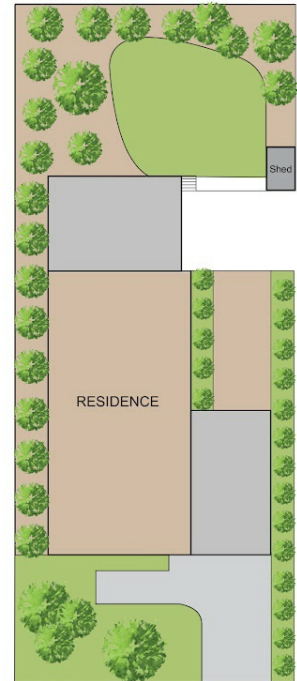
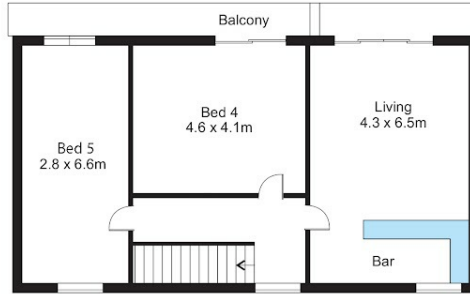
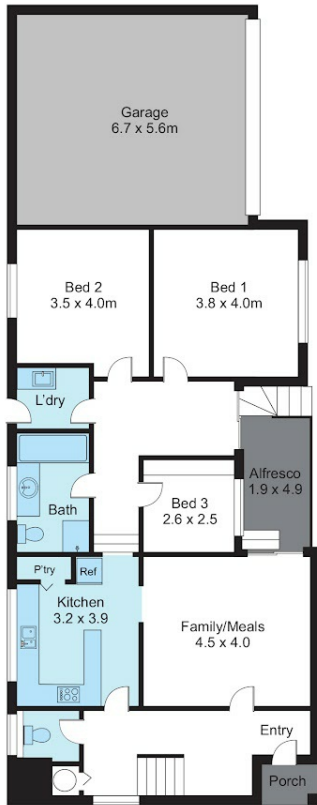
PRICE:  
\$920,000

OPEN FOR INSPECTION:  
N/A



**Sean Singh**  
**0468491676**  
sean@atrealty.com.au  
[www.atrealty.com.au](http://www.atrealty.com.au)

# 127 Seebeck Road, Rowille



Dimensions are approximate measurements we can not guarantee its accuracy. No liability will accepted for any misinformation.

Disclaimer: Please note this floor plan is for marketing purposes and is to be used as a guide only. All dimensions are estimates only and may not be exact measurements.