



**SOLD**

**\* UNDER OFFER BY MULTIPLE OFFERS\* \*MORE PROPERTIES WANTED\***

Experience the ultimate in modern, low-maintenance family living in this impeccably presented double-storey home, built in 2011 on a generous 500m<sup>2</sup> green-title block. Perfectly positioned backing onto a serene green park with a playground, this executive property offers both luxury and an unbeatable location.

**Property Highlights:**

- Ground Floor: Spacious master suite with his-and-hers walk-in robes and a luxurious ensuite. As well as a powder room. Also features a large home theatre.
- Upper Floor: A versatile separate living area with a kitchenette, a main bathroom, a toilet, and five large bedrooms—ideal for a teenager's retreat, guest suite, or large family.
- Quality Build: Constructed in 2011 with high-end finishes including LED downlights and solid Jarrah flooring. All bedrooms are carpeted; ducted air-conditioning for year-round comfort. Total area 332.89m<sup>2</sup>.
- Parking space: Large double garage with drive-through access for a caravan/boat/trailer. Plenty of paved parking for up to 8 cars, a total of 10 car parking spaces.

Walk to shops, catch a train to the city, or take a short drive to stunning beaches!

**6 BED | 2 BATH | 2 CAR**

**PRICE:**  
**\$1,720,000**

**OPEN FOR INSPECTION:**  
**N/A**



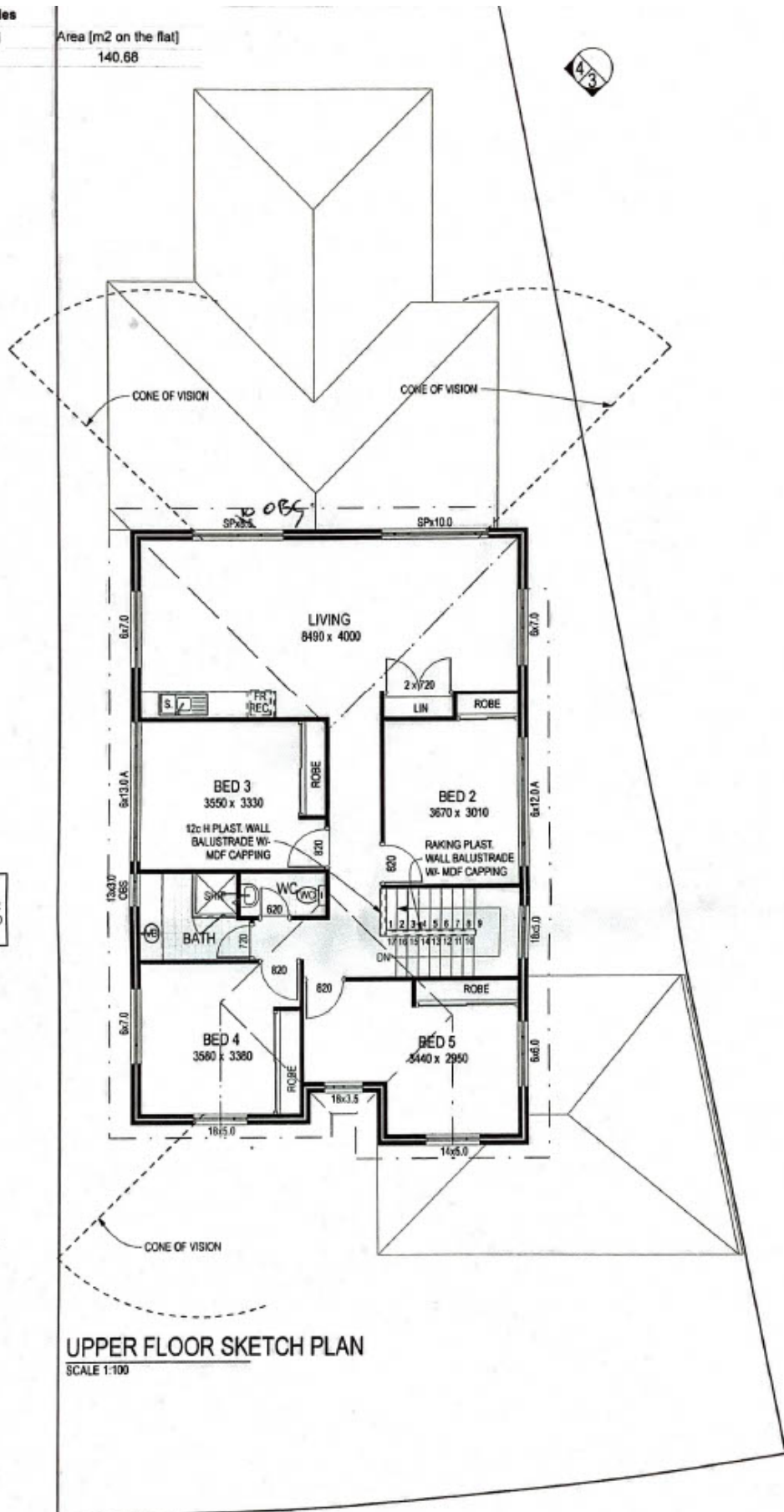
**Linda Lee**  
**0448699988**  
linda.lee@atrealty.com.au  
[www.atrealty.com.au](http://www.atrealty.com.au)

Upper Floor Roof Quantities

Material Type	Surface [m2 on the rake]	Area [m2 on the flat]
Roof - Metal	154.87	140.68



**NOTE:**  
 CODES VARIATION REQUIRED FOR OVERLOOKING TO BED 4 & LIVING-SUBJECT TO COUNCIL APPROVAL



**UPPER FLOOR SKETCH PLAN**  
 SCALE 1:100

Disclaimer: Please note this floor plan is for marketing purposes and is to be used as a guide only. All dimensions are estimates only and may not be exact measurements.