



SOLD

BRILLIANT VIEWS, PRIVACY AND PERFECT POSITION TO BEACHES, SHOPS AND SCHOOLS

A rare chance to secure a quality home in one of Hobart's most sought-after suburbs – lifestyle, location and views all in one package. Perched in one of Bellerive's most sought-after pockets, this solid, well-built family home offers comfort, space and unbeatable lifestyle appeal. From the moment you arrive, you'll be captivated by the sweeping river views that stretch across the sparkling Derwent – the perfect backdrop for relaxed family living or entertaining. Featuring 3 to 4 bedrooms, this versatile home adapts to your family's needs, whether it's an extra bedroom, home office or hobby space. A double garage provides secure parking and ample storage, while the home itself has been built to last – a testament to quality craftsmanship and timeless design. Step inside to light-filled living zones that frame the water outlook, opening out to a home that is both welcoming and practical. The kitchen and dining spaces flow effortlessly for everyday living, while the bedrooms are generously sized to accommodate growing families or visiting guests. Located just moments from Bellerive's vibrant village shops, cafés and services, and only a short stroll to the beach, this property blends lifestyle and convenience like no other. Add in easy access to schools, sporting facilities and Hobart's CBD just across the river, and you have a home that ticks every box. Whether you're looking to upsize, secure a forever home, or invest in one of Hobart's blue-chip suburbs, this Bellerive gem is a rare find – combining spectacular views, solid construction and a lifestyle second to none. Don't miss this opportunity – your Bellerive dream awaits.

- Solid, well-built family home with panoramic Derwent River outlook
- Flexible floorplan: 3–4 bedrooms – ideal for families, or home office
- Spacious light-filled living zones designed to capture the views
- Energy efficient home – solar panels & solar hot water system
- Close to Bellerive Village shops, cafés, schools and services
- Just minutes to Bellerive Beach, parks and sporting facilities
- 686m², private, internal allotment, 200m²+ Home
- Quick, easy 8 minute commute to Hobart CBD
- Double garage with secure parking + storage

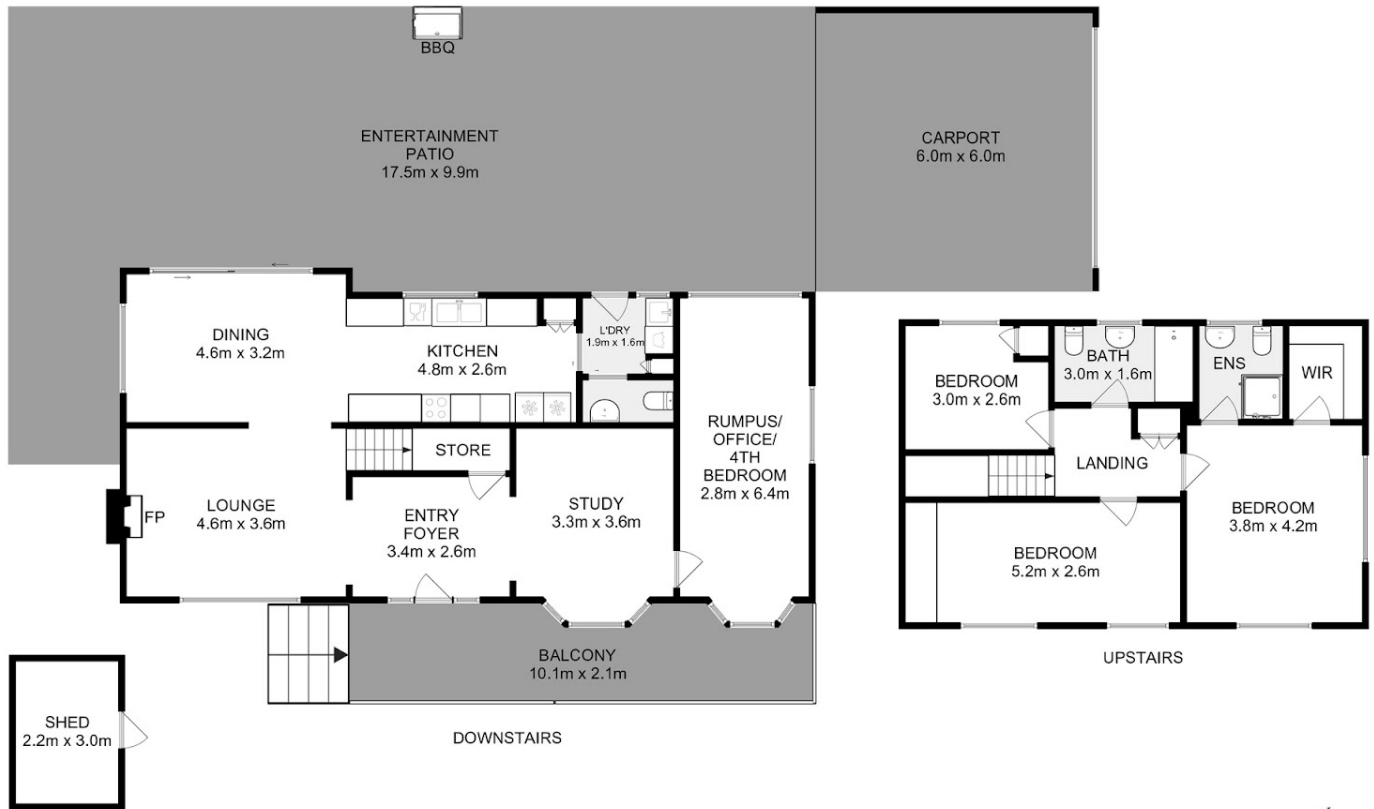
3 BED | 2 BATH | 2 CAR

PRICE:
\$960,000

OPEN FOR INSPECTION:
N/A



Ben Palmer
0417556731
benpalmer@atrealty.com.au
hobarthomes.com.au



Total Approx. Floor Area : 180 sqm
Total Approx. Outbuilding Area : 7 sqm

All measurements are internal and approximate.
This plan is a sketch for illustration, not valuation.
Produced by Open²view.com



Disclaimer: Please note this floor plan is for marketing purposes and is to be used as a guide only. All dimensions are estimates only and may not be exact measurements.