



# SOLD

## CONTEMPORARY ELEGANCE WITH A RELAXED COASTAL FEEL.

2019 Coast Homes Built Stylish Family Home.

Positioned on the border of City Beach, nestled in the leafy suburb of Wembley Downs, this beautifully presented home combines relaxed coastal living with refined modern comfort. Light-filled interiors and a seamless indoor-outdoor flow create an inviting atmosphere perfect for families and entertainers alike.

The open-plan kitchen, dining, and living area forms the heart of the home, featuring timber flooring, a stone feature fireplace, and large sliding glass doors that frame the lush, tree-lined garden. The contemporary kitchen offers a spacious island bench, quality appliances, and plenty of storage (including large walk-in pantry), making everyday living a breeze.

Step outside to enjoy the tranquil, private backyard surrounded by greenery — a true reflection of the suburb's leafy charm and proximity to nature.

The master suite is a serene retreat, complete with soft neutral tones, raking ceiling, fitted out walk-in-robe, and a calming outlook. Perfectly placed for family life, this home sits within walking distance of Kapinara Primary School and is within the Churchlands Senior High School catchment.

Everyday essentials are close at hand during the working week, with Floreat Forum, Empire Village, Innaloo and Karrinyup Shopping Precincts nearby. Then spend your weekends on the golf course, at Wembley Downs Tennis Club, the beach or wandering Reabold Hill.

Positioned moments from Perth's pristine coastline and local parks, this home offers the perfect balance of coastal ease and suburban convenience.

A stylish, 2019 Coast Homes built residence, designed by Kensington Designs and set within one of Wembley Downs' most desirable pockets — this is where modern living meets natural beauty.

Features include:

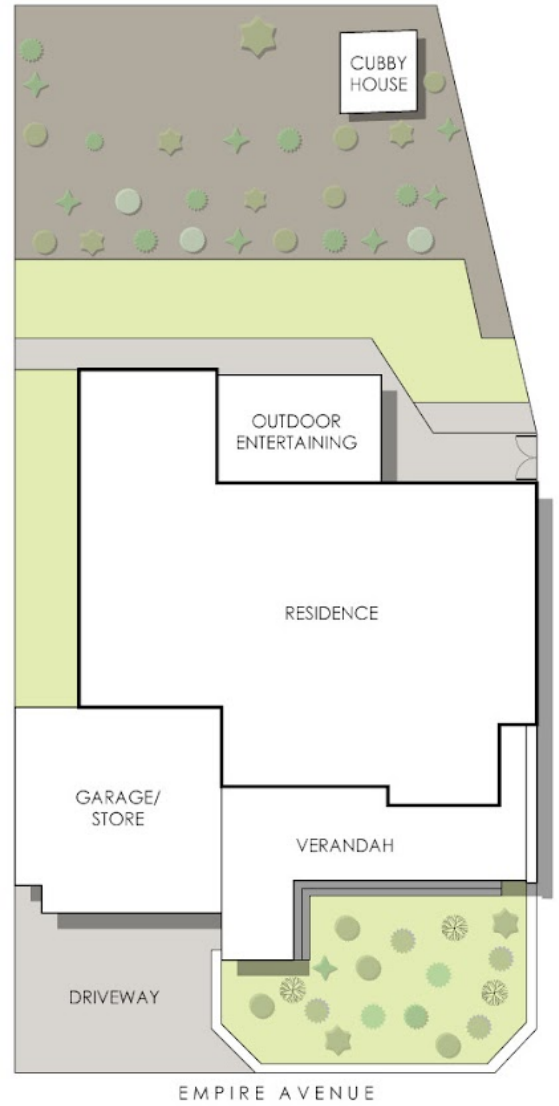
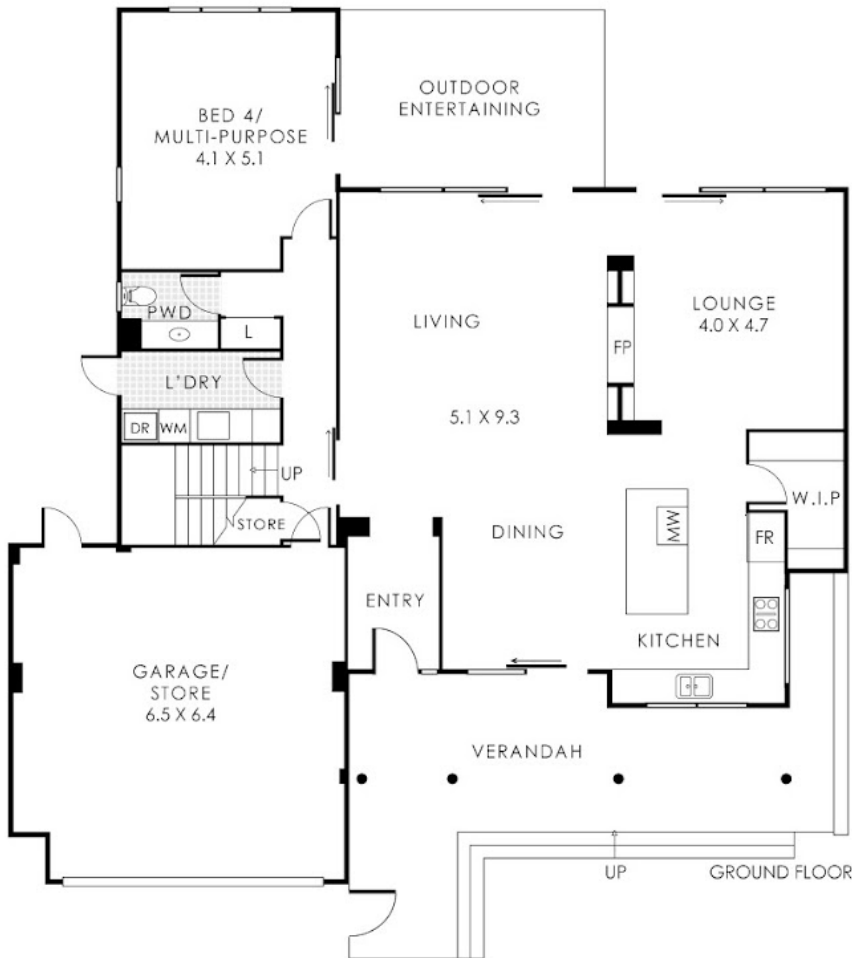
4 BED | 2 BATH | 2 CAR

PRICE:  
\$2,380,000

OPEN FOR INSPECTION:  
N/A



**Roy Landless**  
**0466256444**  
roy.landless@atrealty.com.au  
[www.atrealty.com.au](http://www.atrealty.com.au)



Disclaimer: Please note this floor plan is for marketing purposes and is to be used as a guide only. All dimensions are estimates only and may not be exact measurements.

Residence 260m<sup>2</sup> | Store 5m<sup>2</sup> | Garage 38m<sup>2</sup> | Verandah 17m<sup>2</sup>  
**Total Area 320m<sup>2</sup> | Total Block Size 536m<sup>2</sup>**

**Roy Landless**  
**0466256444**  
 roy.landless@atrealty.com.au  
[www.atrealty.com.au](http://www.atrealty.com.au)

This floorplan is for illustration purposes only to show the layout of the property. Whilst every effort has been made to ensure the accuracy of this floor plan, all measurements and any other details shown are an approximate interpretation only. Measurements are not guaranteed and will not account for wall thickness or roof area under eaves. City2be Real Estate Pty Ltd is not responsible for any error, omission, misrepresentation or any other information shown on this floor plan. Not to be used for any other purpose.  
[www.city2bereactive.com.au](http://www.city2bereactive.com.au)