



FOR SALE

AS NEW! - FULLY RENOVATED LIGHT & BRIGHT FAMILY HOME

Lifestyle, Location & low maintenance living are all on offer here.

As soon as you enter the home, you'll be impressed by the 3 meter high ceilings, VJ walls, natural light, neutral colour scheme & timber flooring. The open plan kitchen, dining & living areas flow seamlessly to the front entertaining balcony. Adjoining the kitchen is the fabulous butler's pantry & laundry space featuring plenty of storage & bench space. The home will appeal to professional couples, investors & families

This completely renovated home offers:

- 4 bedrooms – Master with modern ensuite & glass framed shower plus built-ins
- Generous 2nd & 3rd bedrooms & the 4th bedroom would also perfectly suit as a home office as it also has separate access from the front balcony
- 2 new modern bathrooms with glass shower frames . Family bathroom with bath
- New kitchen with stone bench tops, European appliances & induction cooktop, double sinks & dishwasher.
- Open plan living & dining which flows to front entertaining verandah
- Loads of room to entertain on the front verandah & watch the world go by.
- Split system A/C ensuring year-round comfort plus fans
- Timber like flooring creating warmth and character
- Parking for 3 to 4 cars -perfect to accommodate the trailer or boat
- Low maintenance gardens
- Loads of under home storage or multi purpose area to store the bikes etc

This home enjoys excellent access to transport, schools and shopping, making everyday life easy & convenient. Nundah station is only 250 meters away & the bus stop is just around the corner. Nundah Village is only 800 meters away & Nundah State School 900 meters

175 Melton Road has a Walk Score of 81 out of 100. This location is Very Walkable so most errands can be accomplished on foot. Nearby parks include Oxenham Park, Albert Bishop Park and Boyd Park.

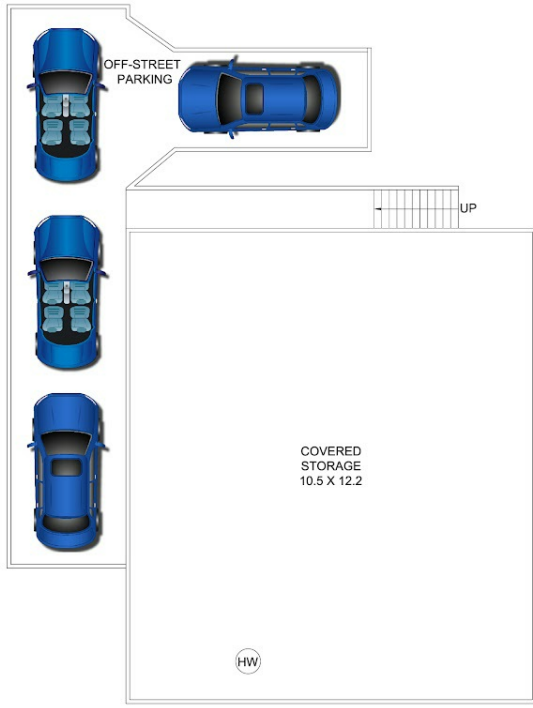
4 BED | 2 BATH | 3 CAR

PRICE:
BY NEG

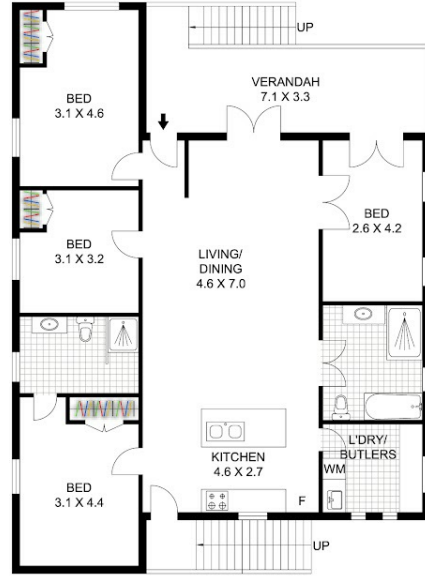
OPEN FOR INSPECTION:
May 23 at 12:00pm - 12:30pm
May 24 at 10:30am - 11:00am



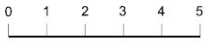
Prue Greenwood
0411424797
pruegreenwood@atrealty.com.au
www.atrealty.com.au



LOWER LEVEL



UPPER LEVEL



Scale in metres, indicative only. Dimensions are approximate. All information contained herein is gathered from sources we believe to be reliable. However, we cannot guarantee its accuracy and interested parties should rely on their own enquiries. www.skylinemedia.com.au

Residence	- 116.7 m ²
Ext.	- 34.6 m ²
Covered Storage	- 128.1 m ²
Off-Street Parking	- 60.5 m ²
Total	- 339.9 m ²



175 Melton Road, Nundah

Disclaimer: Please note this floor plan is for marketing purposes and is to be used as a guide only. All dimensions are estimates only and may not be exact measurements.